

# WARTSILA 12V200 ENGINES & ANCILLARIES



Less Than  
**5600**  
hours

## Standard Features:

- \* Rating 2200 kW<sub>e</sub>
- \* Auto start control
- \* Air start compressor
- \* Sound attenuating container
- \* Cooling radiator
- \* Power command generator set control panel
- \* Day tank
- \* Three - Yorkshire SF6 switchgear
- \* Three - fault earth limiter resistor
- \* Three - 200 kVA oil cooled transformer 11 kv / 415 kv
- \* Three - 9 MVA, 11 kV series reactors
- \* Full service history and manuals

## Wartsila/Cummins 2.2 MW Diesel Generator Set

Originally installed in 2000 by Wartsila for the Yorkshire utility in the United Kingdom to operate as a peak shaving plant. The utility sold the assets to Eon Co-Generation, a German company, where the units remained available for dispatch until 2004. The plant was sold in 2005 and was dismantled, stored, and maintained by First Energy, an experienced engine service company in the United Kingdom.

Wartsila is considered one of the top brands of reciprocal engines, with over 100 years of producing reliable, durable, and efficient engines. Wartsila engines are supported by a worldwide network of parts and service operations. Wartsila France has provided estimates for the refurbishment and warranty if the buyer of these engines desires to have such work done.

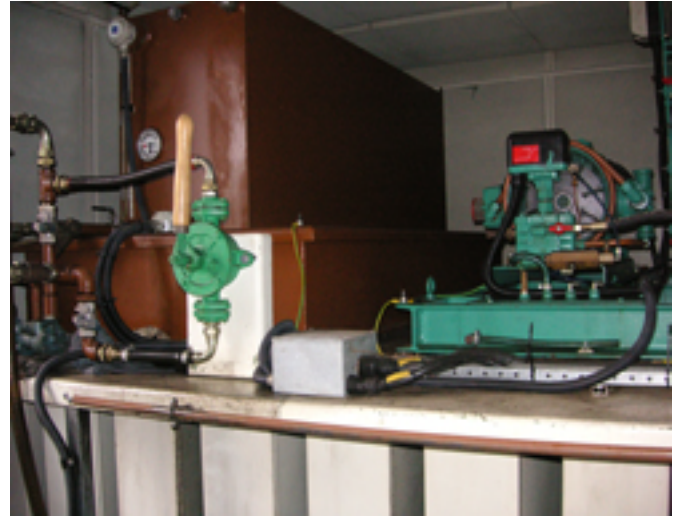
This 20 MW plant can be sold in its entirety, separated out into three 6.6 MW power plants, or can be separated out into 2.2 MW segments.

---

# WARTSILA 12V200 ENGINES & ANCILLARIES

## Generator Sets

Manufacturer . . . . . Wartsila  
Model . . . . . 12V200  
Rating . . . . . 2200 kWe Prime Power  
RPM . . . . . 1500 rpm  
Phase . . . . . 3 Phase  
A/C Voltage . . . . . 11 kV  
Fuel . . . . . Diesel  
Frequency . . . . . 50 hz



## Engine

Wartsila 12V200  
12 cylinder turbo charged diesel engine  
Napier turbo Type MA295  
1500 rpm with Autostart Control  
Air Start cooling and exhaust  
Cooling water distribution system  
Day tanks and fuel systems



## Alternator

Newage AVK 2300 DQZ-M  
2732 kVA  
1500 rpm  
11 kV  
50 hz with Cummins  
Power synchronization gear

## Transformer

Babcock 200 kVA - Main  
Oil Cooled  
11kV - 415 V  
Brush  
9 MVA  
11 kV Series Reactors

## Switch/Control Panel

Yorkshire  
HT Switch Panel  
11 kV  
3 breakers  
Main grid connection