


COMPOSITE OUTLINE FOR **ASCO** 300 1000-1200 AMPERE TRANSFER SWITCHES

GENERAL NOTES

- TYPE 1 ENCLOSURE. FREE STANDING. FLOOR MOUNTED. 12 GAUGE FORMED FRAME CONSTRUCTION.
- NEC STANDARD GAUGE PAN TYPE DOOR WITH LOCKABLE HANDLE.
- FINISH: ASA 61 GRAY, POLYESTER POWDER. UL RECOGNIZED.
- CONSTRUCTION IS IN ACCORDANCE WITH APPLICABLE REQUIREMENTS OF UL 891.
- RECOMMENDED CLEARANCES:
FRONT: 36 INCHES
- A 20% RATED GROUND BUS PROVIDED
- UNIT IS DESIGNED FOR COMBINATION TOP AND BOTTOM CABLE ENTRY. THE SWITCH CONFIGURATION IS FOR TOP ENTRY EMERGENCY & LOAD AND BOTTOM ENTRY NORMAL.

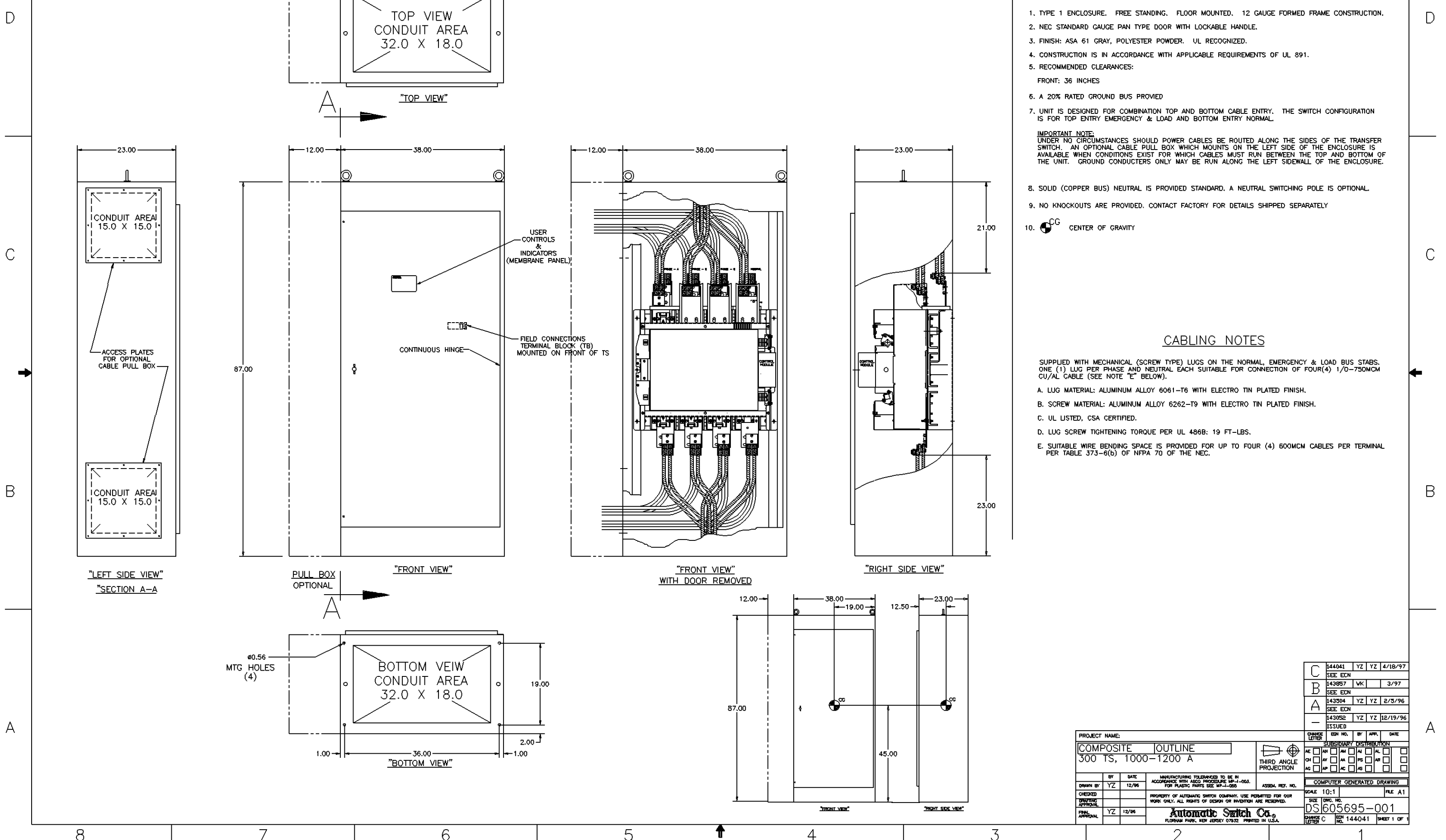
IMPORTANT NOTE:
UNDER NO CIRCUMSTANCES SHOULD POWER CABLES BE ROUTED ALONG THE SIDES OF THE TRANSFER SWITCH. AN OPTIONAL CABLE PULL BOX WHICH MOUNTS ON THE LEFT SIDE OF THE ENCLOSURE IS AVAILABLE WHEN CONDITIONS EXIST FOR WHICH CABLES MUST RUN BETWEEN THE TOP AND BOTTOM OF THE UNIT. GROUND CONDUCTORS ONLY MAY BE RUN ALONG THE LEFT SIDEWALL OF THE ENCLOSURE.

- SOLID (COPPER BUS) NEUTRAL IS PROVIDED STANDARD. A NEUTRAL SWITCHING POLE IS OPTIONAL.
- NO KNOCKOUTS ARE PROVIDED. CONTACT FACTORY FOR DETAILS SHIPPED SEPARATELY
-  CENTER OF GRAVITY

CABLING NOTES

SUPPLIED WITH MECHANICAL (SCREW TYPE) LUGS ON THE NORMAL, EMERGENCY & LOAD BUS STABS. ONE (1) LUG PER PHASE AND NEUTRAL EACH SUITABLE FOR CONNECTION OF FOUR(4) 1/0-750MCM CU/AL CABLE (SEE NOTE "E" BELOW).

- LUG MATERIAL: ALUMINUM ALLOY 6061-T6 WITH ELECTRO TIN PLATED FINISH.
- SCREW MATERIAL: ALUMINUM ALLOY 6262-T9 WITH ELECTRO TIN PLATED FINISH.
- UL LISTED, CSA CERTIFIED.
- LUG SCREW TIGHTENING TORQUE PER UL 486B: 19 FT-LBS.
- SUITABLE WIRE BENDING SPACE IS PROVIDED FOR UP TO FOUR (4) 600MCM CABLES PER TERMINAL PER TABLE 373-6(b) OF NFPA 70 OF THE NEC.



C	144041	YZ	YZ	4/18/97
	SEE ECN			
B	143857	WK		3/97
	SEE ECN			
A	143504	YZ	YZ	2/3/96
	SEE ECN			
-	143052	YZ	YZ	12/19/96
	ISSUED			

PROJECT NAME:				CHANGE LETTER	EDN NO.	BY	APP.	DATE
COMPOSITE OUTLINE								
300 TS, 1000-1200 A								
THIRD ANGLE PROJECTION				SUBSIDIARY DISTRIBUTION				
AE	AM	AN	AO	AP	AR	AS	AT	AV
CH	CI	CM	CP	CR	CS	CT	CU	CV
AG	AP	AC	AS	AT	AV	AW	AX	AY
DRAWN BY: YZ				DATE: 12/96				ASSEM. REF. NO.
CHECKED:				MANUFACTURING TOLERANCES TO BE IN ACCORDANCE WITH AS20 PROCEDURE MP-J-003. FOR PLASTIC PARTS SEE MP-J-005.				SCALE: 10:1
PRINTING APPROVAL:				PROPERTY OF AUTOMATIC SWITCH COMPANY. USE PERMITTED FOR OUR WORK ONLY. ALL RIGHTS OF DESIGN OR INVENTION ARE RESERVED.				FILE A1
FINAL APPROVAL: YZ				DATE: 12/96				SIZE: DWG. NO.
				Automatic Switch Co.				DS 605695-001
				FLORHAM PARK, NEW JERSEY 07832 PRINTED IN U.S.A.				CHANGE LETTER C
								EDN NO. 144041
								SHEET 1 OF 1