

Operator's Manual Supplement

ASCO® 7000 Series Automatic Closed-Transition Soft-Load Transfer Switches 260 through 4000 amps



400 amp. size

NOTES

- Refer to the outline and wiring drawings provided with your 7000 Series ATS for all installation and connection details and accessories.
- Refer to the *Operator's Manual* provided with your 7000 Series ATS for all installation and connection details.
- Refer to the *Group 5 Controller User's Guide* 381333-126 for ATS status display messages, time delays, pickup & dropout settings, and adjustments.

Description

A 7000 Series Automatic Closed-Transition Soft Load Transfer Switch provides seamless load transfer between power sources. This accessory can keep the two sources connected for an extended duration or transfer from one source to the other without any disruption to the load. The entire power interaction takes place with minimal voltage or frequency transients. In addition, soft-load transfer operation or maintained-parallel operation can occur when a utility demand setpoint is exceeded. Also, the load can be transferred or disconnected from the generator when the total (utility plus generator) demand falls below a dropout setpoint for a preset time. These operations are accomplished in conjunction with software-derived protective relaying. The Soft Load Controller (SLC) collects real-time information from the two Power Manager Xps and the Group 5 Controller to control operation. The protective relaying functions and settings in the Power Manager Xps are programmed through the Soft Load Controller's touch screen. These critical settings are password protected to prevent changes by unauthorized individuals.



DANGER

DANGER is used in this manual to warn of high voltages capable of causing shock, burns, or death.



WARNING

WARNING is used in this manual to warn of possible personal injury.

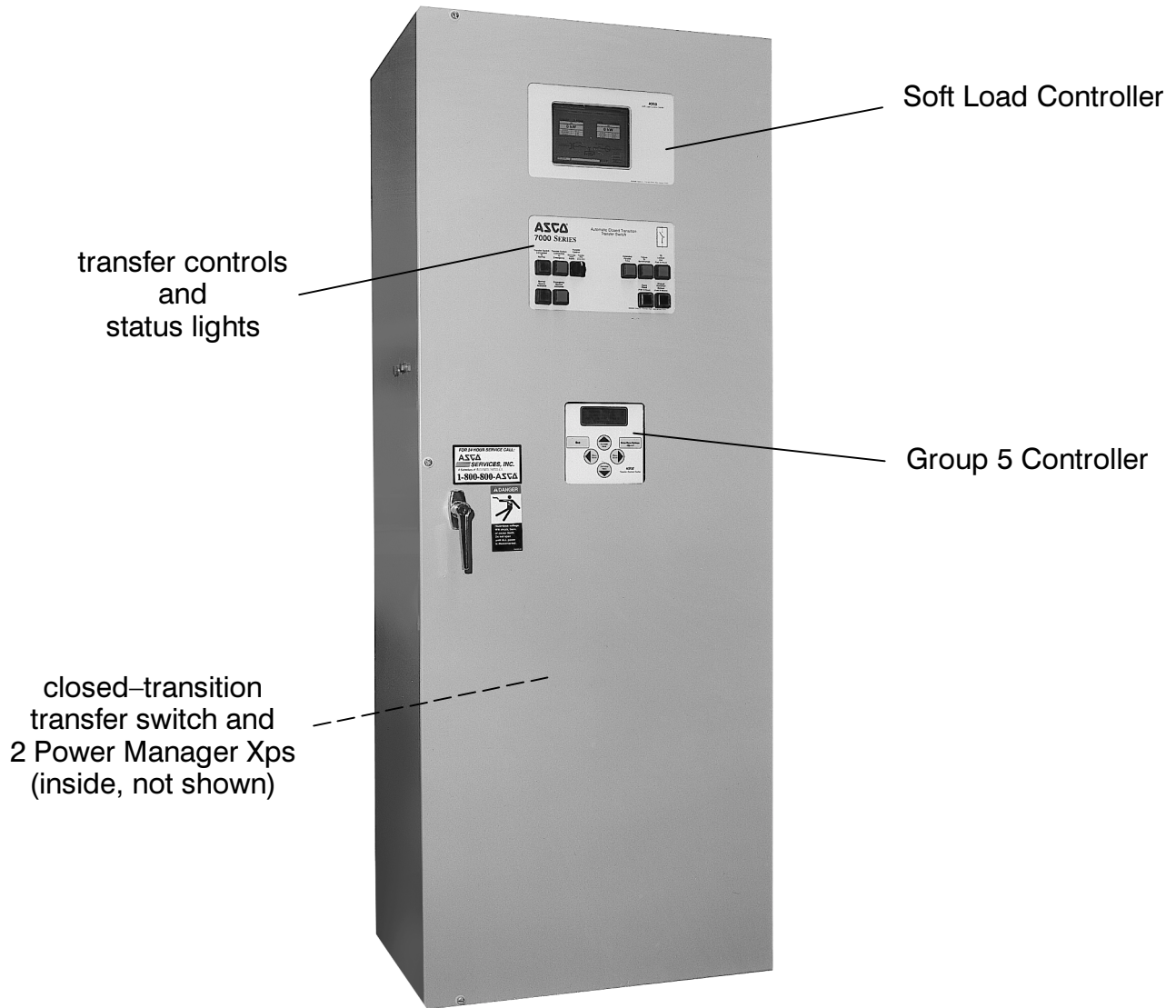


CAUTION

CAUTION is used in this manual to warn of possible equipment damage.

TABLE OF CONTENTS

	page
Rating Label and Major Components	1
Indicators Lights and Transfer Controls	2
Data Summary and Information Screens	3



400 amp size 7000 Series 7ASLS in Type 1 enclosure

Rating Label

Each Automatic Closed-Transition Soft-Load Transfer Switch contains a rating label to define the loads and fault circuit withstand/closing ratings. Refer to the label on the Transfer Switch for specific values.

WARNING

Do not exceed the values on the rating label. Exceeding the rating can cause personal injury or serious equipment damage.

Nameplate

The Transfer Switch nameplate includes data for each specific 7000 Series ATS. Use the switch only within the limits shown on this nameplate.

An experienced, licensed electrician must install the 7ASLS.

For soft-load and maintained-parallel operation the 7ASLS or 7ASLB must be configured to work with your specific engine-generator set. Otherwise, only the standard closed-transition operation functions.

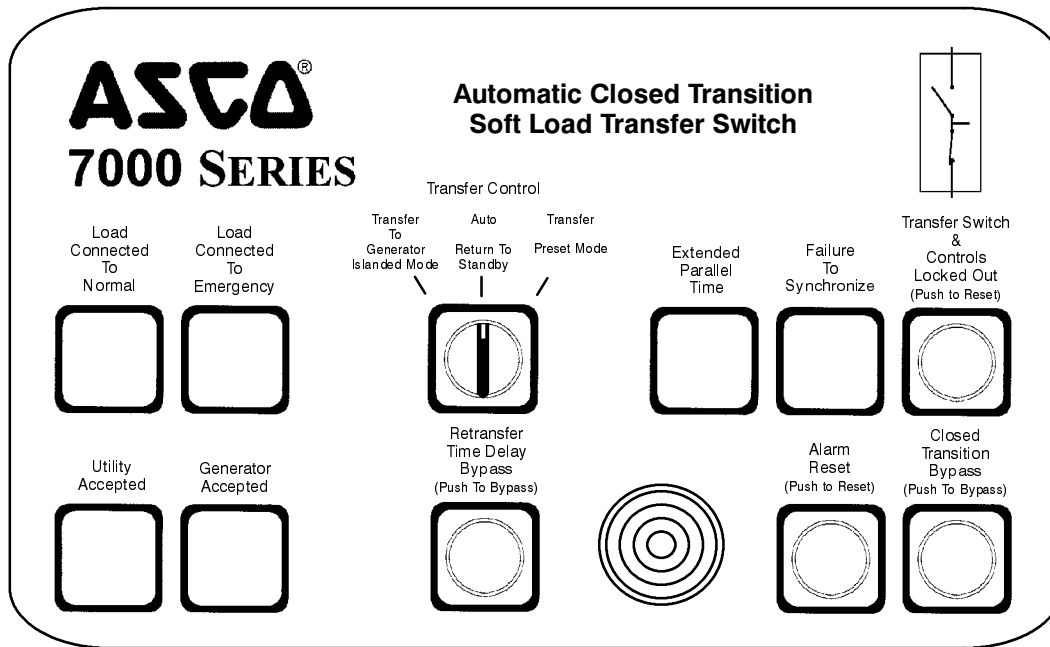


Figure 1. Standard transfer controls and indicators.

Indicator Lights

Seven door-mounted indicator lights show which source the load is connected to, which sources are available (acceptable), and three alarm conditions.

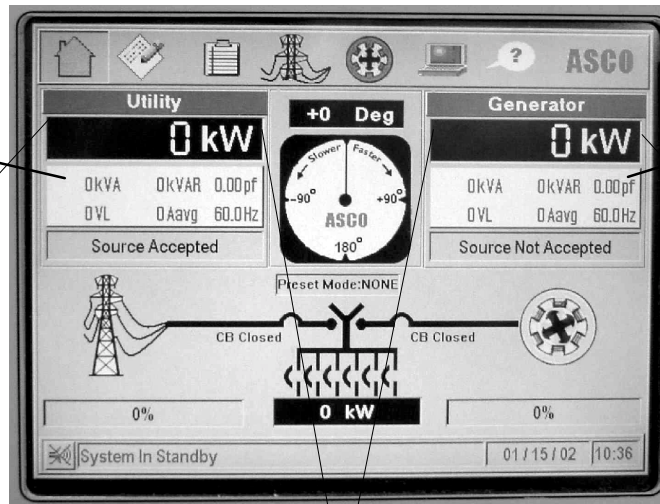
Indicator	Meaning
Load Connected To Normal	The load is connected to the normal source. The transfer switch main contacts are closed on the normal source.
Load Connected To Emergency	The load is connected to the emergency source. The transfer switch main contacts are closed on the emergency source.
Utility Accepted	The utility (normal source) voltage and frequency are acceptable. The Group 5 Controller constantly monitors the sources.
Generator Accepted	The generator (emergency source) voltage and frequency are acceptable. The Group 5 Controller constantly monitors the sources.
Extended Parallel Time	Transfer switch contacts are closed longer than preset time.
Failure to Synchronize	Conditions of normal or emergency sources not suitable for closed-transition transfer.
Transfer Switch & Controls Locked Out	Transfer lockout operation has taken place; transfer switch is disabled from automatic operation.

Transfer Controls

The door-mounted transfer control provides three transfer modes. Push button controls allow bypassing of standard settings (retransfer time delay, closed transition) and resetting alarms.

Control	Meaning
Transfer Control	<i>Transfer To Generator (Islanded Mode)</i> The load is soft-load transferred to the emergency source
	<i>Auto (Return To Standby)</i> The load is transferred to either the normal or the emergency sources.
	<i>Transfer (Preset Mode)</i> The load is soft-load transferred using the mode preset on the SLC (see the <i>Mode</i> setting on the <i>System Information</i> screen on the SLC)
Retransfer Time Delay Bypass (push button)	Push to override (cancel) the preset time delay to retransfer the load to the normal source.
Closed Transition Bypass (pushbutton)	Push for open-transition load transfer to the opposite source.
Transfer Switch & Controls Locked Out (push button)	Push to reset the transfer switch controls. Open both circuit breakers; call for service.
Alarm Reset (push button)	Push to silence the alarm horn and to reset the alarm condition; determine the problem.

Press left side to display the Utility Data Summary Screen.



Press right side to display the Generator Data Summary Screen.

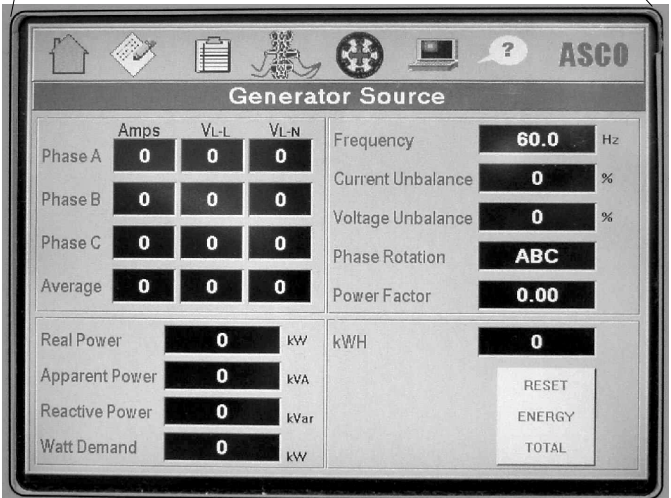
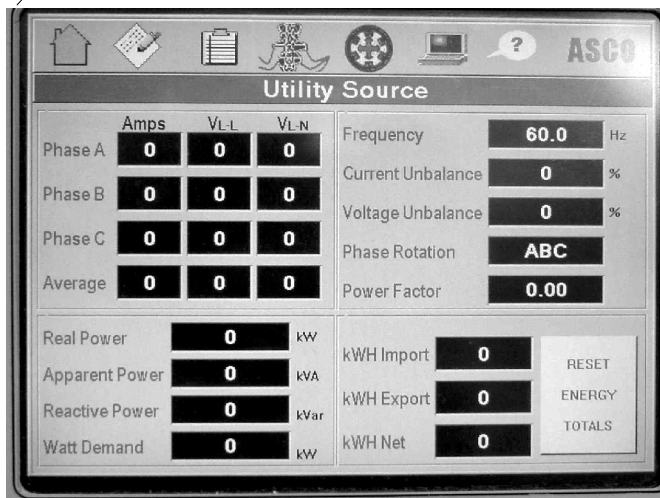
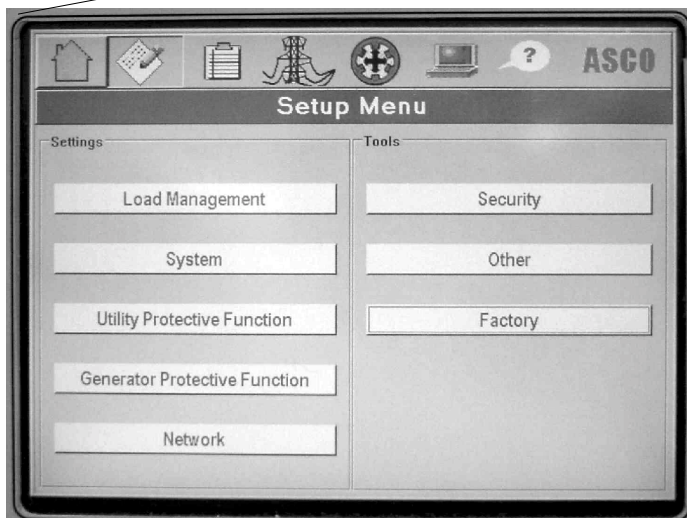


Figure 2. Soft Load Controller Data Summary screens.

Press the second button on the top button bar.



This screen displays the Setup Menu.

To change any configuration setting you must login with a user name and password.

Figure 3. Soft Load Controller System Setup Menu screen.