



# GeneratorJoe

4016 Quartz Drive  
Santa Rosa, CA 95405  
Phone: 707 539-9003  
Fax: 707 539-5212  
Email: sales@generatorjoe.NET  
Web www.generatorjoe.NET

## RESISTIVE LOAD BANK

500 AMPS

### MODEL K576



QUALITY SYSTEM CERTIFIED TO  
**ISO 9001**

- **Lightweight Construction**
- **Durable Load Elements**
- **Portable, with Lifting Handles**
- **52 Volt DC Operation**
- **Load Step Toggle Switches for Load Control**
- **No Cool Down Period**

**T**he Avtron Model K576 load bank is a lightweight, self-contained, portable unit that provides up to 500 amperes load at 52 volts DC.

This indoor unit comes with many convenient features that make it simple to use. These include a control panel located on the front of the load bank, easy access load connections, and casters for maximized mobility.

The K576 is built to last. Its load elements are engineered to operate at one half of their temperature rating to provide stable loading and for longer life. The load circuit is operated using fully rated load contactors actuated by switches on the control panel.

Control and blower power are derived from an external 120 volt, single phase, 60 hertz source. A reliable, heavy duty, industrial type motor drives the blower that provides the necessary cooling for the load elements.

Low weight, convenient operation, and made to last, are features that make the K576 the leading load bank choice in its class.

*The Model K576 is used for testing DC power sources including converters, transformer-rectifiers, battery systems, Uninterruptible Power Supplies (UPS), etc.*

*Avtron's extensive line of Load Bank and Industrial Resistor Products are solid performers used throughout the world.*

*For total technical support or additional information, please contact GeneratorJoe at (707) 539-9003 or sales@generatorjoe.net*

# K576 LOAD CAPACITY RATINGS

Total Load Amps	Volts DC	Load Steps in Amps
500	52	25, 25, 50, 100, 100,100, 100,
500	52	2.5, 5, 5, 12.5, 25, 50, 100, 100,100, 100,

## K576 SPECIFICATIONS

**CONSTRUCTION:** The load bank is contained in a rugged aluminized steel enclosure, with two rigid and two lockable swivel casters mounted at the corners, and four lifting handles provided for simplified handling.

**CONTROL POWER:** Control power is derived from an external 120 volt, single phase, 60 hertz power source. A line cord is included with the load bank for quick connection.

**BLOWER:** A heavy duty, reliable, industrial blower is used for cooling the resistive elements. This 1/4 horsepower device operates from the same 120 volt, single phase, 60 hertz, power source as the load bank control circuit.

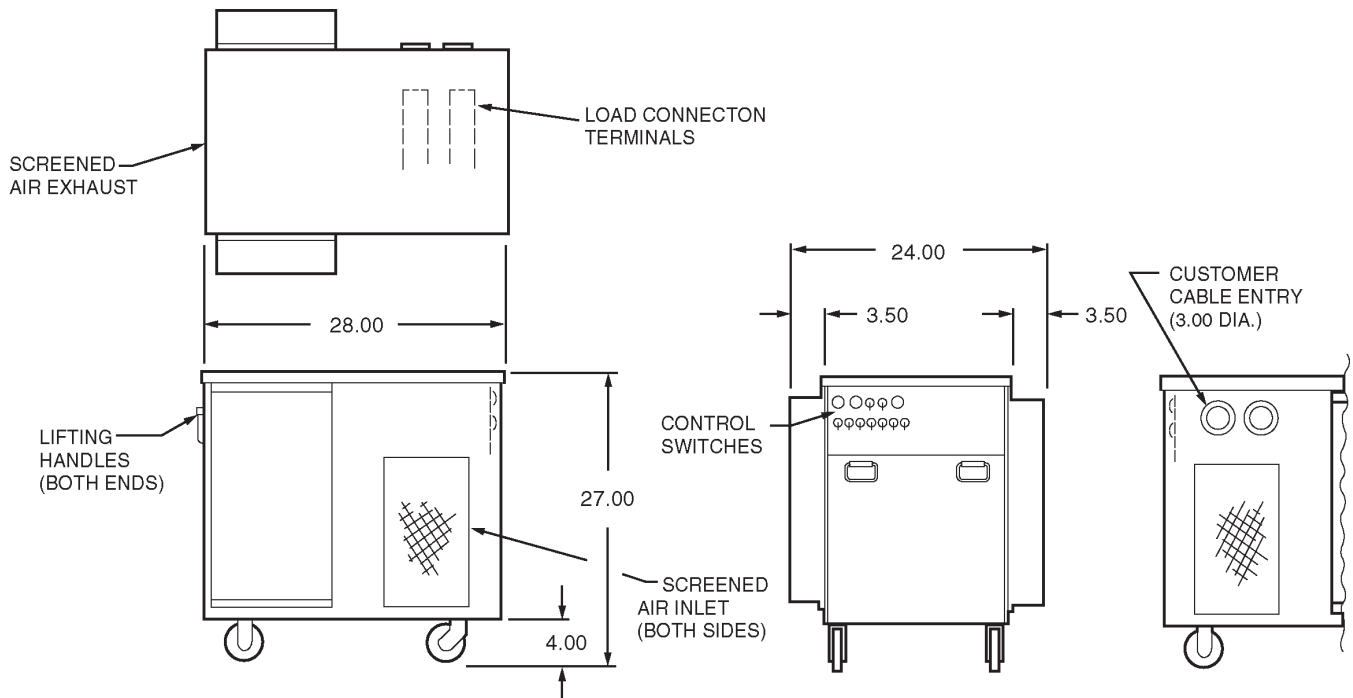
**RESISTIVE ELEMENTS:** Made of a chromium alloy, the resistive elements are specially wound and continuously

supported in the cooling air stream. They are designed to operate at one half of their rated temperature rating for more stable loading and longer life without the need for a cool down period.

**CONTROL PANEL:** Includes a POWER ON/OFF switch, a power status indicator light, an ON/OFF switch for each load step, a MASTER LOAD ON/OFF switch for applying or removing all selected load steps, and a BLOWER FAIL indicator light.

**PROTECTIVE FEATURES:** The control circuit is fuse protected and the load circuit is disabled by a differential pressure air switch if insufficient cooling air is detected.

**WEIGHT:** Approximately 160 pounds.



# GeneratorJoe



4016 Quartz Drive  
 Santa Rosa, CA 95405  
 Phone: 707 539-9003  
 Fax: 707 539-5212  
 Email: sales@generatorjoe.NET  
 Web www.generatorjoe.NET

All dimensions are in inches.  
 Specifications subject to change without notice.  
 Printed in U.S.A. Rev. B