

FOR INDIVIDUAL GEN-SET MODEL TYPES SEE BROADCROWN LITERATURE.

ENGINE TYPE: S4S
ALTERNATOR: BCI 184
(BCI 184 G ILLUSTRATED)

SHIPPING WEIGHT
(WITH OIL): 835Kg

WET WEIGHT
50/50 GLYCOL & FUEL: 925 Kg

OIL CAPACITY: 10 LITRES
COOLING CAPACITY: 9.5 LITRES
FUEL TANK CAPACITY: 95 LITRES

GENERATOR IS TO BE PLACED ON A FLAT FLOOR OR CONCRETE BASE

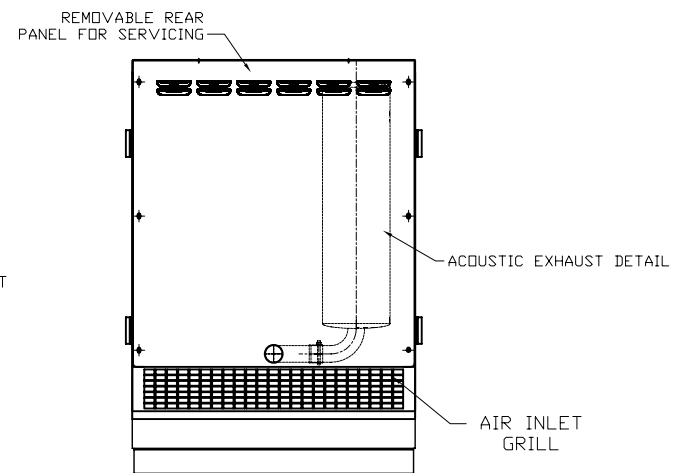
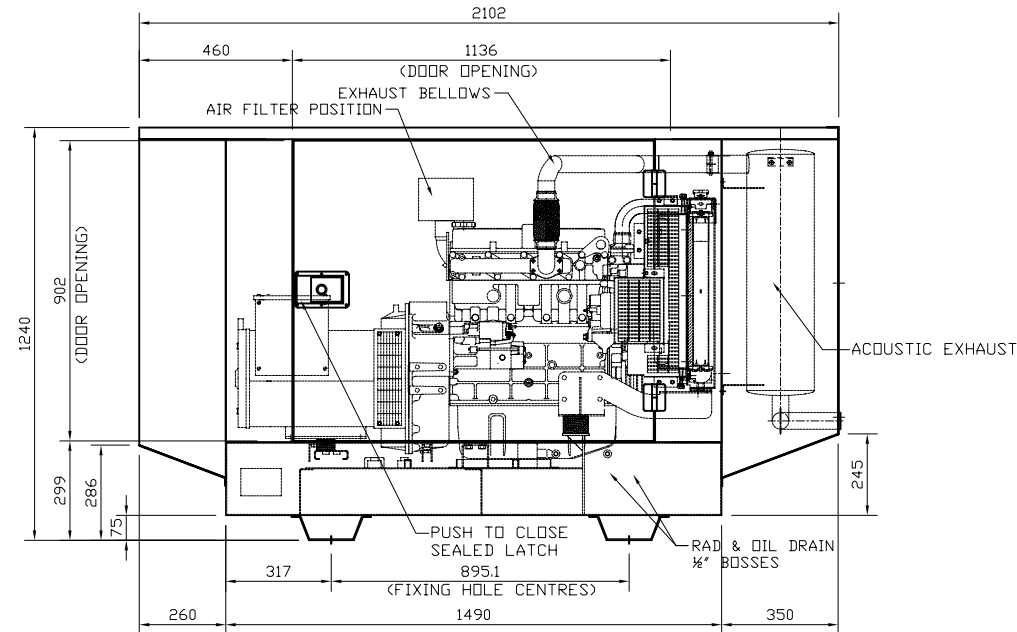
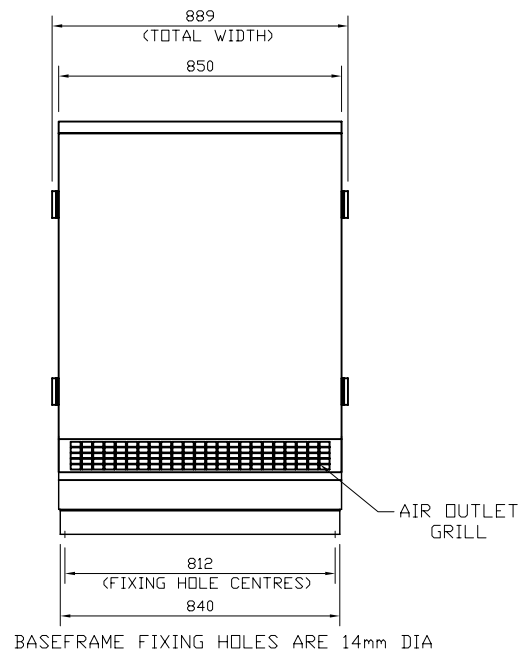
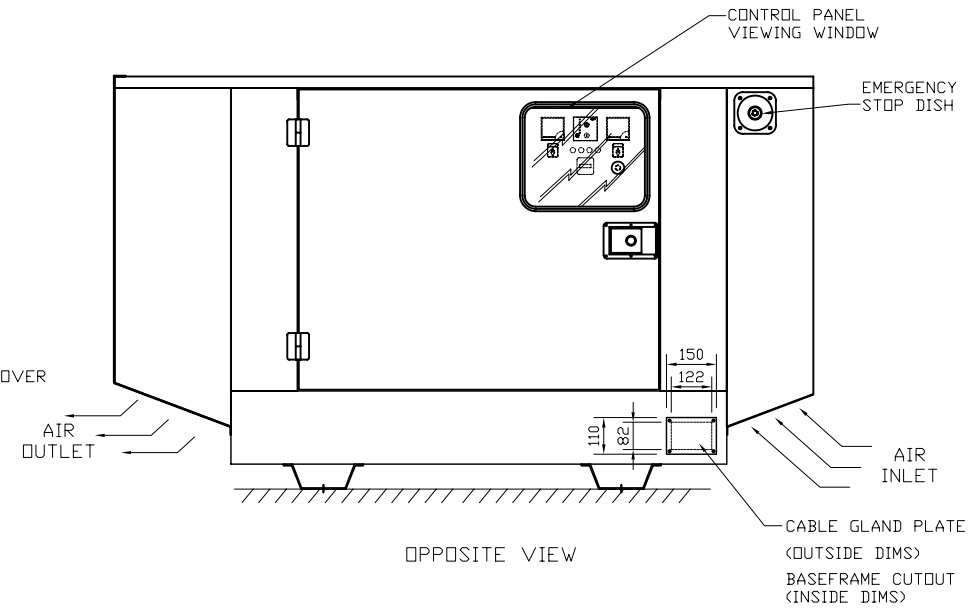
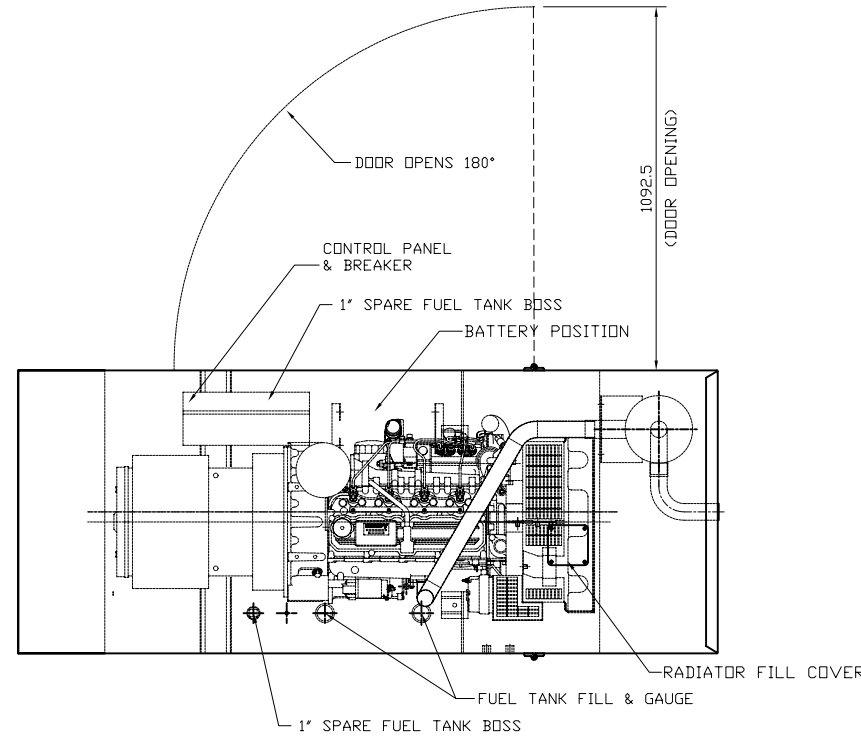
PLEASE NOTE WEIGHTS MAY VARY DEPENDING ON ALTERNATOR COMBINATION

THIS DRAWING IS OF A PROTOTYPE, THE DESIGN MAY VARY SLIGHTLY TO THE FINAL PRODUCTION UNIT.



GeneratorJoe

4016 Quartz Drive
Santa Rosa, CA 95405
Phone: 707 539-9003
Fax: 707 539-5212
Email: sales@generatorjoe.NET
Web www.generatorjoe.NET



ISS	ALTERATIONS	DATE

NOTES

TOLERANCES:
BETWEEN HOLE CENTRES & HOLE CENTRE TO EDGE (ON FLAT) ± 0.2

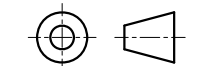
HOLE CENTRES TO BEND AND EDGES TO BEND ± 0.5

ACROSS EACH BEND ± 0.5

FABRICATION ± 1.0

HOLE DIAMETERS AND SLOT WIDTHS +0.1, -0.0

ANGULAR ± 0.5°



THIRD ANGLE PROJECTION
DO NOT SCALE, IF IN DOUBT ASK

DISTRIBUTION

MASTER	FABRICATOR
--------	------------

TITLE:	ACOUSTIC GENERAL ARRANGEMENT		
CLIENT:	N/A		
SITE:	N/A		
W.O. No.:	N/A	ENGINEER:	P.RUTTER
TYPE:	MITUBISHI	CHECKED:	
SCALE:	NTS	DATE:	

TOTAL No. OF SHEETS: 1
DRAWING NO. MGA004

ISSUE: A

BROADCROWN