

FOR INDIVIDUAL GEN-SET MODEL TYPES SEE BROADCAST LITERATURE.

ENGINE TYPE: 5030TF
ALTERNATOR: UCI 224
(UCI 224 C ILLUSTRATED)

USABLE FUEL CAPACITY: 115L

SHIPPING WEIGHT
(WITH OIL): 1005Kg - 1015Kg

WET WEIGHT
50/50 GLYCOL & FUEL: 1110Kg - 1120Kg

OIL CAPACITY: 8 LITRES
COOLING CAPACITY: 14.5 LITRES

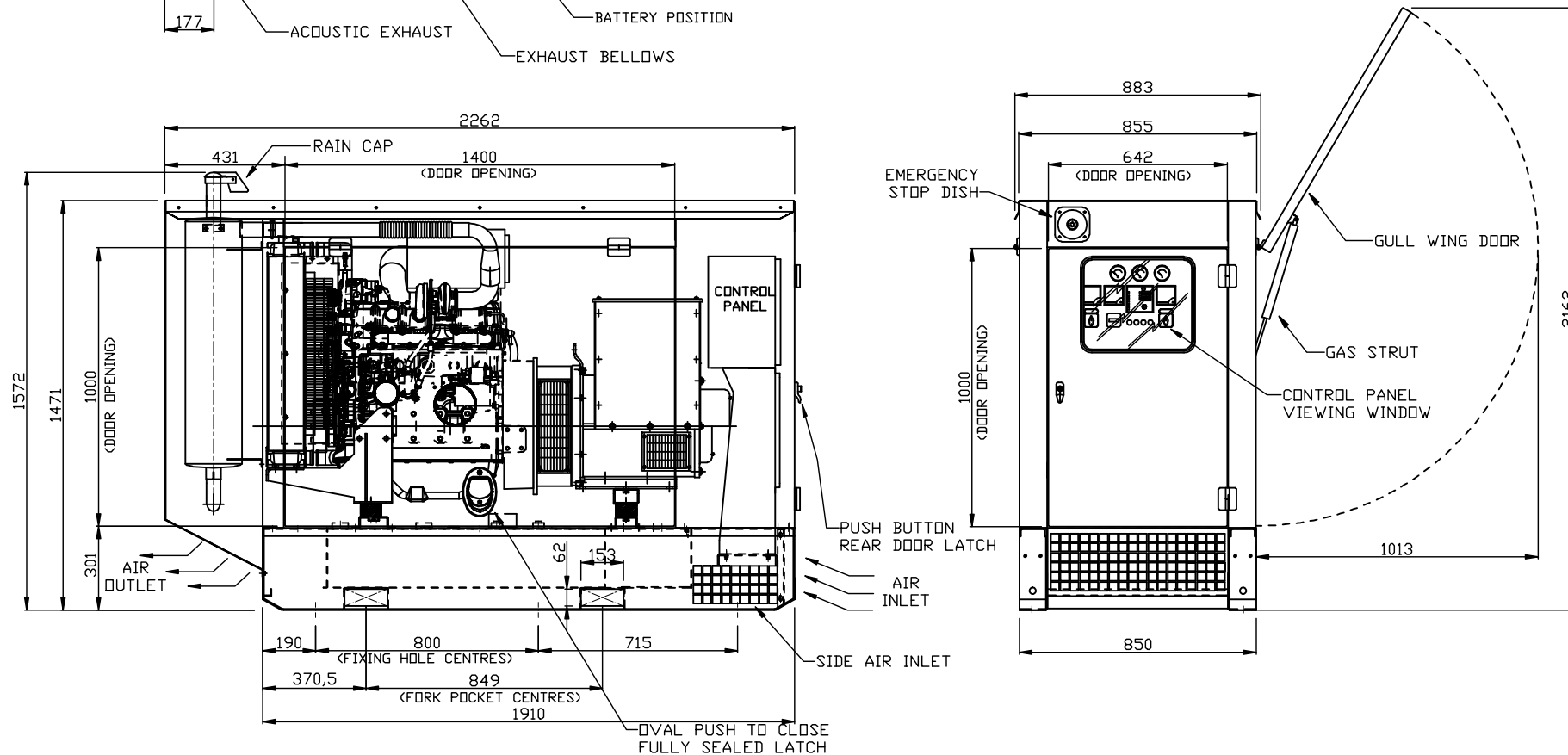
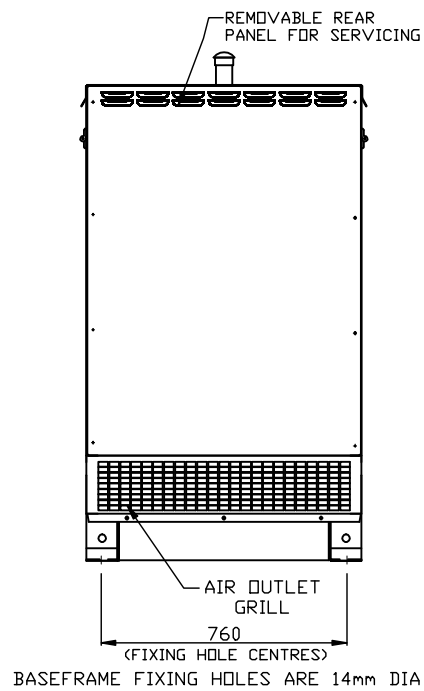
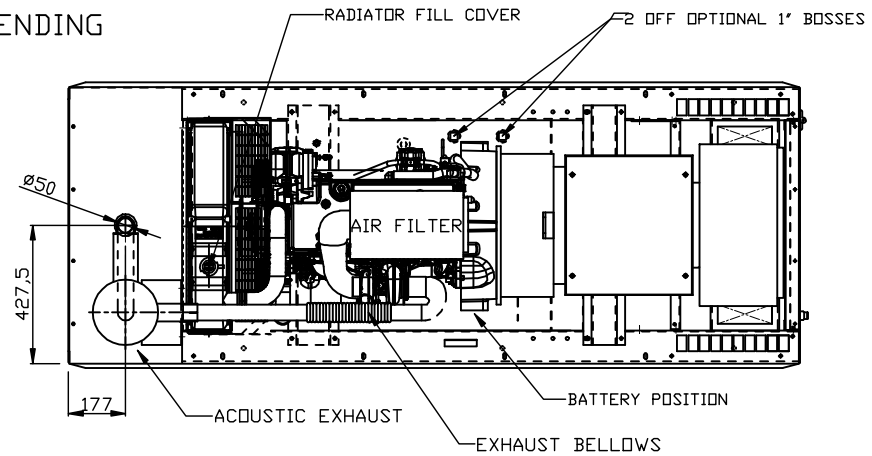
GENERATOR IS TO BE PLACED ON A FLAT FLOOR OR CONCRETE BASE

PLEASE NOTE WEIGHTS MAY VARY DEPENDING ON ALTERNATOR COMBINATION



GeneratorJoe

4016 Quartz Drive
Santa Rosa, CA 95405
Phone: 707 539-9003
Fax: 707 539-5212
Email: sales@generatorjoe.NET
Web www.generatorjoe.NET



ISS	ALTERATIONS	DATE
B	FUEL CAPACITY CORRECTED	19-11-07 LR

NOTES

TOLERANCES:
BETWEEN HOLE CENTRES & HOLE CENTRE TO EDGE (ON FLAT) ± 0.2

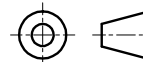
HOLE CENTRES TO BEND AND EDGES TO BEND ± 0.5

ACROSS EACH BEND ± 0.5

FABRICATION ± 1.0

HOLE DIAMETERS AND SLOT WIDTHS +0.1, -0.0

ANGULAR ± 0.5°



THIRD ANGLE PROJECTION
DO NOT SCALE, IF IN DOUBT ASK

DISTRIBUTION

MASTER	FABRICATOR
--------	------------

TITLE:	JD 5030TF ACOUSTIC CANOPY 1
CLIENT:	
SITE:	
W.O. No.:	ENGINEER: P.RUTTER
TYPE:	5030TF CHECKED:
SCALE:	1:20 DATE:

TOTAL No. OF SHEETS: 1

DRAWING NO.	JGA044	ISSUE	B
-------------	--------	-------	---

BROADCAST