

FOR INDIVIDUAL GEN-SET MODEL TYPES SEE BROADCROWN LITERATURE.

ENGINE TYPE: 6068HF  
ALTERNATOR: UCDI 274

USABLE FUEL CAPACITY: 275 LITRES

SHIPPING WEIGHT  
(WITH OIL): 1485-1530 Kg's

WET WEIGHT  
50/50 GLYCOL & FUEL: 1766-1811 Kg's

OIL CAPACITY: 19 LITRES  
COOLING CAPACITY: 26.0 LITRES

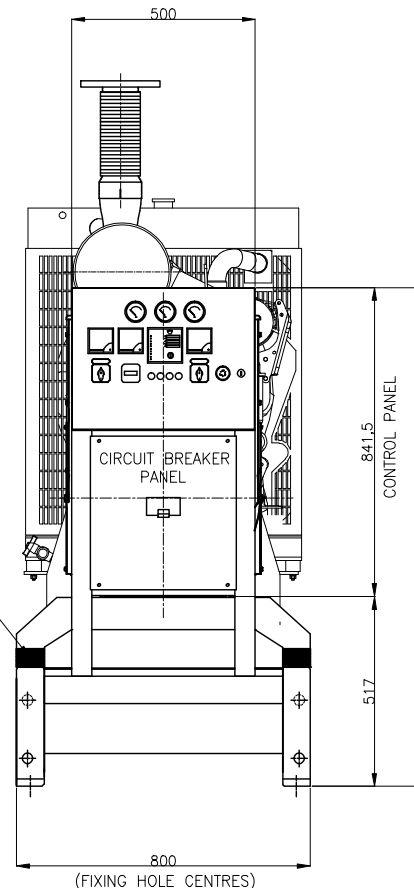
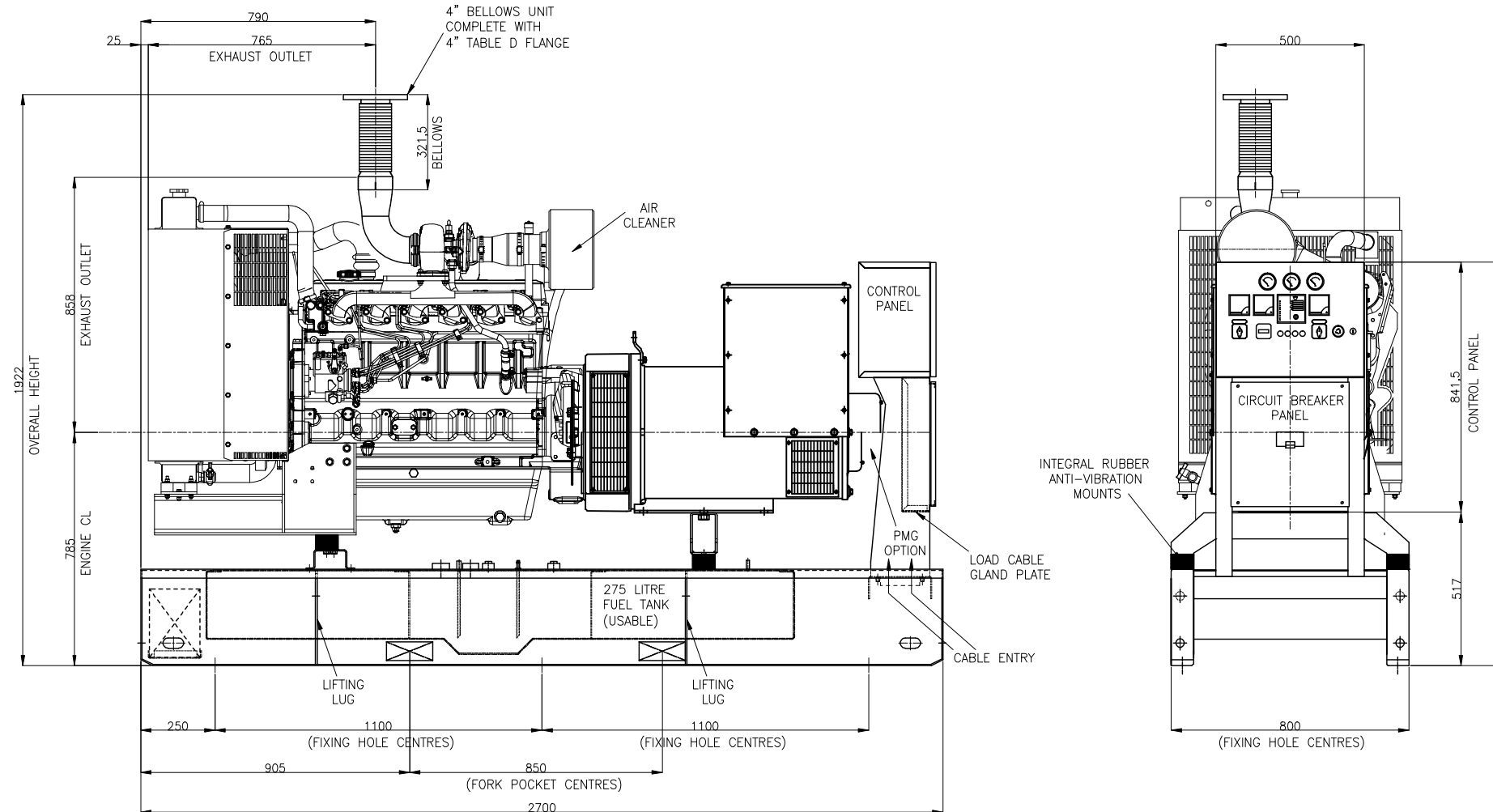
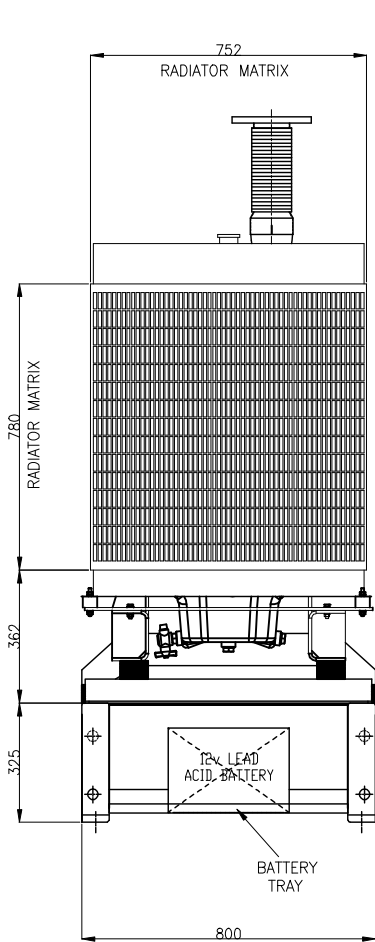
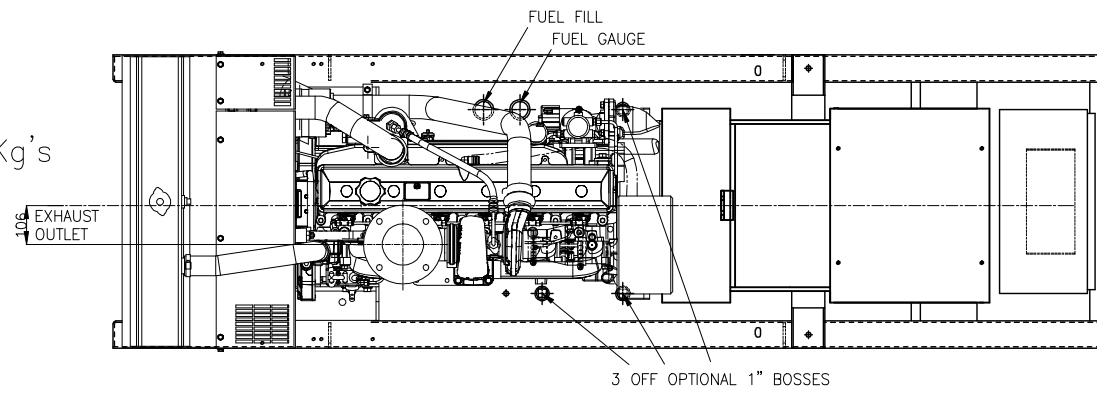
GENERATOR IS TO BE PLACED ON A FLAT FLOOR OR CONCRETE BASE

PLEASE NOTE WEIGHTS MAY VARY DEPENDING ON ALTERNATOR COMBINATION



**GeneratorJoe**

4016 Quartz Drive  
Santa Rosa, CA 95405  
Phone: 707 539-9003  
Fax: 707 539-5212  
Email: sales@generatorjoe.NET  
Web www.generatorjoe.NET



| ISS | ALTERATIONS   | DATE            |
|-----|---|-----------------|
| B   | EXHAUST OUTLET DETAIL AND POSITION CHANGED. CABLE ENTRY DETAIL ADDED. | 05-10-07<br>P.R |

**NOTES**

**TOLERANCES:**  
BETWEEN HOLE CENTRES & HOLE CENTRE TO EDGE (ON FLAT)  $\pm 0.2$

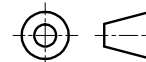
HOLE CENTRES TO BEND AND EDGES TO BEND  $\pm 0.5$

ACROSS EACH BEND  $\pm 0.5$

FABRICATION  $\pm 1.0$

HOLE DIAMETERS AND SLOT WIDTHS  $+0.1, -0.0$

ANGULAR  $\pm 0.5^\circ$



THIRD ANGLE PROJECTION  
DO NOT SCALE, IF IN DOUBT ASK

**DISTRIBUTION**

|        |            |
|--------|------------|
| MASTER | FABRICATOR |
|--------|------------|

|                  |                        |              |  |
|------------------|------------------------|--------------|--|
| <b>TITLE:</b>    | OPEN FRAME 4-6068HF GA |              |  |
| <b>CLIENT:</b>   |                        |              |  |
| <b>SITE:</b>     |                        |              |  |
| <b>W.O. No.:</b> | <b>ENGINEER:</b>       | P.RUTTER     |  |
| <b>TYPE:</b>     | <b>CHECKED:</b>        |              |  |
| <b>SCALE:</b>    | 1:20                   | <b>DATE:</b> |  |

TOTAL No. OF SHEETS: 1

|                    |        |                 |   |
|--------------------|--------|-----------------|---|
| <b>DRAWING NO.</b> | JGA034 | <b>REVISION</b> | B |
|--------------------|--------|-----------------|---|

**BROADCROWN**