

FOR INDIVIDUAL GEN-SET MODEL TYPES SEE BROADCASTCROWN LITERATURE.

ENGINE TYPE: 4024TF
ALTERNATOR: UCDI 184
(BCI 184 F ILLUSTRATED)

SHIPPING WEIGHT
(WITH OIL): 753-792Kg

WET WEIGHT
50/50 GLYCOL & FUEL: 858-897Kg

OIL CAPACITY: 6 LITRES
COOLING CAPACITY: 14.5 LITRES
FUEL TANK CAPACITY: 95 LITRES

GENERATOR IS TO BE PLACED ON A FLAT FLOOR OR CONCRETE BASE

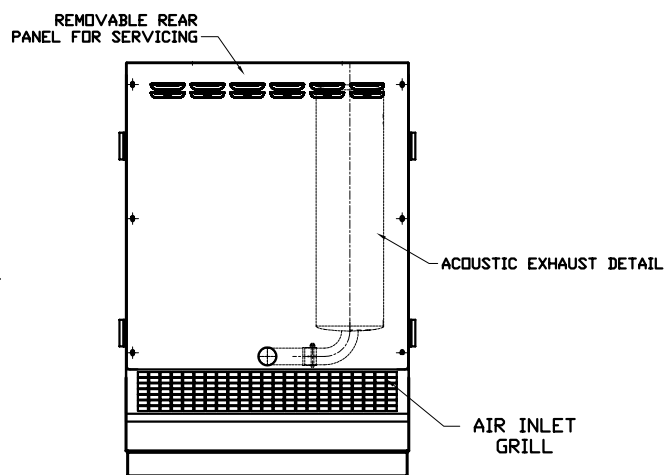
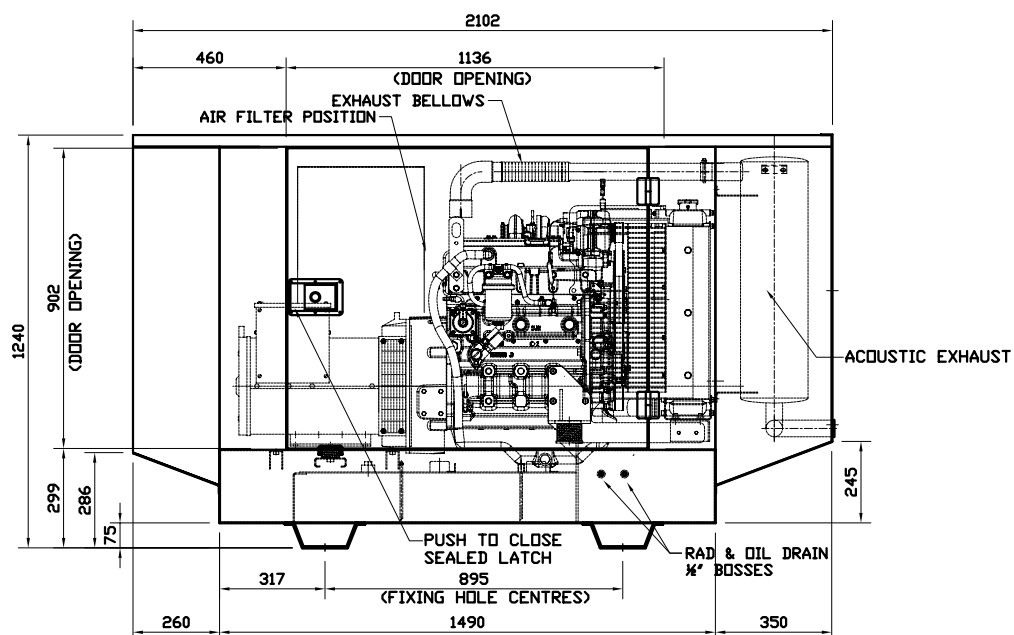
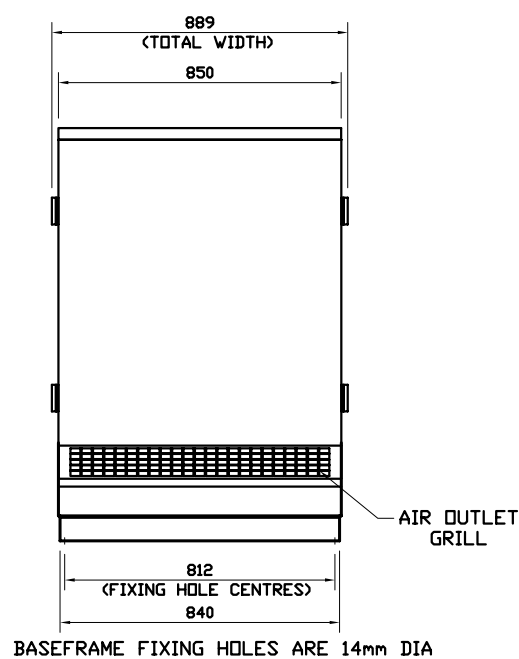
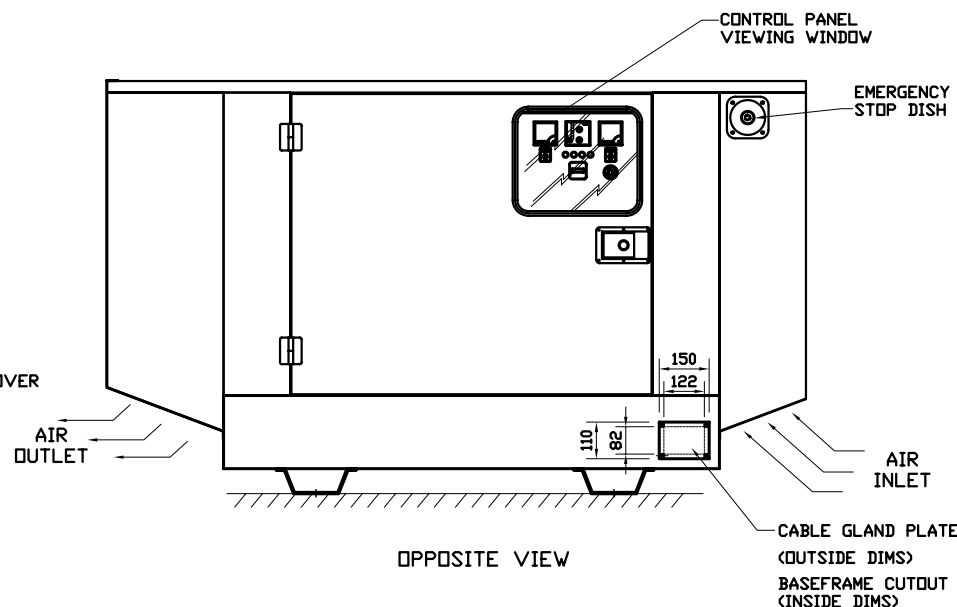
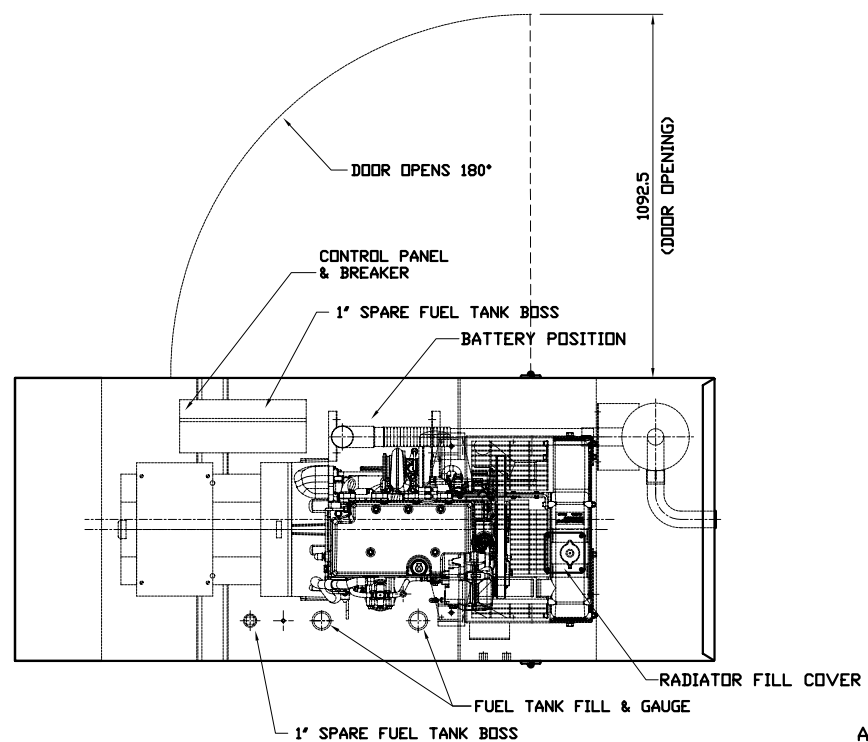
PLEASE NOTE WEIGHTS MAY VARY DEPENDING ON ALTERNATOR COMBINATION

THIS DRAWING IS OF A PROTOTYPE, THE DESIGN MAY VARY SLIGHTLY TO THE FINAL PRODUCTION UNIT.



GeneratorJoe

4016 Quartz Drive
Santa Rosa, CA 95405
Phone: 707 539-9003
Fax: 707 539-5212
Email: sales@generatorjoe.NET
Web www.generatorjoe.NET



ISS	ALTERATIONS	DATE
B	DATA ADDED	27-09-05 P.R

NOTES
TOLERANCES: BETWEEN HOLE CENTRES & HOLE CENTRE TO EDGE (ON FLAT) ± 0.2
HOLE CENTRES TO BEND AND EDGES TO BEND ± 0.5
ACROSS EACH BEND ± 0.5
FABRICATION ± 1.0
HOLE DIAMETERS AND SLOT WIDTHS +0.1, -0.0
ANGULAR ± 0.5°
THIRD ANGLE PROJECTION DO NOT SCALE, IF IN DOUBT ASK

DISTRIBUTION			
MASTER	FABRICATOR		
TITLE:	ACOUSTIC GENERAL ARRANGEMENT		
CLIENT:	N/A		
SITE:	N/A		
W.O. No.:	N/A	ENGINEER:	N JONES
TYPE:	JD 4024	CHECKED:	
SCALE:	NTS	DATE:	

TOTAL No. OF SHEETS: 1	
DRAWING NO.	ISSUE
JGA023	B
BROADCASTCROWN	