



GeneratorJoe

4016 Quartz Drive
 Santa Rosa, CA 95405
 Phone: 707 539-9003
 Fax: 707 539-5212
 Email: sales@generatorjoe.NET
 Web www.generatorjoe.NET

GENERAL NOTES -
 GENSET RATING
 50 Hz - PRIME 1250 KVA, STANDBY 1400 KVA
 60 Hz - PRIME 1375 KVA, STANDBY 1600 KVA

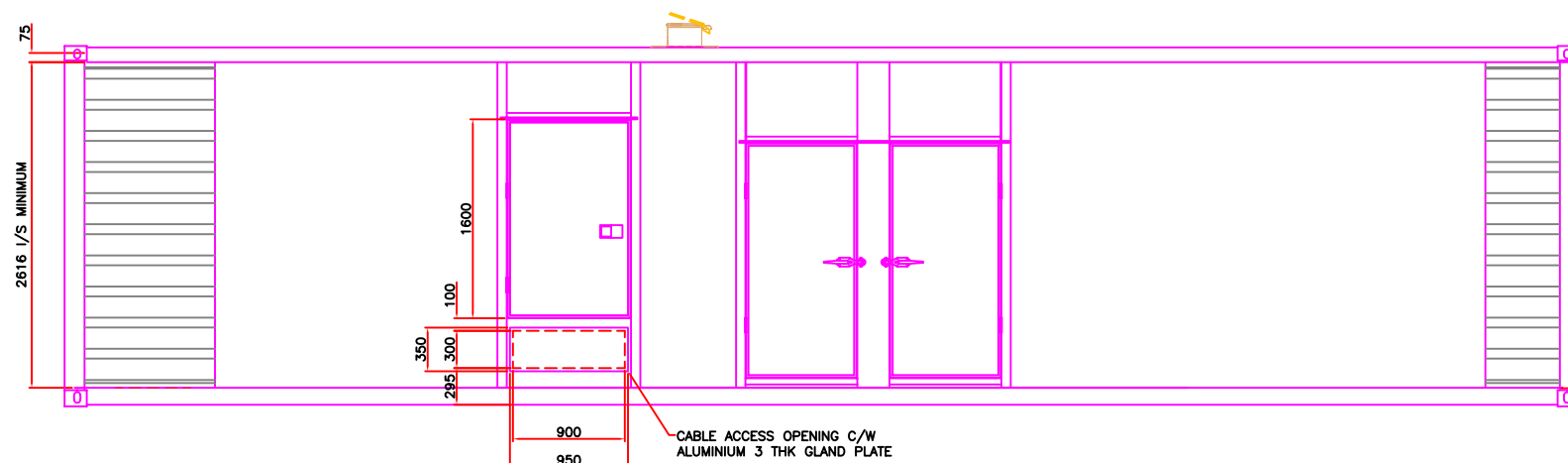
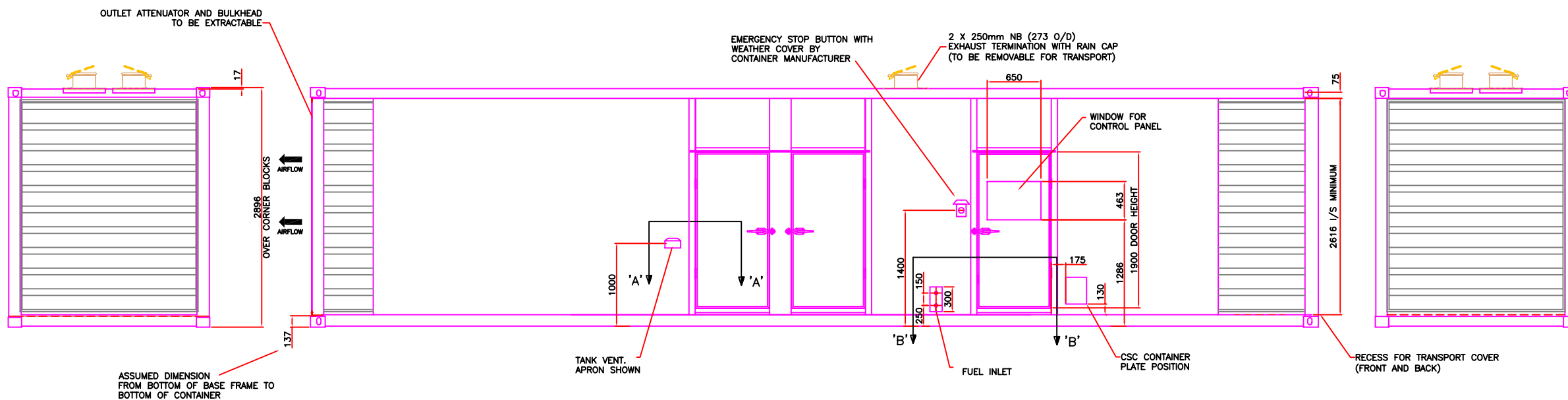
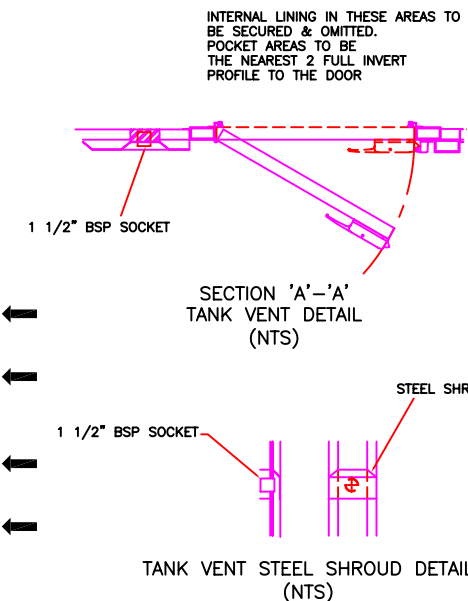
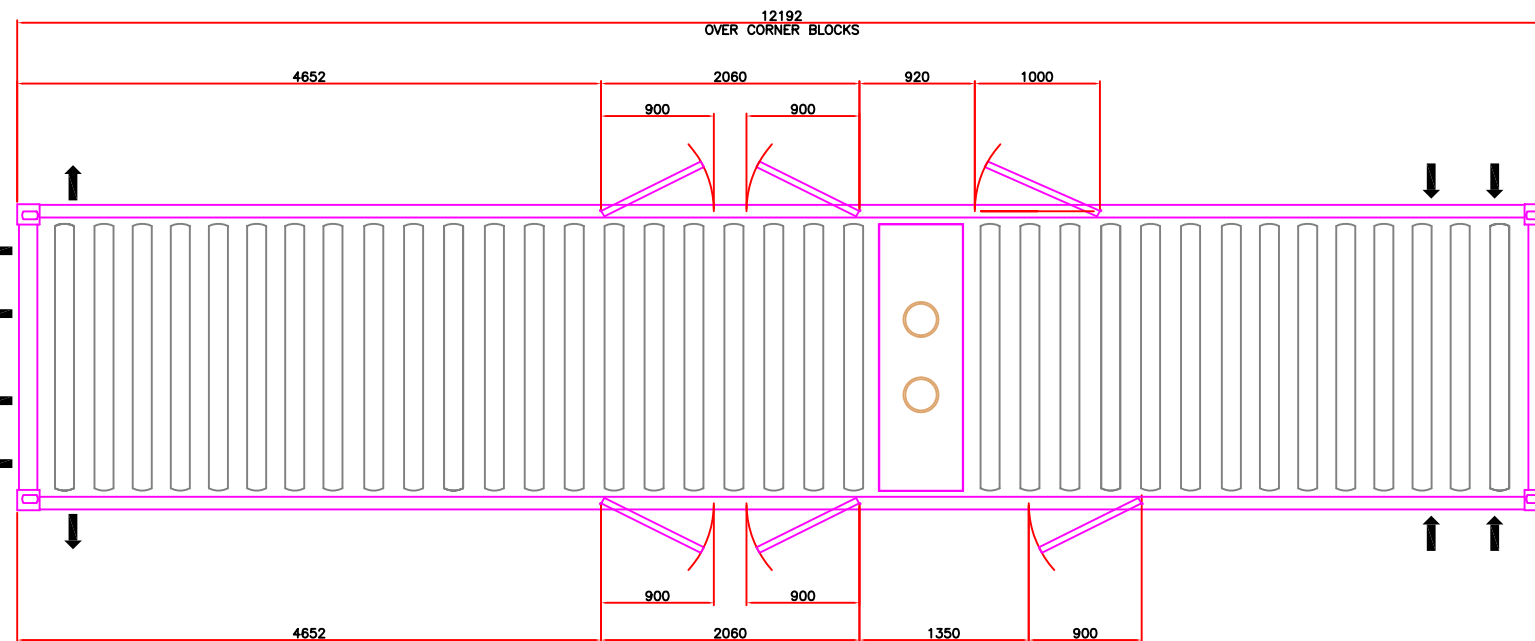
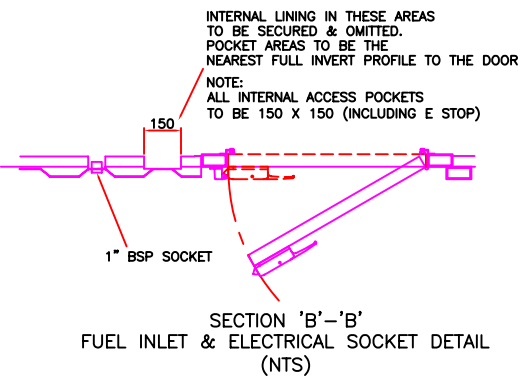
FREQUENCY 50Hz @ 1500 RPM
 FREQUENCY 60Hz @ 1800 RPM
 ENGINE - CUMMINS KTA50 G3
 ALTERNATOR - NEWAGE P1734A (50Hz AND 60Hz PRIME)
 ALTERNATOR - NEWAGE P1734B (60Hz STANDBY)
 RADIATOR - BEARWARD 56681

TOTAL GENSET WEIGHT - 9730 KG DRY 10191 KG WET
 TOTAL CONTAINER WEIGHT - 8500 KG

NOISE LEVEL - 85 dBA MEAN @ 1M ASSUMING FREE FIELD
 CONDITIONS WITH BACKGROUND NOISE NON-CONTRIBUTORY
 AND FOR THE GENSET TO BE RUNNING AT 100% OF THE
 STANDBY RATING.

NOTE - ALL DIMENSIONS ARE ASSUMED AND ARE TO BE CONFIRMED
 BY CONTAINER MANUFACTURER THAT THEY ARE FEASIBLE IN REGARDS
 TO CONTAINER CONSTRUCTION DESIGN. THE CONTAINER CONSTRUCTION
 ON THIS DRAWING IS ASSUMED AND WILL NEED TO BE CONFIRMED
 BY CONTAINER MANUFACTURER. THIS ESPECIALLY APPLIES TO
 BREAKER BOX OPENINGS.
 THE EXHAUST SILENCER ENVELOPE SHOWN IS SUBJECT TO FINAL
 DESIGN BY CONTAINER MANUFACTURER.

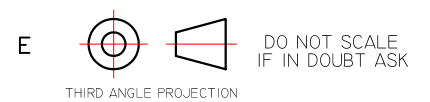
READ DRAWING IN CONJUNCTION WITH CONTAINER SPEC.SEC-SC01-A



D	ELECTRICAL SOCKET REMOVED	SKM	07.6.06
D	CSC PLATE POSITION ADDED	SKM	28.4.06
B	DOUBLE DOOR DIMS ADDED	SKM	24.4.06

No. ALTERATIONS CHK'D DATE

NOTES - MECHANICAL
 TOLERANCES:
 GENERAL TOLERANCE + / - 5MM
 FABRICATION + / - 3MM
 HOLE CENTRES + / - 1MM
 OTHER TOLERANCES AS STATED
 WHERE REQUIRED



NOTES - ELECTRICAL
 CABLE SIZE: 1.5MM
 UNLESS OTHERWISE STATED
 CABLE COLOURS
 DC CONTROL: VIOLET
 DC POWER: POSITIVE BROWN
 NEGATIVE BLUE
 AC POWER SINGLE PHASE: LIVE BROWN
 NEUTRAL BLUE
 AC POWER THREE PHASE: L1 BROWN
 L2 BLACK, L3 GREY, NEUTRAL BLUE
 AC CONTROL: BLACK

TITLE:	1250KVA EXPORT SET		
CLIENT:			
SITE:			
W.O. No.:	STANDARD	ENGINEER:	SKM
TYPE:	BCC1250P	DRAWN BY:	SKM
SCALE:	NTS	DATE:	04.04.06
TOTAL No. OF SHEETS (1 - 999)			1
DRAWING NO.			ISSUE
BCC1250-AC02-AI			D

