

FOR INDIVIDUAL GEN-SET MODEL TYPES SEE BROADCROWN LITERATURE.

ENGINE TYPE: 6081HF  
ALTERNATOR: UCI274  
(UCI274K ILLUSTRATED)

USEABLE FUEL CAPACITY: 550L

SHIPPING WEIGHT  
(WITH OIL): 2670Kg - 2750Kg

WET WEIGHT  
50/50 GLYCOL & FUEL: 3180Kg - 3260Kg

OIL CAPACITY: 32 LITRES  
COOLING CAPACITY: 36.5 LITRES

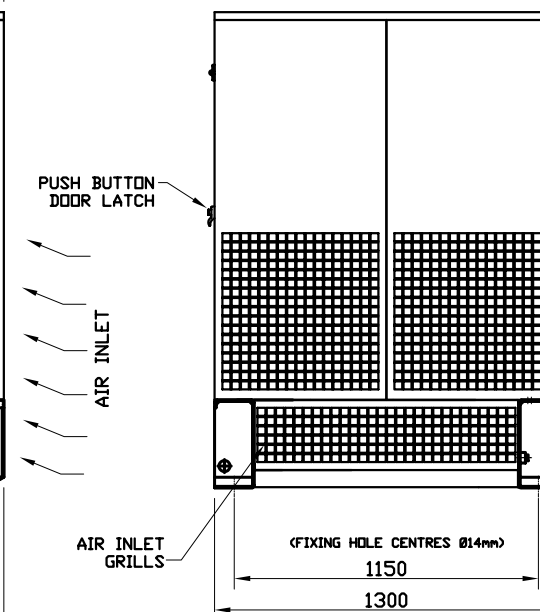
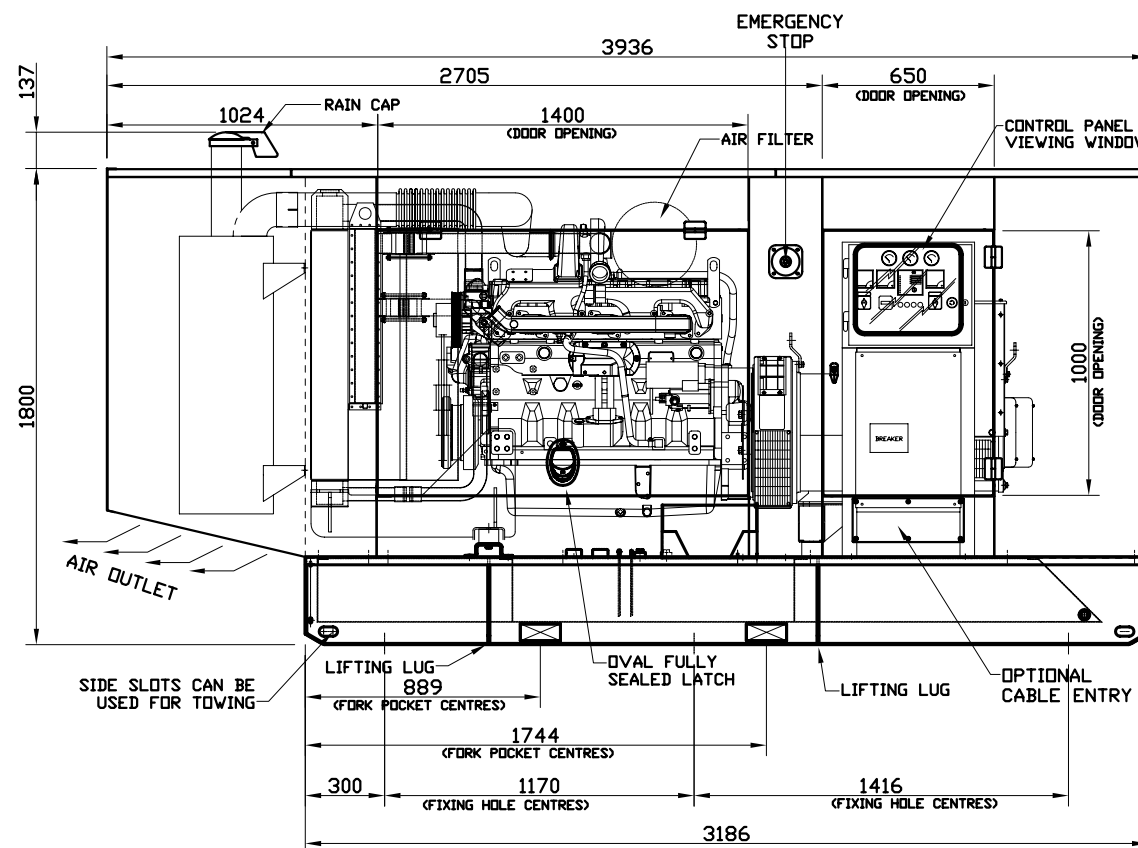
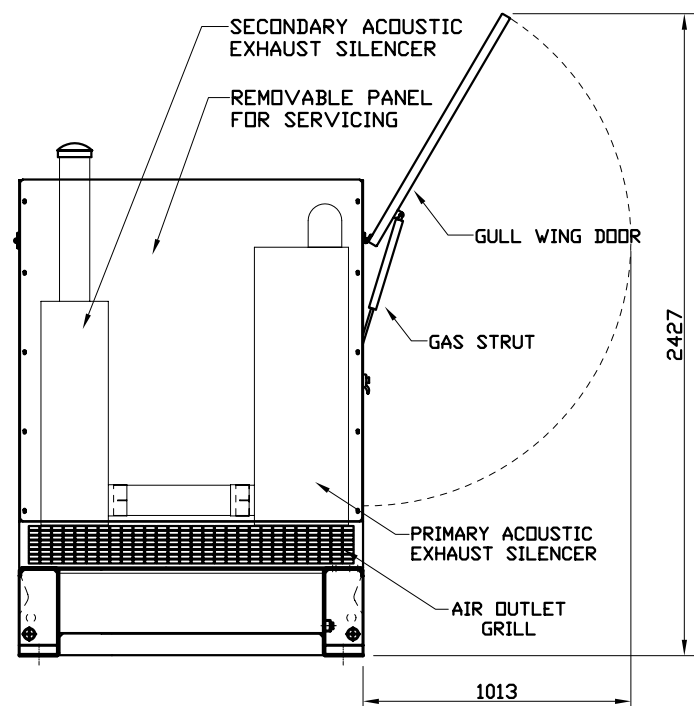
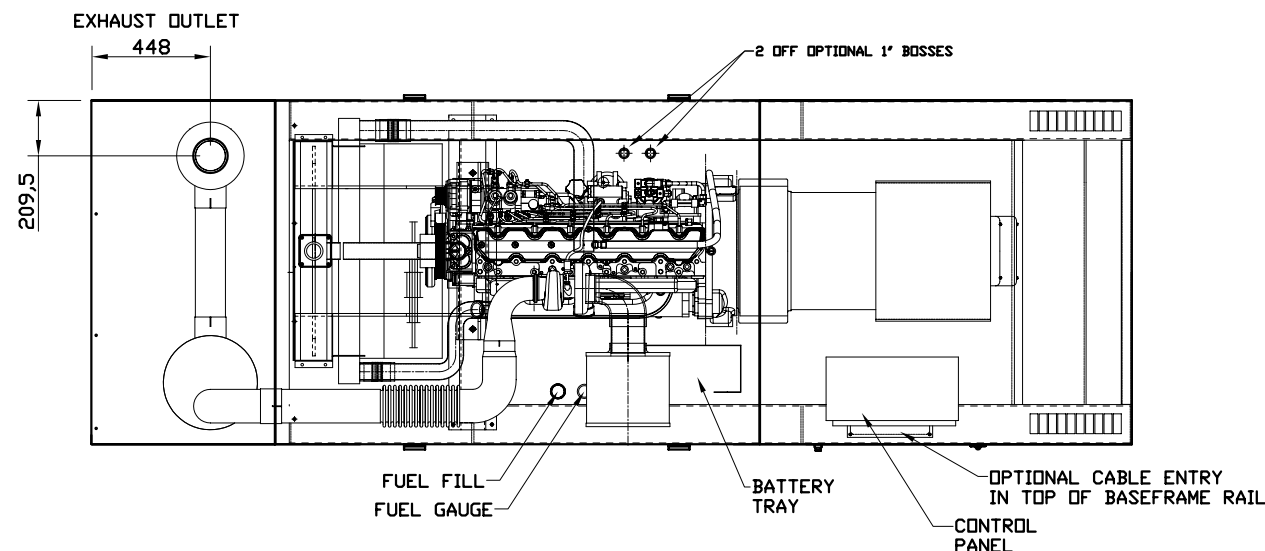
GENERATOR IS TO BE PLACED ON A FLAT FLOOR OR CONCRETE BASE.

PLEASE NOTE WEIGHTS MAY VARY DEPENDING ON ALTERNATOR COMBINATION.



**GeneratorJoe**

4016 Quartz Drive  
Santa Rosa, CA 95405  
Phone: 707 539-9003  
Fax: 707 539-5212  
Email: sales@generatorjoe.NET  
Web www.generatorjoe.NET



ISS	ALTERATIONS	DATE
C	STOP DISH MOVED	20-10-03 P.R
D	FUEL CAPACITY CORRECTED, WEIGHTS ADJUSTED.	22-01-04 P.R
E	EXHAUST OUTLET DIMENSIONS ADDED.	22-11-05 P.R

NOTES

TOLERANCES:  
BETWEEN HOLE CENTRES & HOLE CENTRE TO EDGE (ON FLAT) ± 0.2

HOLE CENTRES TO BEND AND EDGES TO BEND ± 0.5

ACROSS EACH BEND ± 0.5

FABRICATION ± 1.0

HOLE DIAMETERS AND SLOT WIDTHS +0.1, -0.0

ANGULAR ± 0.5°

THIRD ANGLE PROJECTION  
DO NOT SCALE, IF IN DOUBT ASK

DISTRIBUTION	
MASTER	FABRICATOR
TITLE:	J D 6081HF ACOUSTIC CANOPY
CLIENT:	
SITE:	
W.O. No.:	ENGINEER: N JONES
TYPE:	200P/230P/250P/280P CHECKED:
SCALE:	NTS DATE:
TOTAL No. OF SHEETS: 1	
DRAWING NO.	ISSUE
JGA008	E
<b>BROADCROWN</b>	

A  
B  
C  
D  
E  
F  
G  
H

1 2 3 4 5 6 7 8