

4016 Quartz Drive
 Santa Rosa, CA 95405
 Phone: 707 539-9003
 Fax: 707 539-5212
 Email: sales@generatorjoe.NET
 Web www.generatorjoe.NET



GeneratorJoe

GENERAL NOTES -

GENSET RATING
 1000 KVA
 800 KW
 VOLTAGE 220V
 CURRENT 2624A
 FREQUENCY 60Hz @ 1800 RPM

ENGINE - CUMMINS QSK23 G3
 ALTERNATOR - NEWAGE HC1634H
 RADIATOR - BEARWARD 5673300001

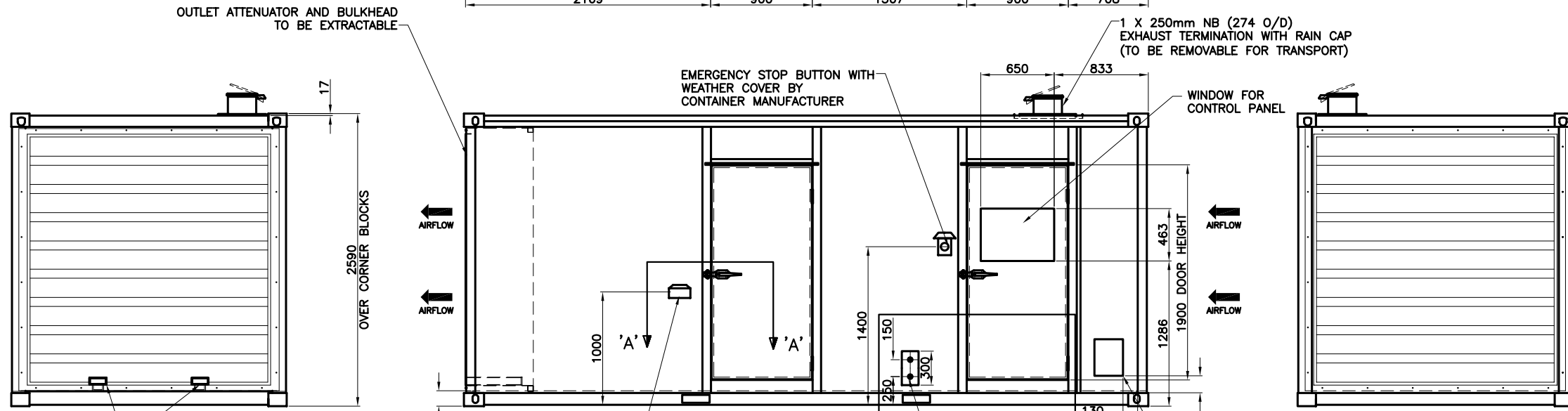
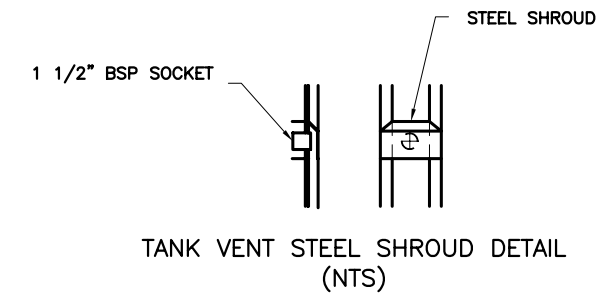
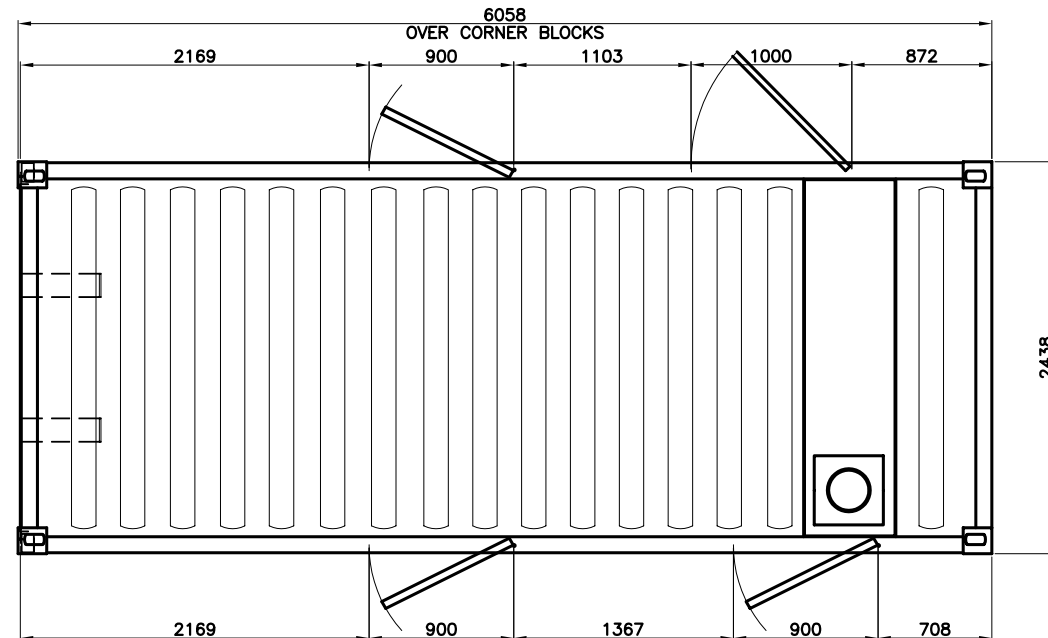
TOTAL GENSET WEIGHT (INCLUDING FULL FUEL TANK) - 6600 KG
 TOTAL CONTAINER WEIGHT - 5200 KG

NOISE LEVEL - 85 dBA MEAN @ 1M ASSUMING FREE FIELD
 CONDITIONS WITH BACKGROUND NOISE NON-CONTRIBUTORY
 AND FOR THE GENSET TO BE RUNNING AT 100% OF THE
 STANDBY RATING.

NOTE - ALL DIMENSIONS ARE ASSUMED AND ARE TO BE CONFIRMED
 BY CONTAINER MANUFACTURER THAT THEY ARE FEASIBLE IN REGARDS
 TO CONTAINER CONSTRUCTION DESIGN. THE CONTAINER CONSTRUCTION
 ON THIS DRAWING IS ASSUMED AND WILL NEED TO BE CONFIRMED
 BY CONTAINER MANUFACTURER. THIS ESPECIALLY APPLIES TO
 BREAKER BOX OPENINGS.
 THE EXHAUST SILENCER ENVELOPE SHOWN IS SUBJECT TO FINAL
 DESIGN BY CONTAINER MANUFACTURER.

READ DRAWING IN CONJUNCTION WITH CONTAINER SPEC-SEC-SC01-A

NOTE:-
 FOR INTERNAL CONTAINER ARRANGEMENT SEE DRAWING N'
 BCC800P-GL02-A1-A

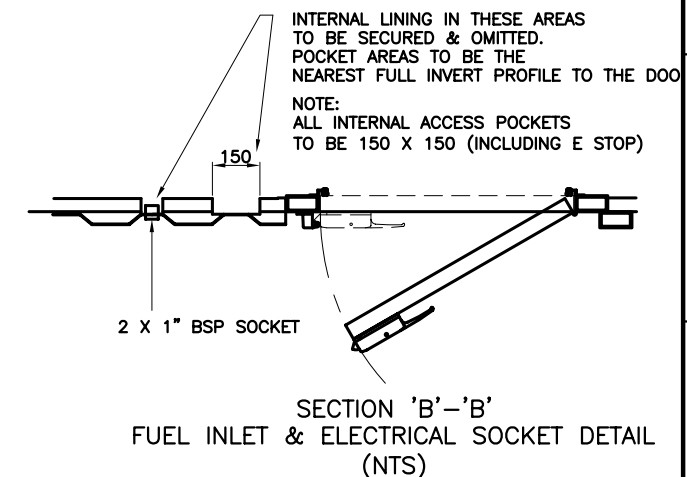
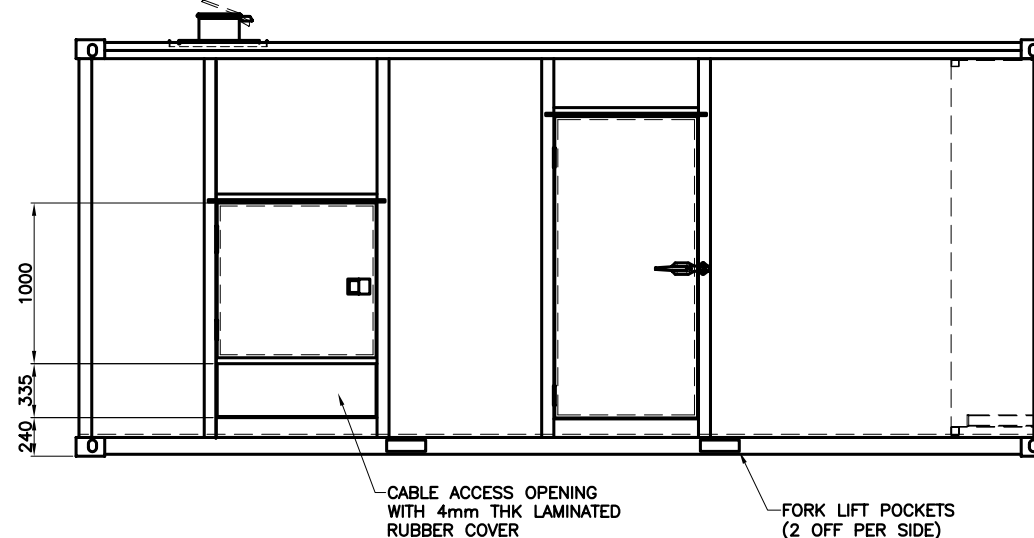
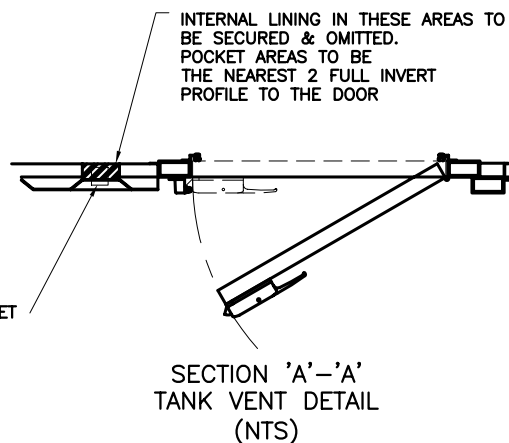


150mm x 60mm FORK POCKETS
 AS LOW AS POSSIBLE IN ATTENUATOR.
 POCKETS TO BE @ 900 CTRS.
 ATTENUATOR SUPPORT SECTION WELDED TO UNDERNEATH.

ASSUMED DIMENSION FROM BOTTOM OF BASE FRAME TO BOTTOM OF CONTAINER

TANK VENT APRON SHOWN

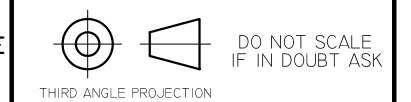
FUEL INLET/OUTLET



D	ELECTRICAL SOCKET REMOVED	SKM	28.4.06
D	CSC PLATE POSITION ADDED	SKM	28.4.06
B	EXHAUST TERMINATION SIZE CORRECTED	SKM	05.4.06

No.	ALTERATIONS	CHK'D	DATE
-----	-------------	-------	------

NOTES - MECHANICAL
 TOLERANCES:
 GENERAL TOLERANCE + / - 5mm
 FABRICATION + / - 3mm
 HOLE CENTRES + / - 1mm
 OTHER TOLERANCES AS STATED WHERE REQUIRED



NOTES - ELECTRICAL
 CABLE SIZE: 1.5MM UNLESS OTHERWISE STATED
 CABLE COLOURS
 DC CONTROL: VIOLET
 DC POWER: POSITIVE BROWN, NEGATIVE BLUE
 AC POWER SINGLE PHASE: LIVE BROWN, NEUTRAL BLUE
 AC POWER THREE PHASE: L1 BROWN, L2 BLACK, L3 GREY, NEUTRAL BLUE
 AC CONTROL: BLACK

TITLE:	GENSET CONTAINER ARRANGEMENT		
CLIENT:	EXPORT		
SITE:			
W.O. No.:	STANDARD	ENGINEER:	SKM
TYPE:	BCC800P/880S	DRAWN BY:	SKM
SCALE:	1:25	DATE:	22.03.06

TOTAL No. OF SHEETS (1 - 999)	1
DRAWING NO.	BCC800P-AC02-A1
ISSUE	D

BROADCROWN