

Exclusively from your Caterpillar® dealer



STANDBY 125 kW
PRIME 114 kW
60 Hz

Model	Standby — kW (kVA)	Prime — kW (kVA)
	Natural	Natural
G125G1	125 (156.3)	114 (142.5)

GeneratorJoe

FEATURES

GENERATOR SET

- Complete system designed and built at ISO 9001 certified facilities
- Factory tested to design specifications at full load conditions

ENGINE

- Governor, Isochronous electronic
- Electrical system, 12 VDC
- Cartridge type filters
- Battery, rack, and cables
- Coolant and lube oil drains piped to edge of base

GENERATOR

- Insulation system, class H
- Drip proof generator air intake (NEMA 2, IP23)
- Electrical design in accordance with BS5000 Part 99, IEC60034-1, EN61000-6, NEMA MG-1.33

AUTOMATIC VOLTAGE REGULATOR

- Voltage within $\pm 0.5\%$ 3 Phase at steady state from no load to full load
- Provides fast recovery from transient load changes

COOLING SYSTEM

- Radiator and cooling fan complete with protective guards
- Standard ambient temperatures up to 131° F (55° C)

MOUNTING ARRANGEMENT

- Heavy-duty fabricated steel base with lifting points
- Anti-vibration pads to ensure vibration isolation
- Complete OSHA guarding
- Stub-up pipe ready for connection to silencer pipework
- Sound attenuated enclosures are available
- Flexible fuel lines to base with NPT connections

CIRCUIT BREAKER

- UL/CSA listed
- 3-pole with solid neutral
- NEMA 1 steel enclosure, vibration isolated
- Electrical stub-up area directly below circuit breaker

CONTROL SYSTEM

- 2001 Autostart control panel
- Vibration isolated NEMA 1 enclosure with lockable hinged door
- AC and DC wiring harnesses

EQUIPMENT FINISH

- All electroplated hardware
- Anticorrosive protection prior to painting
- High gloss polyurethane paint for durability and scuff resistance

QUALITY STANDARDS

- BS4999, BS5000, BS5514, EN61000-6, NEMA MG-1.33, NFPA 110 (with optional equipment)

DOCUMENTATION

- Operation and maintenance manuals provided
- Wiring diagrams included

WARRANTY

- All equipment carries full manufacturer's warranty
Extended warranty terms available



4016 Quartz Drive
Santa Rosa, CA 95405
Phone: 707 539-9003
Fax: 707 539-5212
Email: sales@generatorjoe.NET
Web: www.generatorjoe.NET

Materials and specifications are subject to change without notice.

STANDBY 125 kW
PRIME 114 kW
60 Hz

OLYMPIAN™

GeneratorJoe

Exclusively from your Caterpillar® dealer

OPTIONAL EQUIPMENT*

ENCLOSURE

- SA enclosure (includes internal silencer system)
- Panel viewing window
- External emergency stop pushbutton

SILENCER SYSTEM — OPEN UNIT

- Level 1 silencer
- Level 2 silencer
- Level 3 silencer
- Mounting kit
- Through-wall installation kits

ENGINE

- Battery heater
- Lube oil drain pump
- Lube oil sump heater

CIRCUIT BREAKER

- Auxiliary voltfree contacts
- Shunt trip (100+ amp breakers)

GENERATOR

- Anti-condensation heater
- AREP excitation system
- Generator upgrade 1 size
- Permanent magnet generator

COOLING SYSTEM

- Coolant heater
- Low coolant temperature alarm
- Low coolant level shutdown
- Radiator transition flange

MOUNTING ACCESSORIES

- Seismic (Zone 4) vibration isolators

*Some options may not be available on all models. Not all options are listed.

CONTROL SYSTEM

- Control Panel Removal, AC and DC wiring harnesses terminated in sockets
- 4001 Autostart control panel
- 4001E Autostart control panel
- Access 4000 digital control panel

FUEL SYSTEM

- Low gas pressure alarm

REMOTE ANNUNCIATORS

- 8- and 16-channel remote annunciator panel (supplied loose)
- Remote annunciator upgrade normal/run control switch
- Remote annunciator upgrade lockdown emergency stop button

MISCELLANEOUS ACCESSORIES

- Toolkit
- Additional operator's manual pack
- Special enclosure color
- CSA certification
- French or Spanish Language labels

EXTENDED WARRANTY

- 36 months
 - 48 months
 - 60 months
- (See warranty policy for details of coverage)

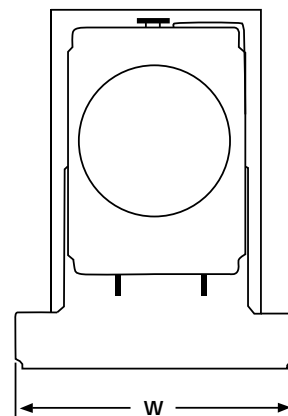
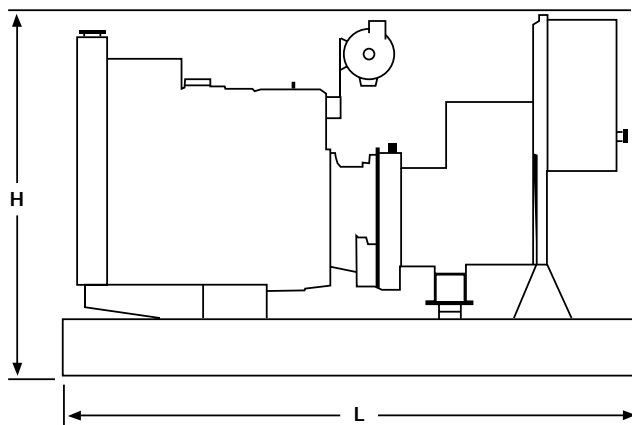
TESTING

- Factory witness test (restricted to 6 hours — full load, 1.0 pf)



4016 Quartz Drive
 Santa Rosa, CA 95405
 Phone: 707 539-9003
 Fax: 707 539-5212
 Email: sales@generatorjoe.NET
 Web www.generatorjoe.NET

GENERATOR SET DIMENSIONS AND WEIGHTS



Model	Length in (mm)	Width in (mm)	Height in (mm)	Weight lbs (kg)**
G125G1	102.4 (2600)	43.3 (1100)	57.1 (1448.4)	3027 (1373)

NOTE: General configuration not to be used for installation. See specific dimensional drawings for detail.

**Includes oil and coolant

S T A N D B Y 1 2 5 k W
P R I M E 1 1 4 k W
6 0 H z



OLYMPIAN™

Exclusively from your Caterpillar® dealer

SPECIFICATIONS



GENERATOR

Voltage Regulation ±0.5% 3 Phase
Phase at steady state from no load to full load
Frequency ±0.25% for constant load,
no load to full load
Waveform Distortion THD less than 4%,
Radio Interference Compliance with EN61000-6
Telephone Influence Factor TIF <50
per NEMA MG 1-32.11
Telephone Harmonic Factor THF <2%
Stator Winding 2/3 pitch
Type Brushless, self excited, self-regulated,
drip proof, 4-pole, sealed bearing,
direct coupled by flexible disk,
12 reconnectable leads
Insulation Class H per NEMA MG1-1.66
Temperature Rise Within Class H limits
Overspeed Capability 125%
Available Voltages 277/480, 120/240,
460/266, 220/127, 120/208, 600/347
Deration Please consult factory
for available outputs
Ratings At 77° F (25° C), 500 ft. (152.4 m),
40% humidity,
0.8 pf



ENGINE

Manufacturer General Motors
Model Industrial Powertrain
Type Vortec 8.1L
Aspiration Turbocharged
Cylinder Configuration V8

Displacement — cu in (L) 496 (8.1)
Bore — in (mm) 4.25 (108)
Stroke — in (mm) 4.37 (111)
Compression Ratio 9.1:1
Governor
Type Electronic
Class A1

Piston Speed — ft/sec (m/sec) 21.9 (6.7)
Air Cleaner Type Dry, medium duty

Natural Gas

Engine Speed — rpm 1800
Max Power at Rated rpm — hp (kW)
Standby 210 (156)
Prime 189 (141)
BMEP — psi (kPa)
Standby 186 (1285)
Prime 168 (1157)



CONTROL PANEL

NEMA 1 steel enclosure with lockable hinged door
Vibration isolated mounted Autostart control panel
Single location customer connector point
Electrical stub-up area directly below control panel

GeneratorJoe

4016 Quartz Drive
Santa Rosa, CA 95405
Phone: 707 539-9003
Fax: 707 539-5212
Email: sales@generatorjoe.NET
Web www.generatorjoe.NET

RATING DEFINITIONS

Standby — Applicable for supplying continuous electrical power (at variable load) in the event of a utility power failure. No overload is permitted on these ratings. The generator is peak rated (as defined in ISO8528-3).

Prime — Applicable for supplying continuous electrical power (at variable load) in lieu of commercially purchased power. There is no limitation to the annual hours of operation and the generator set can supply 10 percent overload power for 1 hour in 12 hours.

STANDBY 125 kW
PRIME 114 kW
60 HZ



OLYMPIAN™

Exclusively from your Caterpillar® dealer

G125G1 (3-Phase)

Materials and specifications are subject to change without notice.

Generator Set Technical Data — 1800 rpm/60 Hz		Natural Gas	
		Standby	Prime
Power Rating	kW (kVA)	125.0 (156.3)	114.0 (142.5)
Lubricating System Type: Full Pressure Oil Filter: Spin-On, Full Flow Oil Type Required: API CF-4 Total Oil Capacity Oil Pan	U.S. gal (L) U.S. gal (L)	2.25 (8.5) 2.13 (8.0)	2.25 (8.5) 2.13 (8.0)
Fuel System Generator Set Fuel Consumption 100% Load 75% Load 50% Load	Cfh (m³/hr) Cfh (m³/hr) Cfh (m³/hr)	1508 (42.7) 1138 (32.2) 779 (22.1)	1375 (38.9) 1042 (29.5) 715 (20.3)
Engine Electrical System Ignition System: Electronic, Distributorless Voltage/Ground: 12/Negative Battery Charging Generator Ampere Rating	Amps	70	70
Cooling System Water Pump Type: Centrifugal Radiator System Capacity Incl. Engine Maximum Coolant Static Head Coolant Flow Rate Minimum Water Temperature to Engine Temperature Rise Across Engine (Air) Heat Rejected to Coolant at Rated Power Total Heat Radiated to Room at Rated Power Radiator Fan Load	U.S. gal (L) Ft H ₂ O (m H ₂ O) U.S. gal/hr (L/min) °F (°C) °F (°C) Btu/min (kW) Btu/min (kW) Hp (kW)	9.8 (37.1) 17.0 (5.18) 2214 (139.7) 158 (70) 14 (8) 7734 (136) 2673 (47) 7 (5.2)	9.8 (37.1) 17.0 (5.18) 2214 (139.7) 158 (70) 14 (8) 7245 (127.4) 2502 (44) 7 (5.2)
Air Requirements Combustion Air Flow Maximum Air Cleaner Restriction Radiator Cooling Air (zero restriction) Generator Cooling Air Allowable Air Flow Restriction (After radiator) Cooling Airflow (@ rated speed) Rate with restriction	Cfm (m³/min) In H ₂ O (kPa) Cfm (m³/min) Cfm (m³/min) In H ₂ O (kPa) Cfm (m³/min)	272 (7.7) 25 (6.2) 7345 (208) 932 (26.4) 0.5 (0.125) 6533 (185)	242 (6.8) 25 (6.2) 7345 (208) 932 (26.4) 0.5 (0.125) 6533 (185)
Exhaust System Maximum Allowable Backpressure Exhaust Flow at Rated kW Exhaust Temperature at Rated kW — Dry Exhaust	In Hg (kPa) Cfm (m³/min) °F (°C)	2 (6.8) 780 (22.1) 1544 (840)	2 (6.8) 692 (19.6) 1508 (820)
Generator Set Noise Rating* (Without Attenuation) at 3 ft (1 m)	dB(A)	TBA	TBA

Generator Technical Data	277/480V	120/240V	120/208V	266/460V	127/220V
Motor Starting Capability: (kVA) (30% Voltage Dip)					
Self Excited	360	283	283	335	311
PMG/AREP Excited	469	370	370	437	406
Full Load Efficiencies:					
Standby	92.7	92.3	92.3	92.6	92.6
Prime	92.8	92.5	92.5	92.7	92.7
Reactances (per unit):					
X _d	2.75	3.66	3.66	2.99	3.27
X' _d	0.10	0.13	0.13	0.10	0.11
X'' _d	0.057	0.076	0.076	0.062	0.068
X _q	1.65	2.19	2.19	1.79	1.96
X'' _q	0.068	0.090	0.090	0.074	0.080
X ₂	0.063	0.083	0.083	0.068	0.075
X ₀	0.004	0.006	0.006	0.005	0.005
Time Constants:	t' _d 100 ms	t'' _d 10 ms	t' _{do} 2865 ms	t _a 15 ms	

* dB(A) levels are for guidance only

GeneratorJoe

LEHF3102-01 (09-03)