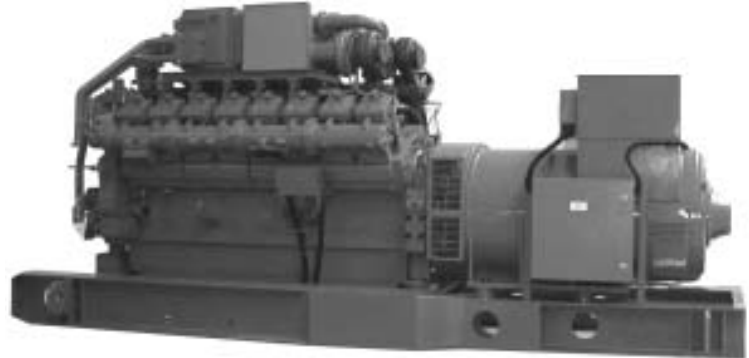


**GeneratorJoe**



**Power Generation**

**Gas Engine Powered  
Generating Sets  
1160 kWe 50 Hz  
950-1400 kWe 60 Hz  
QSK60G Series Engines**



4016 Quartz Drive  
Santa Rosa, CA 95405  
Phone: 707 539-9003  
Fax: 707 539-5212  
Email: sales@generatorjoe.NET  
Web www.generatorjoe.NET

**Standard Genset Features**

**Single Source Responsibility**

Design, manufacture and testing of engine, alternator, control system and complete generating set are all produced by companies within the Cummins Group

**International Integrity**

Assurance and strength of a worldwide major corporation backing the product

**Global Backing**

24 hour spares and service availability in 72 countries

**Single Source Warranty**

Total product guaranteed by Cummins Power Generation

**Packaged Units**

Integrated unit with control panel, starting system and other accessories

**Cummins Engine**

- Heavy duty 4 cycle water cooled engine
- MCM700/SSM558 full authority electronic management
- Woodward PROACT actuator to drive throttle valve
- CENSE engine monitoring system

**Ready Filled**

Every set comes filled with lube oil

**Alternator**

- Brushless, self-exciting machine
- Close voltage regulation
- Rotor and exciter impregnated with oil and acid resisting resin
- 12 lead reconnectable
- Exceptional short circuit capability
- Low waveform distortion with non linear loads

**Ratings**

All kW Power ratings based on a 35°C ambient temperature reference. Refer to factory for deration for temperatures above 35°C and for operation in island mode.

**Control System**

- PCS PowerCommand Supervisor
- Microprocessor control
- Integrated voltage regulation
- Superior alternator and genset protection system
- Totally reliable and proven system
- HMI (touch screen)
- PLC




**Quality Assurance**  
Registered Firm Certificate Number FM509 in accordance with:  
BS EN ISO 9001  
Quality Assurance Schedule 3420/1



Cummins Power Generation, Cummins Engines and  
Newage Alternators are all part of the same group

Ratings									
50 Hz					60 Hz				
Model	kWe	kVA*	rpm	Pressure bar (G)	Model	kWe	kVA*	rpm	Pressure bar (G)
1160 GQKA	1160	1438	1500	16	950 GQKA	950	1154	1200	16
					1400 GQKA	1400	1730	1800	16

\*@ 0.8pf

**A Single Source for all Power System Solutions**

# Specifications



# GeneratorJoe

4016 Quartz Drive  
Santa Rosa, CA 95405  
Phone: 707 539-9003  
Fax: 707 539-5212  
Email: sales@generatorjoe.NET  
Web www.generatorjoe.NET

## Generator Set Performance

### Voltage Regulation

Maintains voltage output to within  $\pm 1.0\%$ .  
At any power factor between 0.8 lagging and unity.  
At any variations from No load to Full load.  
At any variations from Cold to Hot.  
At speed droop variations up to 4.5%.

### Frequency Regulation

Isochronous under varying loads from no load to 100% full load.

### Random Frequency Variation

Will not exceed  $\pm 0.25\%$  of its mean value for constant loads – no load to full load.

### Waveform

Total harmonic distortion open circuit voltage waveform in the order of 1.5%. Three-phase balanced load in the order of 5.0%.

### Telephone Influence Factor (TIF)

TIF better than 50.  
THF to BS4999 Part 40 better than 2%.

### Alternator Temperature Rise

Class H insulation. Temperature rise up to 125°C permitted.

### Radio Interference

In compliance with BS800 and VDE levels G and N.

## Engine

Cummins QSK60G spark ignited lean burn gas combustion engines. 16-cylinder, V form.

### Type

Water cooled, four cycle, turbo charged and aftercooled.

### Construction

Four valves per cylinder, forged steel crankshaft and connecting rods, cast iron block, replaceable wet liners.

### Fuel System

Safety shutdown solenoid valve, pressure regulator valve, manual shut-off valve, dust filter. Flexible fuel line.

### Control

Fully integrated controls and monitoring including fuel system, ignition system and governing.  
MCM700 provides engine protection, control and governing.  
SSM558 caters for fuel and ignition protection and control.  
CENSE provides detailed engine monitoring.

### Filters

Dry element air filters with restriction indicator. Spin-on full flow paper element combination lube oil filters fitted. Spin-on corrosion resistor filter.

### Starting

Electric start system through single electric starter motor.

### Ignition

Individual coil on plug arrangement.

### Cooling

Separate LT and HT cooling circuits. Coolant heater, water circulating pump and thermostat. Engine driven water pumps.

## Alternator

### Type

Brushless, single bearing, revolving field, 4-pole, drip proof, screen protected. Class H insulation (LV), Class F insulation (MV & HV).  
Enclosed to minimum IP22 as standard. IC 01 cooling system.  
Fully interconnected damper winding. AC exciter and rotating rectifier unit.

Epoxy coated stator winding. Rotor and exciter impregnated with tropical grade insulating oil and acid resisting polyester resin. Dynamically balanced rotor to BS5625 grade 2.5.  
Sealed for life bearings.  
Layer wound mechanically wedged rotor.

### Exciter

Triple dipped in moisture, oil and acid resisting polyester varnish and coated with anti-tracking varnish.  
PMG self-exciting.  
Output windings with 2/3 pitch for improved harmonics and paralleling ability.  
Engine and alternator coupled via a flexible coupling.

## Chassis

Fabricated and welded steel chassis  
Spring anti-vibration mountings supplied loose

### Finish

Etch undercoated and finished in high gloss durable green

### General

Complete set of operating and instruction manuals

### Testing

Fully tested against a resistive load. Copy of test certificate provided.

## Compliance Standards

To BS4999/5000 pt 99,  
VDE 0530, UTE5100,  
NEMA MG1-22, CEMA,  
IEC 34, CSA A22.2,  
AS1359, BSS5514,  
ISO 3046 and ISO 8528



4016 Quartz Drive  
Santa Rosa, CA 95405  
Phone: 707 539-9003  
Fax: 707 539-5212  
Email: sales@generatorjoe.NET  
Web www.generatorjoe.NET

# GeneratorJoe

# Control System GCP System Configuration

## Fully Integrated System

- PC based HMI (touchscreen)
- PowerCommand Supervisor™
- PLC based auxiliary control
- A.C. auxiliaries enclosure
- D.C. engine interface enclosure

## Stand-alone or Parallel Operation

- Single or multi-set isolated bus operation
- Single set base load utility paralleling
- Isolated bus paralleling control
- Base load utility paralleling control

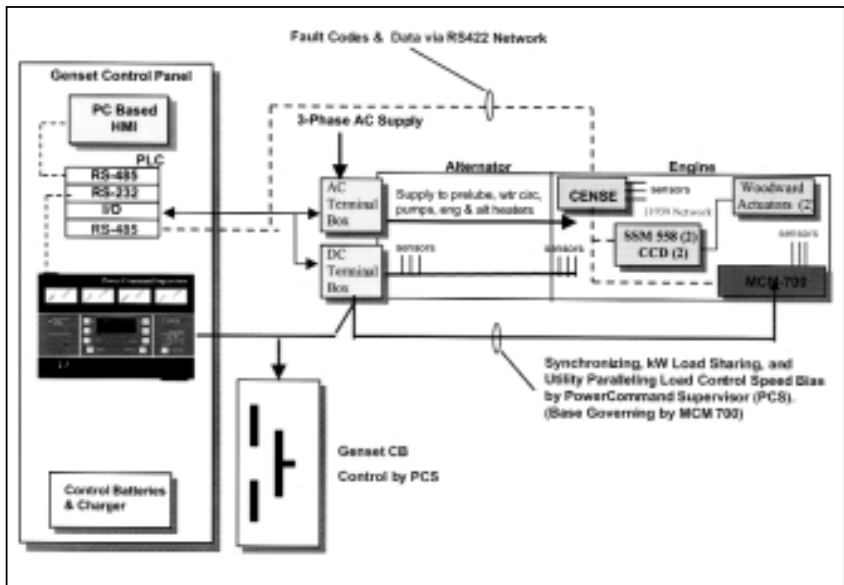
## H.M.I. (Touchscreen)

- Micro-processor based graphic interface (touchscreen)
- Layered menus for ease of operation

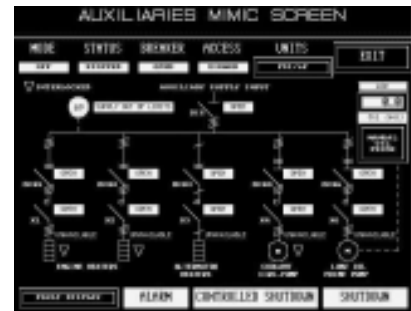
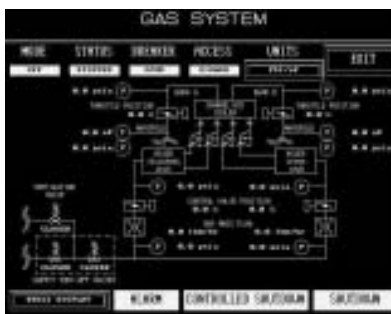
## System Screen



- Plant status
- Electrical data
- Mechanical data
- Test
- Access to other screens



## Plant Screens



## Other Screens

- Systems Data (restricted access)
- Engineers Data (restricted access)
  - all MCM700 data
- Fault Management Screens
  - reports and logs faults
  - summary/historical data
  - real time recording of faults



**GeneratorJoe**

4016 Quartz Drive  
 Santa Rosa, CA 95405  
 Phone: 707 539-9003  
 Fax: 707 539-5212  
 Email: sales@generatorjoe.NET  
 Web www.generatorjoe.NET

# Control System

## PowerCommand® Supervisor Control with AmpSentry™ Protection

- Integrated automatic voltage regulator. Speed/load bias to MCM700
- AmpSentry Protection guards the electrical integrity of the alternator and power system from the effects of overcurrent, over/under voltage, under frequency and overload conditions
- Control components designed to withstand the vibration levels typical in generator sets

### Standard Control Description

- Analog % of current meter (amps)
- Analog AC frequency meter
- Analog AC voltage meter
- Analog % of load meter (kW)
- Digital display panel
- Emergency stop switch
- Menu switch
- Panel backlighting
- Reset switch
- Run-Off-Auto switch
- Sealed front panel, gasketed door
- Self diagnostics
- Separate customer interconnection box
- Voltmeter/Ammeter phase selector switch



PCS PowerCommand Supervisor standard configuration

### Standard Performance Data

#### AC Alternator Data

- Current by Phase
- Kilowatts
- Kilowatt Hours
- Power Factor
- Voltage Line to Line
- Voltage Line to Neutral

#### Engine Data

- Battery Voltage (for electric start option)
- Coolant Temperature
- Engine Running Hours
- Engine Starts counter
- Oil Pressure
- RPM
- Oil Temperature

### EMC Compliance

The PCS control system meets EMC Shield Regulations.

### Standard Protection Functions

#### Warnings

- Analogue Sender Failure
- High DC Voltage
- EEPROM Failure
- Low DC Voltage
- Over Current

- Phase Rotation
- CB Fail to Close
- Live Bus
- Up to Four Customer Fault Inputs
- Weak Battery (electric start option)

#### Shutdowns

- EEPROM Failure
- Loss of Excitation
- Reverse Power
- Fail to Synchronise
- Magnetic Pickup Failure
- Underfrequency
- Overcurrent
- Overspeed
- Short Circuit
- Low AC Voltage
- High/Low AC Voltage

### Voltage Regulation

±0.5% with PowerCommand fitted.

### PLC Auxiliary Control

- Communication handling procedures
- Protocol interfaces
- Control of plant auxiliaries

### AC Auxiliaries Enclosure

- Incoming auxiliary a.c. supply for set
- Control/monitors/protects generator set a.c. systems not located in the GCP

### DC Engine Interface Enclosure

- Interfaces between GCP and genset

### Other Items

- Battery charger and batteries for GCP

## Technical Data

	Units	50 Hz	60 Hz	60 Hz
<b>Generator Set Data</b>				
Model		1160 GQKA	950 GQKA	1400 GQKA
Generator electrical output	kWe	1160	950	1400
Alternator voltage regulation		+/-1%	+/-1%	+/-1%
Alternator protection class		IP22	IP22	IP22
Alternator insulation/temperature rise		H/H	H/H	H/H
Starting air bottle recommended pressure	bar (G)	30-40	30-40	30-40
Electric starter voltage	V	24	24	24
Minimum battery capacity @ 20°C	Ah	720	720	720
<b>Engine Data</b>				
Engine Model		QSK60-G	QSK60-G	QSK60-G
Bore	mm	159	159	159
Stroke	mm	190	190	190
Capacity	litres	60.3	60.3	60.3
Configuration		16 V	16 V	16 V
Aspiration		TCA	TCA	TCA
Engine speed	rpm	1500	1200	1800
BMEP	bar (G)	16	16	16
Effective mechanical output with engine driven pumps	kW	1200	990	1460

COP rating in accordance with ISO 8528 and BS5514 at a maximum aspiration air temperature of 35°C, a maximum altitude of 500 metres above sea level and with the generator sets operating in parallel with the utility. No overload available.

For detailed technical data on the various engine versions available refer to the specific data sheet.



4016 Quartz Drive  
 Santa Rosa, CA 95405  
 Phone: 707 539-9003  
 Fax: 707 539-5212  
 Email: [sales@generatorjoe.NET](mailto:sales@generatorjoe.NET)  
 Web [www.generatorjoe.NET](http://www.generatorjoe.NET)

**GeneratorJoe**

# Optional Items

## Generator Set Options

### Engine

- Heavy duty air cleaner
- Sump drain pump
- Oil and water drain taps
- Automatic sump oil make-up valve
- Flexible engine connections
- CE Compliance (guarding)
- Exhaust temperature monitoring
- Tool kit
- 2/3rds TA Luft
- 24V electric starting
- Dual pneumatic/electric starting
- Air starting module

### Alternator

- 380-440 V, 3.3 kV, 6.3-6.6 kV, 11 kV-50 Hz
- 380-690V, 4-16 kV, 13.8 kV-60 Hz
- Left or right hand cable access
- 105°C rise alternator (LV machines only, standard on MV and HV)

### Fuel System

- Gas flow meter
- Pressure regulating valves
- Flexible connecting pipe

### Cooling

- 30°C ambient radiator
- 40°C ambient radiator
- Heat exchanger cooling (project specific)
- External electric pumps for engine cooling circuits complete with thermostats (project specific)

### Heat Recovery

- Water jacket heat exchangers
- Exhaust gas heat exchangers
- Exhaust gas boilers

### Exhaust System

- Industrial type silencer
- Residential type silencer
- Length of flexible exhaust and bellows

### Generator Set

- Weather protecting ISO style containers
- Silenced ISO style containers, 85 dB(A) at 1 metre

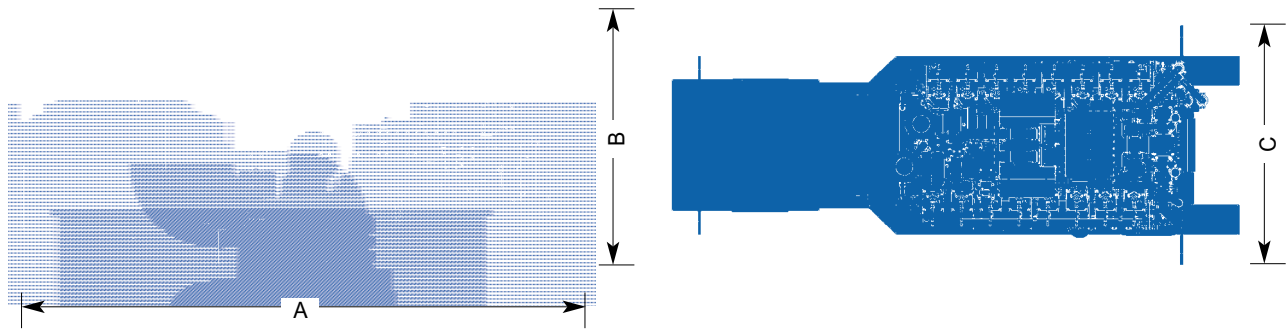
### Miscellaneous

- Flexible water, oil and air connections
- Duplex (running change) lubricating oil filters
- Crankcase breather filter

### Control Panel

- 3 or 4 pole circuit breaker (separate enclosures)
- CE Compliance
- Remote monitoring capabilities
- System control (master) panel

# Dimensions and Weights



	Dimensions and Weights (mm) (Approx.)			Set Weight kg Dry	Set Weight kg Wet
	A	B	C		
Without bed mounted radiator	4890	2240	2074	-	15500

Dimensions and weights are for **guidance** only. Do not use for installation design. Ask for certified drawings on your specific application. Specifications may change without notice.



## Power Generation

See your distributor for more information.



4016 Quartz Drive  
 Santa Rosa, CA 95405  
 Phone: 707 539-9003  
 Fax: 707 539-5212  
 Email: sales@generatorjoe.NET  
 Web www.generatorjoe.NET

# GeneratorJoe