



GeneratorJoe

4016 Quartz Drive
Santa Rosa, CA 95405
Phone: 707 539-9003
Fax: 707 539-5212
Email: sales@generatorjoe.NET
Web www.generatorjoe.NET

GSC300 CONFIGURATOR

***SOFTWARE
INTERFACE***

**Installation and User Manual for the
GSC300 Configurator PC Software Interface**

File: ConfiguratorRev1.5.2.doc
Feb.21, 2006

READ MANUAL BEFORE INSTALLING UNIT

END-USER AGREEMENT FOR GSC300 Configurator PC software.

GRANT OF RIGHTS

DynaGen Technologies grants you the following non-exclusive rights:

You may install and use the enclosed software product on your computer for reading and configuration of the GSC300 engine controller.

You may not reverse-engineer, decompile, or disassemble the software product, except and only to the extent that applicable law notwithstanding this limitation expressly permits such activity.

You may not rent or lease the software product.

LIMITATION OF LIABILITY

NO LIABILITY FOR CONSEQUENTIAL DAMAGES. To the maximum extent permitted by applicable law, in no event shall DynaGen Technologies or its suppliers be liable for any damages whatsoever (including, without limitation, damages for loss of business profit, business interruption, loss of business information, or any other pecuniary loss) arising out of the use of, or inability to use this software product.

We welcome your comments and suggestions. Please contact us at:



4016 Quartz Drive
Santa Rosa, CA 95405
Phone: 707 539-9003
Fax: 707 539-5212
Email: sales@generatorjoe.NET
Web www.generatorjoe.NET

Table of Contents

WELCOME	4
INSTALLING THE GSC300 SOFTWARE	4
Before you start.	
Minimum Hardware Requirements.	
Installing on Windows 98SE, 2000, ME, XP.	
CONNECTING YOUR GSC300 TO YOUR PC	6
USING THE GSC300 CONFIGURATOR PROGRAM	6
Starting the Configurator program.	
GSC300 Configuration using Configurator.	
Load a Default Configuration File.	
Load a User Defined Configuration File.	
Manually Enter a Configuration File.	
Reading Data from the GSC300.	
Saving a Configuration File to Disk.	
Set Port Address.	
Customize Display Messages.	
GSC300 PROGRAMMING USING CONFIGURATOR	10
Write data "as is" from a loaded configuration file.	
Write modified data from a loaded configuration file.	
Setting senders for input failures.	
CONFIGURABLE FEATURES OF THE GSC300	14
TROUBLESHOOTING GUIDELINES	16



GeneratorJoe

4016 Quartz Drive
 Santa Rosa, CA 95405
 Phone: 707 539-9003
 Fax: 707 539-5212
 Email: sales@generatorjoe.NET
 Web www.generatorjoe.NET

CONFIGURATOR SOFTWARE INSTRUCTIONS

Section 1 – Welcome

The DynaGen Configurator PC software interface is a program that allows the programming and customization of DynaGen GSC300 AutoStart Engine Controller. The GSC300 can be programmed manually via front panel buttons OR with our easy-to-use PC software interface that allows customization of messaging; languages; sender selections; control settings; and much more. Although the GSC300 may be easily configured for common parameters from the front panel buttons, using the Configurator PC software interface allows full and more advanced programming capabilities.

Section 2 – Installing the GSC300 Software

2.1 – Before you begin

In order to install and use the DynaGen software, you should have a basic understanding of how to use your computer. If you do not, we recommend that you ask someone who does to help you, or that you read the user manual that came with your computer.

If you encounter any problems or errors while installing the DynaGen Configurator software, please refer to Troubleshooting Guidelines On page16.

2.2 – Minimum Hardware Requirements

For the DynaGen Configurator software to work reliably and efficiently, your computer must meet or exceed the minimum requirements specified in the following table:

Operating System	Windows 98SE, 2000, ME, XP.
Processor	Pentium or equivalent processor
Memory	64 MB RAM
Hard Drive	20 MB Free Disk Space
Video card display	256 colors at 1024x768
Peripherals	CD-ROM Drive
Port	ECP Printer Port

2.3 – Installing on Windows 98SE, 2000, ME, XP.

1. Exit all open applications, close any open windows, and disable any virus protection software before installing the DynaGen Configurator software. (Consult the instructions that came with your virus protection software.) If you have a previous version of the Configurator installed on your PC then you should uninstall the current version before installing this one.
2. Insert the DynaGen Configurator CD into your CD-ROM drive. Wait a few seconds, the Configurator installation program should start automatically. If the installation doesn't start automatically, double click the my computer icon on your desktop, and then double-click the DynaGen Configurator icon. The Configurator installation program will start.
3. You are now presented with the main installation screen. Click the next button to install the Configurator software.
4. A process bar displays the Configurator software being copied to your hard drive. This may take several minutes depending on the speed of your computer and CD-ROM drive. You will also be asked to install two other modules required for operation. If you choose to not install one or more of the components then the Configurator will not operate as intended. Once Configurator is installed, you will need to restart your computer in order to start the DynaGen Configurator software. Remove the Configurator CD from your CD-ROM drive and then click OK on the dialog box asking you to restart.

You have successfully installed DynaGen GSC300 Configurator program. If you have encountered any problems or errors while installing the software, please refer to Troubleshooting Guidelines on page 16 or call DynaGen technical support Hot Line at 1-902-562-0133.



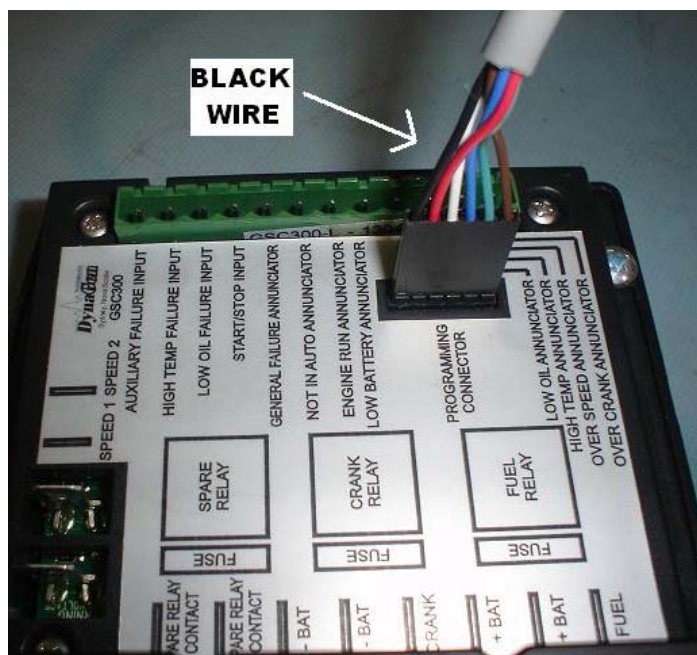
GeneratorJoe

4016 Quartz Drive
Santa Rosa, CA 95405
Phone: 707 539-9003
Fax: 707 539-5212
Email: sales@generatorjoe.NET
Web www.generatorjoe.NET

Section 3 – Connecting the GSC300 to your PC.

WARNING: NEVER CONNECT THE GSC300 PROGRAMMING CABLE INTO THE UNIT IF THE GSC300 IS POWERED ON.

The GSC300 can be easily connected to your PC for Reading, Configuration and programming. The GSC300 has a Programming Connector, which is identified on the labeling, that can be plugged into the supplied programming cable. This cable must be plugged into the parallel port of the PC. Only connect the GSC300 programming cable into the unit if the GSC300 is powered off, installing the cable with the controller power on may damage the GSC300. The GSC300 programming cable is meant to adapt directly to the parallel port. Please be advised that the parallel port must be free from any connectors or adapters, which may be plugged into it. With the programming cable connected to both the GSC300 and your computers parallel port, the controller is now ready for programming. Please contact DynaGen if additional cables or programming connectors are required.

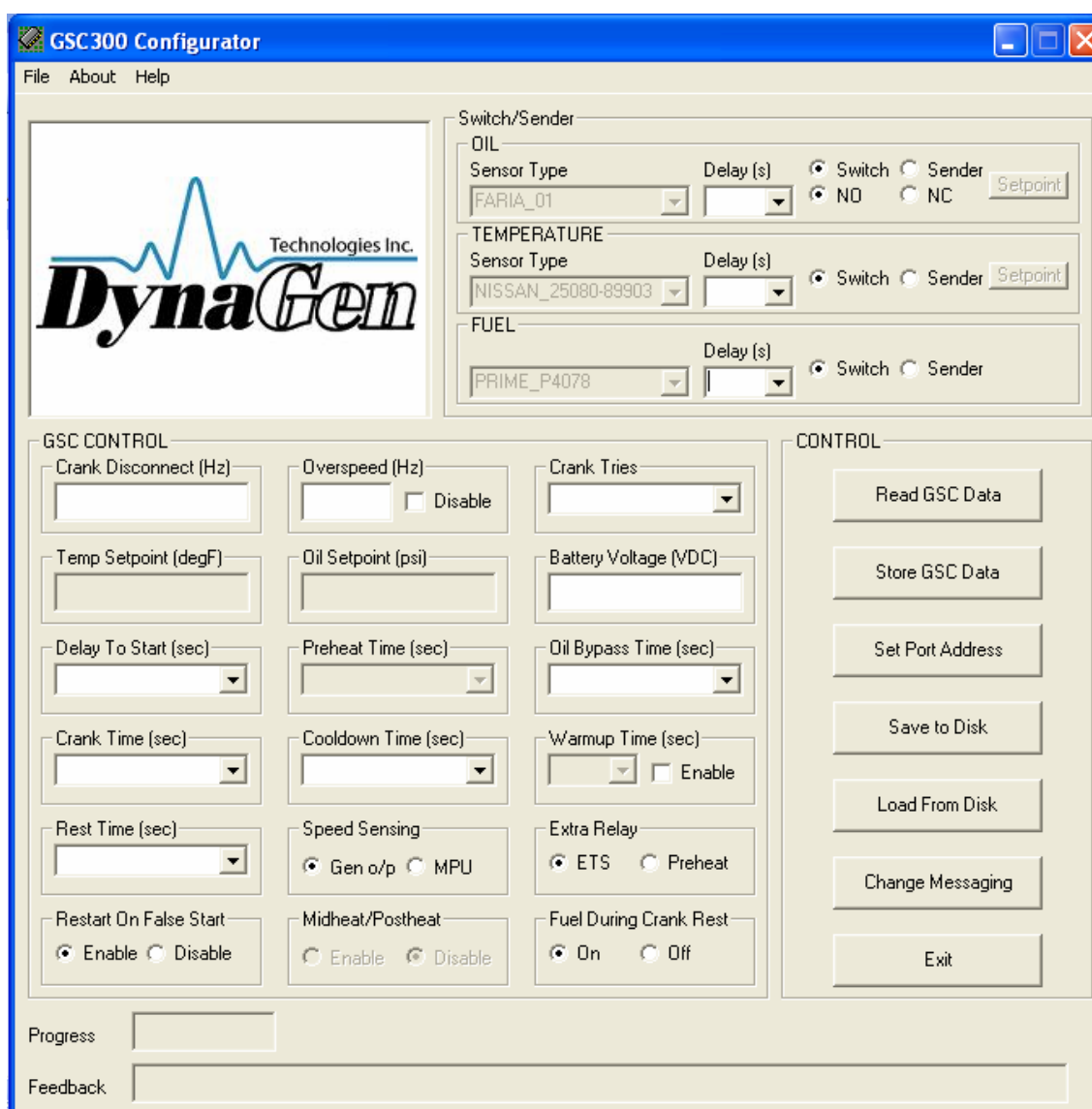


The programming cable must be inserted into the GSC300 with the black wire facing towards the center of the unit. The program will not function with an improper connector polarity.

Section 4 – Using the GSC300 Configurator Program.

4.1 – Starting the Configurator program

1. Click Start, Programs, DynaGen Technologies, then Configurator.
2. If there is a message stating that there was a problem with the parallel port, the user may have to choose the port address manually (see section 4.2.6 Set Port Address button feature on page 9).
3. You will now see the Configurator main screen window.



4.2 – GSC300 Configuration using Configurator

The Configurator main screen window gives the user many configuration options to program the GSC300. The user has the options to:

1. Load a Default Configuration File.
2. Load a User Defined Configuration File.
3. Manually enter Configuration Values.
4. Read Configuration From The GSC300.
5. Save a Configuration File to Disk.
6. Set Port Address.
7. Customize Display Messages.

4.2.1 – Load a Default Configuration File

This option is recommended for most users. To load a default configuration file consisting of default factory values, click on the Load From Disk features button on the main screen window. Being certain the “Load Default” Box is selected, click OK. The default factory values will now be loaded into the “GSC CONTROL” frame window. These configuration settings may be stored to the GSC as is, or they may be modified by the user before writing. To abort loading the configuration file, click cancel.

4.2.2– Load a User Defined Configuration File

To load a user defined configuration file (a configuration that the user saved to a file), click on the “Load From Disk” features button on the main screen window. Being certain the “Load Default” Box is not selected, choose the file from the location where it was previously saved, click OK. If the chosen file is a proper configuration file, the file will be loaded to the “GSC CONTROL” frame allowing it to be written to the GSC300. These configuration settings may be stored to the GSC as is, or the user before writing may modify them. If the chosen file was not a proper configuration file, a message “This is not a configuration file. Please choose another file.” Will be displayed in the text box at the bottom of the screen marked “Feedback.” To abort loading the configuration file, click cancel.

4.2.3– Manually entering Configuration settings

A user can manually enter their own personal setting preferences by simply entering their preferences into the proper data locations in the “GSC CONTROL” frame window. Once the values are entered, they may be wrote to the GSC by clicking the “Store GSC Data” features button on the main screen window.

4.2.4– Reading data from the GSC300.

The current configuration of the GSC300 may be read from the controller. This can be achieved by clicking on the “Read GSC Data” features button on the main screen window. If the GSC300 is connected properly to the PC the text boxes on the main screen within the “GSC CONTROL” frame will be loaded with the settings that was currently stored on the GSC300. The “Read GSC Data” features button allows for a complete data read, including previous saved sender types and associated values. The progress indicator will state “Settings successfully Read” to confirm proper reading. If there is an “Error Reading” popup message the data was not read properly, please refer to section 3 “Connecting the GSC300 to your PC” on page 6. These configuration settings may be modified by the user and stored back to the GSC by clicking the “Store GSC Data” features button on the main screen window.

4.2.5– Saving a configuration to disk.

Any user entered configuration values may be saved to a file, so that the user may easily configure the GSC at a later time. These vales can be saved to a configuration file by simply clicking the “Save to Disk” features button on the main screen window. In the save to disk dialog box, simply type your chosen name in the lower left location bar. The file may be saved to the location specified by the user. If the user does not chose a specific location to save the configuration file, it will be saved to the default directory were the software was installed. If saving to a floppy, make sure the device is in the proper drive with available space for copying.

*Please note there are certain files required by the program to operate. The files known as GSCConfig.ini, messages.ini and gauges.ini may not be overwritten with this option. It is critical that the user not modify these files.

4.2.6 - Set Port Address.

The Configurator program will automatically detect the parallel port address on installation. If a problem occurs with detecting the port when installing Configurator the user may need to choose the port address manually. The user may set or change the address of the LPT port by clicking the “set port address” features button on the main screen window. The user has the option to select their address from the drop down list or manually enter the address in the text box window. If entering the address in the text box, the user must enter it as it is seen in the device manager. This can be preformed in the Control Panel, by clicking on System, hardware, followed by the Device Manager button. If an operating system is being used other then Windows XP, the user will have a Device Manager tab on the System window. Once in the Device Manager, expand the Ports branch, Right click on the Printer Port and hit properties. Clicking the resources tab under the Resource settings box, there should be at least one I/O Range listed. The lower value under “Setting” is the value the user needs to choose as the address for the Port.

4.2.7 - Customize display messages

The user has the option to manually enter their own personal messages, which will be displayed, on the LCD screen. This can be achieved by clicking on the “Change messaging” features button on the main screen window. Once the change messaging dialog box appears simply enter the preferred messages into the proper custom message data locations. Clicking on the “Read” button will bring up the messages already stored in the GSC300. Once the values are entered or changed, they may be stored by clicking the “Store Messages” features button in the change messaging dialog box. The factory default messages can be restored by the user by simply highlighting the restore default messages check box. User customized messages can be saved for future use by clicking the “Save to Disk” features button in the change messaging dialog box. The user must choose a name for their customized file. Any saved user customized messages can be loaded by clicking on the “Load from Disk” features button in the change messaging dialog box.

4.3 – GSC300 Programming using Configurator

The Configurator main screen window gives the user many options to program the GSC300. The user has the options to:

1. Write data “as is” from a loaded configuration file.
2. Write modified data from a loaded configuration file.
3. Choosing senders for failure inputs.

4.3.1 – Write data “as is” from a loaded configuration file.

As explained in section 4.2 “GSC configuration using Configurator” values may be entered into the “GSC CONTROL” screen window by simply loading a default configuration or by using a user defined configuration file. If the user decides that the values are adequate for their application they may simply write these value to the GSC300 without any modifications. All the user has to do after they have loaded a configuration is click on the “Store GSC Data” features button on the main screen window. If there is a problem storing data to the GSC300, there will be an automatic “Write attempt”. The configurator will attempt to rewrite in a failed condition for a total of 3 times. The number of “write attempt” tries can be custom set for a minimum of 1 to a maximum of 10, found under the File menu. The programming status will be displayed on the status bar, in the bottom left corner of the main program window. The program will confirm programming success by displaying a “Finished Write” popup message.



GeneratorJoe

4016 Quartz Drive
 Santa Rosa, CA 95405
 Phone: 707 539-9003
 Fax: 707 539-5212

Email: sales@generatorjoe.NET
 Web www.generatorjoe.NET

4.3.2 – Write modified data from a loaded configuration file.

As explained in section 4.2 “GSC configuration using Configurator” values may be entered into the “GSC CONTROL” screen window by simply loading a default configuration or by using a user defined configuration file. If the user decides that the values are not adequate for their application they may modify these value before written to the GSC300. All the user has to do after they have loaded a configuration is simply change the values that they wish, either by the pull down menu associated with each value or enter the value manually. Once the modifications are complete, click on the “Store GSC Data” features button on the main screen window. If there is a problem storing data to the GSC300, there will be an automatic “Write attempt”. The configurator will attempt to rewrite in a failed condition for a total of 3 times. The number of “write attempt” tries can be custom set for a minimum of 1 to a maximum of 10, found under the File menu. The programming status will be displayed on the status bar, in the bottom left corner of the main program window. The program will confirm programming success by displaying a “Settings successfully WRITTEN to you GSC” popup message.



GeneratorJoe

4016 Quartz Drive
Santa Rosa, CA 95405
Phone: 707 539-9003
Fax: 707 539-5212
Email: sales@generatorjoe.NET
Web www.generatorjoe.NET

4.3.3 – Setting Senders For Input Failures.

The “Switch/Sender” screen window gives the user the option to choose how the GSC300 will recognize a low oil or high temperature failure. Failure values may be set for both low Oil and High Temperature levels by using the oil or temperature gauges themselves or choosing the values from a table, right from the “Switch/Sender” main window. If Fuel is chosen as a sender, there will be no requirement to choose the value point in the standard GSC300. The fuel as a sender would indicate the current level of fuel available. See a description of each sender below:

1. OIL:

The oil Switch or Sender option determines how the GSC300 will recognize an oil failure condition. In the oil section of the “Switch/Sender” window the user is faced with both Switch and Sender options. If the user chooses the switch option, the GSC will use the value setting directly from the gauge (see gauge manufactures instructions for proper value settings). When the switch option is selected either NO (normally open) or NC (normally closed) may be choosing. In an NO condition the switch contacts will be normally open when the oil pressure is good, and closed when pressure reach below the choosing set point. In an NC condition the switch contacts will be normally closed when the oil pressure is good, and opened when pressure reach below the choosing set point. If the user chooses the sender option, the GSC will use a value that the user specifies from a setpoint table. When choosing the Sender option, the user must select the type of gauge being used from the dropdown list. After the gauge type has been selected the user may select a failure value by simply clicking the “setpoint” features button. The “setpoint” button will bring up a table with the values to choose from. These values will be in PSI. The user is given the option of choosing between a 0.5 to 6 second time delay for oil pressure shutdown. After choosing the value that the GSC will recognize as a failure, click OK from the table window. Be advised that caution must be taken when choosing a failure value. Choosing a value that is too low would cause the GSC300 to never fail since the value of the sender would always be above the chosen failure set point. Choosing a value that is too high would cause the GSC300 to always fail since the value of the sender would always be below the chosen failure set point.



GeneratorJoe

4016 Quartz Drive
 Santa Rosa, CA 95405
 Phone: 707 539-9003
 Fax: 707 539-5212
 Email: sales@generatorjoe.NET
 Web www.generatorjoe.NET

2. Temperature:

The Temperature Switch or Sender option determines how the GSC300 will recognize a temperature failure condition. In the temperature section of the "Switch/Sender" window the user is faced with both Switch and Sender options. If the user chooses the switch option, the GSC will use the value setting directly from the gauge (see gauge manufactures instructions for proper value settings). If the user chooses the sender option, the GSC will use a value that the user specifies from a setpoint table. When choosing the Sender option, the user must select the type of gauge being used from the dropdown list. After the gauge type has been selected the user may select a failure value by simply clicking the "setpoint" features button. The "setpoint" button will bring up a table with the values to choose from. These values will be in degrees Fahrenheit. The user is given the option of choosing between a 0.5 to 6 second time delay for temperature shutdown. After choosing the value that the GSC will recognize as a failure, click OK from the table window. Be advised that caution must be taken when choosing a failure value. Choosing a value that is too low would cause the GSC300 to always fail since the value of the sender would always be above the chosen failure set point. Choosing a value that is too high would cause the GSC300 to never fail since the value of the sender would always be below the chosen failure set point.

3. FUEL:

The Fuel Switch or Sender option determines the level of fuel. When choosing the Sender option, the user must select the type of gauge being used from the dropdown list. When fuel is choosing as a sender it is used to indicate the current level of fuel available to the generator. Selecting Sender in the Fuel section of the "Switch/Sender" window does not require any settings or values in the standard GSC300. The GSC303 contains the options to set Low Fuel Shutdown of the engine, Low Fuel Pre-Alarm condition and a Fuel Overflow condition.



GeneratorJoe

4016 Quartz Drive
Santa Rosa, CA 95405
Phone: 707 539-9003
Fax: 707 539-5212
Email: sales@generatorjoe.NET
Web www.generatorjoe.NET

Configurable Features of the GSC300

Features	Description
Crank Disconnect	This is the frequency at which the GSC300 will disengage the crank, keeping the fuel on to run the generator.
Over-Speed	This is the frequency when the GSC300 will shutdown the generator and indicate a failure.
High Temp Setpoint	This is the value when the GSC300 will shutdown the generator and indicate a high temperature failure.
Low Oil Setpoint	This is the value when the GSC300 will shutdown the generator and indicate a low oil pressure failure.
Delay to Start	This is a time in seconds that the GSC300 will wait before starting the generator.
Preheat Time	This is the time in seconds that the GSC300 will turn on the Extra relay, in order to preheat the generator. It is required that this option be enabled in order to be used. If this option is chosen, Warm-up or Energize to Stop (ETS) will not be available.
Battery Voltage	This is the value in Volts that the GSC300 will alarm a low battery level. This will not shut the generator down and will not generate a failure.
Crank Tries	This value is the number of attempts the GSC300 will crank over the generator.
Crank Time	This is the time in seconds the GSC300 will continue to crank over the generator.
Oil Bypass Time	This is the time in seconds the GSC300 will wait before checking to see if the Oil Pressure has reached a desirable level.
Cool-Down Time	This is the time in seconds the GSC300 will wait before shutting the generator down in order to allow sufficient cool down.
Warm-Up Time	This is the time in seconds the generator will keep the Extra relay off in order to allow the generator sufficient time to warm up. The extra relay would be used to turn on a load in this case. This option must be enable in order to be used. If this option is chosen, Preheat and ETS will not be available. Please note that this function will be activated after the Oil Bypass Time has expired.
Rest Time	This is the time in seconds the GSC300 will wait before attempting to turn the crank on for another crank attempt.
Speed Sensing	There are two types of speed sensing available to the GSC300. If Gen O/P is choosing then the speed detected is coming from the output of the generator. This will be a frequency range of 0-99 Hz. If MPU (Magnetic Pickup) is choosing, the speed detected is coming from the flywheel and is a frequency as high as 9000Hz. If MPU is chosen the frequency will not be displayed on the LCD.

Features	Description
Extra Relay	If ETS is chosen the extra relay will be used as an Energize to Stop output. If preheat is chosen the extra relay will be used as a preheat output that will turn on for the user selected time before generator cranking.
Fuel During Crank Rest	If ON is choosing then the fuel output will be left on during crank rest time.
Restart on False Start	If this option is enabled when the engine goes into failure before the oil bypass time has passed, the GSC300 will re-attempt to start the generator.
Post-Heat	If this option is enabled then the extra relay will turn on for 7 seconds after the generator is up to its running speed. A mid-heat option is also automatically combined with post-heat which will be enabled during cranking.



GeneratorJoe

4016 Quartz Drive
 Santa Rosa, CA 95405
 Phone: 707 539-9003
 Fax: 707 539-5212
 Email: sales@generatorjoe.NET
 Web www.generatorjoe.NET

TROUBLESHOOTING GUIDELINES

TROUBLE	POSSIBLE CAUSE	SUGGESTED ACTION
Message stating, "value was left blank".	Writing to the GSC300 with one of the value boxes in the "GSC CONTROL" left empty.	Enter an appropriate value.
Message stating that values doesn't make sense.	Writing to the GSC300 with a value that doesn't make sense. Ex.-Crank Disconnect value larger than Over-speed.	Enter an appropriate value.
Message stating, "Need to choose set point".	Writing to the GSC300 with senders, but no set point chosen.	Enter an appropriate set point value.
Computer locks or stalls during program installation.	A conflict with another program currently running on your computer.	Exit all open applications, close any open windows, and disable any virus protection software.
Program Installation does not start automatically when CD is placed in drive.	A problem with the auto-start feature.	Double click the my computer icon on your desktop, and then double-click the DynaGen Configurator icon.
After installing Configurator the program will not start.	The user needs to restart the computer	Go to the start menu, followed by shutdown, Restart the computer
Problem detecting computers parallel port during installation.	Program not automatically detecting port address.	Choose the port address manually by clicking the "set port address" features button. See section 4.2.6
Message stating "This is not a configuration file".	Chosen file was not a proper configuration file.	Open a proper saved configuration file.
When reading the GSC300 a popup message stating "Error Reading" appears.	The GSC300 may not be properly connected to the PC	Make sure the GSC300 is properly connected to the parallel port with the supplied cable. See section 3.
Message stating, "Disk is full" when saving configuration files to disk.	Trying to save to a CD Rom or disk that is full.	Deleting files from the disk or using a disk with sufficient space.



GeneratorJoe

4016 Quartz Drive
 Santa Rosa, CA 95405
 Phone: 707 539-9003
 Fax: 707 539-5212
 Email: sales@generatorjoe.NET
 Web www.generatorjoe.NET

TROUBLE	POSSIBLE CAUSE	SUGGESTED ACTION
Message stating, "Device is not ready" when saving configuration files to disk.	Trying to save to a CD Rom or disk that is not present.	Make sure a disk is placed in the proper drive.
Constant Low oil failures.	<ul style="list-style-type: none"> • Low oil level • Choosing the sender setting value to high, causing the GSC300 to always fail since the value of the sender is always below the chosen failure set point. 	<ul style="list-style-type: none"> • Add oil • Choose a lower sender failure set point.
Constant Temperature failures.	<ul style="list-style-type: none"> • Low coolant level • Choosing the sender setting value to low, causing the GSC300 to always fail since the value of the sender is always above the chosen failure set point. 	<ul style="list-style-type: none"> • Add coolant • Choose a higher sender failure set point.



GeneratorJoe

4016 Quartz Drive
 Santa Rosa, CA 95405
 Phone: 707 539-9003
 Fax: 707 539-5212
 Email: sales@generatorjoe.NET
 Web www.generatorjoe.NET