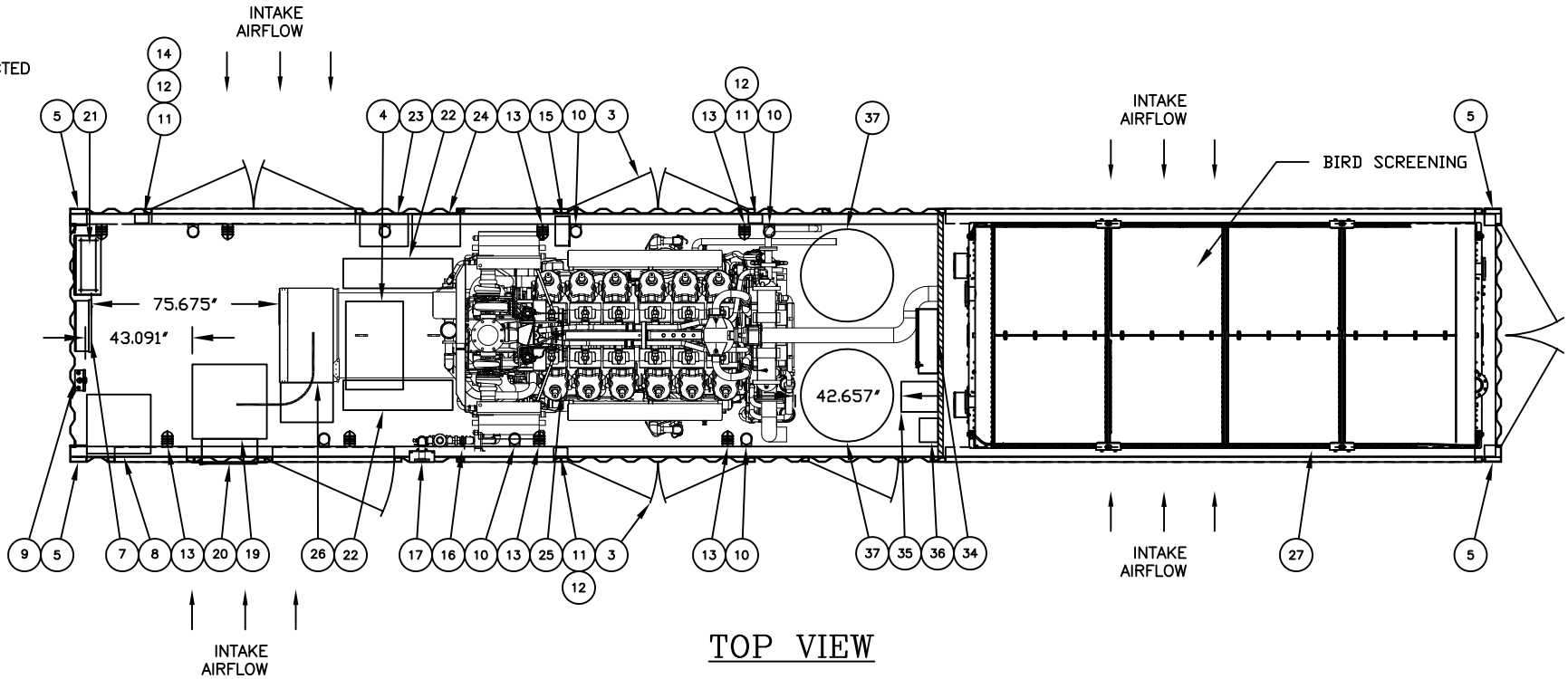


NOTES:
AIRFLOW REQUIREMENTS
HEAT REJECTION AIRFLOW - 59,305 CFM
COMBUSTION AIRFLOW - 2,493 CFM
TOTAL AIRFLOW - 61,798 CFM

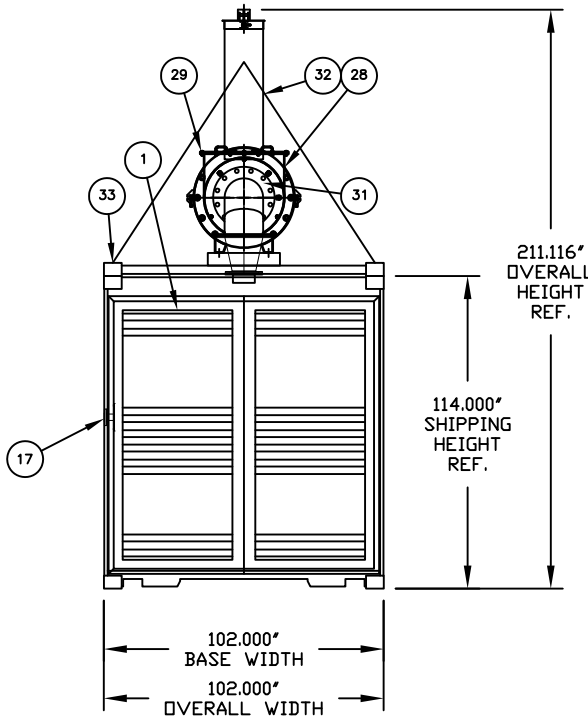
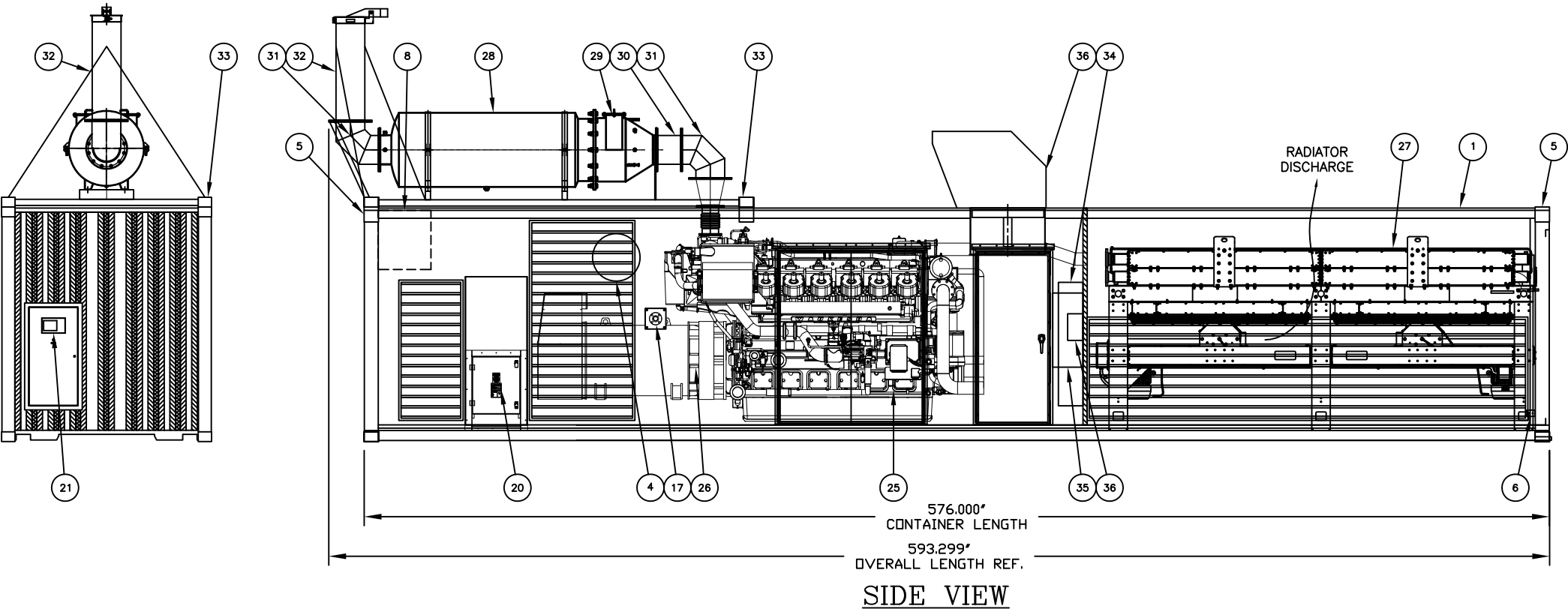
CONTROL PANEL REMOTE MOUNTED

CONTAINER TO BE CERTIFIABLE FOR SEA SHIPMENT

ESTIMATED WEIGHTS AND SHIPPING DIMENSIONS
ARE APPROXIMATE AND SHOULD NOT BE USED
FOR FINAL FREIGHT ARRANGEMENTS. PLEASE
CONTACT THE 3PI FACTORY FOR AS-CONSTRUCTED
WEIGHTS AND SHIPPING DIMENSIONS PRIOR TO
MAKING FINAL FREIGHT ARRANGEMENTS.



BILL OF MATERIAL				DESCRIPTION
D.P.	S.L.	ITEM	QTY	
		1	1	HIGH CUBE ISO CONTAINER - STEEL CONSTRUCTION
		2	1	PERSONNEL ACCESS DOOR - 36"W X 84"H
		3	2	PERSONNEL ACCESS DOOR - 72"W X 84"H
		4	1	55 GAL. LUBE OIL MAKE-UP TANK
		5	4	LIFTING PROVISIONS - NON REMOVABLE
		6	2	GROUND PAD
		7	1	LOAD CENTER 208/120V 3P4W 100A
		8	1	30KVA TRANSFORMER
		9	1	TRANSFORMER DISCONNECT
		10	8	AC LIGHT FIXTURE - LED
		11	3	LIGHT SWITCH
		12	3	GFCI DUPLEX RECEPTACLE
		13	6	DC LIGHT FIXTURE
		14	1	TIMER SWITCH - 60 MIN FOR DC LIGHTING
		15	1	AUXILIARY BOX
		16	1	NATURAL GAS TRAIN
		17	1	NATURAL GAS INLET, ANSI FLANGE
		18	1	---
		19	1	2000A CIRCUIT BREAKER
		20	1	GENERATOR OUTPUT CONNECTION BOX
		21	1	ENGINE I/O AND GENERATOR CONTROL PANEL
		22	1	ENGINE STARTING BATTERY SET - 4 8D CELLS W/ SPILL CONTAINMENT
		23	2	BATTERY CHARGER
		24	1	BEST BATTERY SELECTOR, BBS-4800
		25	1	L7044GSI ENGINE
		26	1	MARATHON GENERATOR
		27	1	RADIATOR
X		28	1	EXHAUST SILENCER
X		29	1	EXHAUST CATALYST
X		30	1	EXHAUST FLEX - STAINLESS
X		31	2	EXHAUST ELBOW
X		32	1	4' EXHAUST STACK W/ RAINCAP
X		33	1	SILENCER SUPPORT FRAME
		34	1	MCC
		35	1	RADIATOR VARIABLE FREQUENCY DRIVE
		36	1	GENSET VENTILATION FAN VARIABLE FREQUENCY DRIVE
		37	2	GENSET VENTILATION FAN WITH WEATHER HOOD
D.P. - ITEMS PROVIDED BY DEALER TO PPPI				
S.L. - ITEMS SHIPPED LOOSE				



SUBMITTED FOR APPROVAL	
04/11/2016	
APPROVED: _____	
DATE: _____	
APPROXIMATE SHIPPING DIMENSIONS:	
LENGTH:	OVERALL LENGTH: 576 IN
WIDTH:	INCLUDING LIFTING POINTS: 102 IN
	ENCLOSURE AND BASE: 102 IN
	(INCLUDING DOOR HANDLES)
HEIGHT:	HIGHEST POINT: 114 IN
	(INCLUDING ROOF EXHAUST COLLAR)
FINISH COLOR	
ROOF:	TBD
ENCLOSURE:	TBD
BASE:	BLACK
EST. CONTAINER WEIGHT:	13,550 LBS
EST. GENSET WEIGHT:	31,700 LBS
EST. RADIATOR WEIGHT:	10,350 LBS
EST. MISC. WEIGHT:	3,150 LBS
EST. SHIPPING WEIGHT:	58,750 LBS
EST. WET WEIGHT:	62,750 LBS
APPROXIMATE OVERALL DIMENSIONS	
LENGTH:	594 IN
WIDTH:	109 IN
HEIGHT:	212 IN
MAIN TANK CAPACITY:	N/A GAL.
RUPTURE BASIN CAPACITY:	110% N/A GAL.

--	--	--	--	--	--	--	--	--	--
--	--	--	--	--	--	--	--	--	--
--	--	--	--	--	--	--	--	--	--
--	--	--	--	--	--	--	--	--	--
--	--	--	--	--	--	--	--	--	--
--	--	--	--	--	--	--	--	--	--
--	--	--	--	--	--	--	--	--	--
ZONE	REV	DESCRIPTION				BY	DATE	ZONE	REV

GeneratorJoe 1200 kW GenSet
Natural Gas Powered

CUSTOMER	---	PRJ #	---	QTE #	---
PROJECT	---	CST.PRJ#	---	PO #	---
TITLE	ISO ENCLOSURE	DRAWN	CJM	DATE	3/21/16
	1200KW 7044 GENSET	CHECKED	---	DATE	---
	GENERAL ARRANGEMENT	SCALE	1: 70	SHEET	01/01
	---	DRAWING NO.	WAUKESHA 48' CONTAINER_D	REV.	-
	---	THIS DRAWING IS THE PROPERTY OF PROFESSIONAL POWER PRODUCTS, INC., DARIEN, IL. IT IS NOT TO BE REPRODUCED WITHOUT PRIOR AUTHORIZATION FROM SAID COMPANY.			