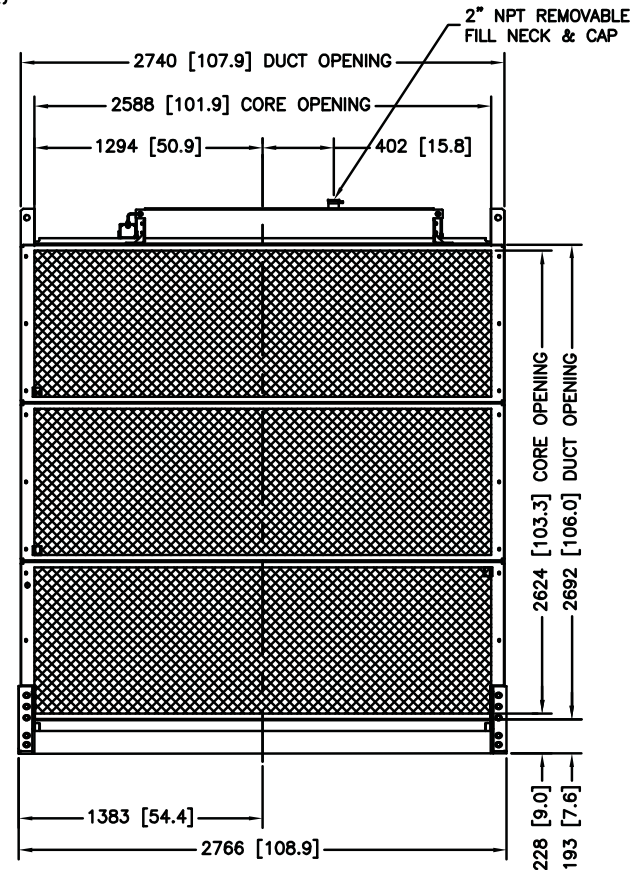
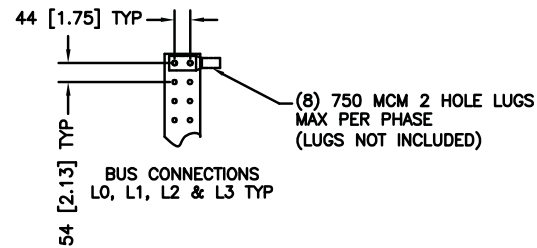


INSTALLATION NOTE
IF SUBBASE FUEL TANK AND/OR SOUND HOUSING IS USED, REFER TO SUBBASE FUEL TANK ADV TO DETERMINE MOUNTING LOCATIONS.

INSTALLATION NOTE
IF IBC CERTIFICATION IS REQUIRED SEE SEISMIC ADV FOR INSTALLATION INSTRUCTIONS



REV	DATE	REVISION	BY
-	6-14-11	NEW DRAWING [91724-6]	DJV

1250/1500 KW ALTERNATOR FRAME SIZE					
7M4048, 7M4050		7M4052, 7M4174 7M4290, 7M4368 7M4370		7M4176	
A	6035 [237.6]	6200 [244.1]	6366 [250.6]	6476 [255.0]	
B	6144 [241.9]	6311 [248.5]	6476 [255.0]	1041 [41.0]	
C	660.4 [26.0]	1041 [41.0]	1041 [41.0]	2157 [84.9]	
D	1825 [71.86]	1992 [78.4]	2032 [80.0]		
E	1700 [67.0]	1867 [73.5]			

△ WHEN SUBBASE TANK IS USED, CONDUIT LOCATION SHOULD BE ALTERED ACCORDINGLY, OR IN STUB-UP AREA FOR SUBBASE TANK. REFER TO SUBBASE ADV.

NOTE:
MAX. WET WEIGHT OF GENSET:
LESS ACCESSORIES:
14,515 KG [32,000 LBS]

METRIC CAD FILE

NOTE: DIMENSIONS IN [] ARE INCH EQUIVALENTS.

1250 MODEL 50/60 HZ
7M4048
1500 MODEL 50/60 HZ
7M4050, 7M4052, 7M4174, 7M4176, 7M4290, 7M4368, 7M4370
RECONNECTABLE, 380V, 600V, 3300V, 4160V ALTERNATORS
50C COOLING SYSTEM
SERIES 4000, TIER II

KOHLER CO.
POWER SYSTEMS, KOHLER, WI 53044 U.S.A.
THIS DRAWING IN DESIGN AND DETAIL IS KOHLER CO. PROPERTY AND
MAY NOT BE USED WITHOUT THE WRITTEN PERMISSION OF KOHLER CO. WORK
ALL RIGHTS OF DESIGN OR INVENTION ARE RESERVED.

DIMENSION PRINT
1250/1500 KW SERIES 4000
ADV-8413

APPROVED	DATE
DJV	6-14-11
DJV	6-14-11
JQZ	6-14-11

