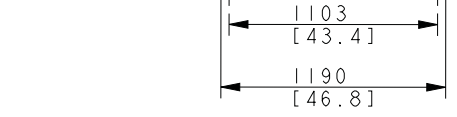
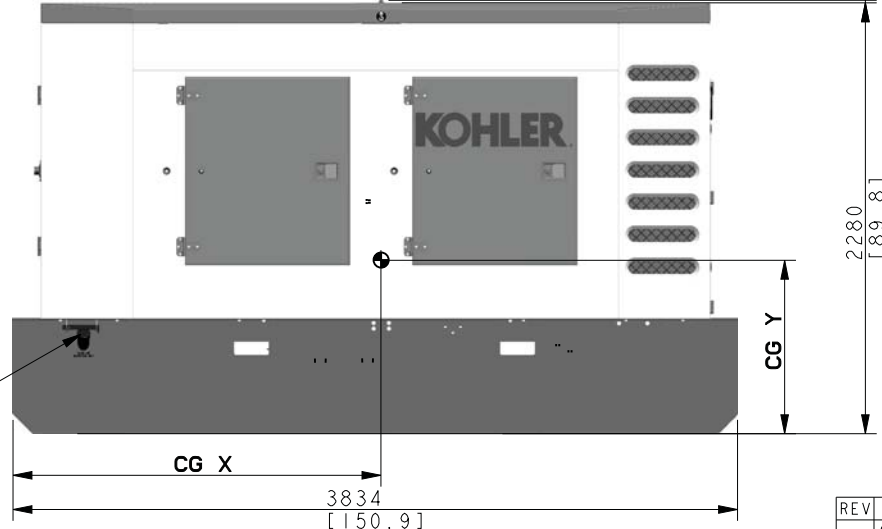
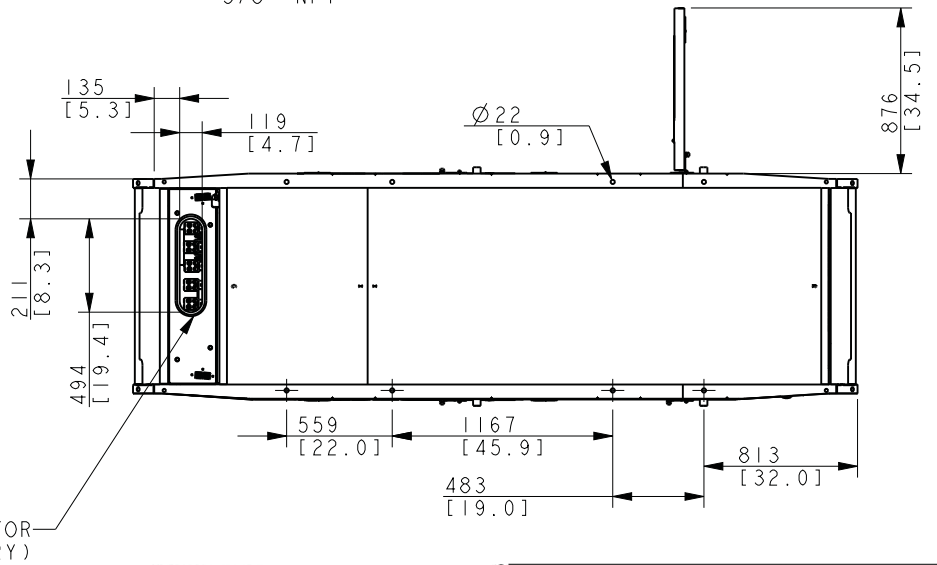
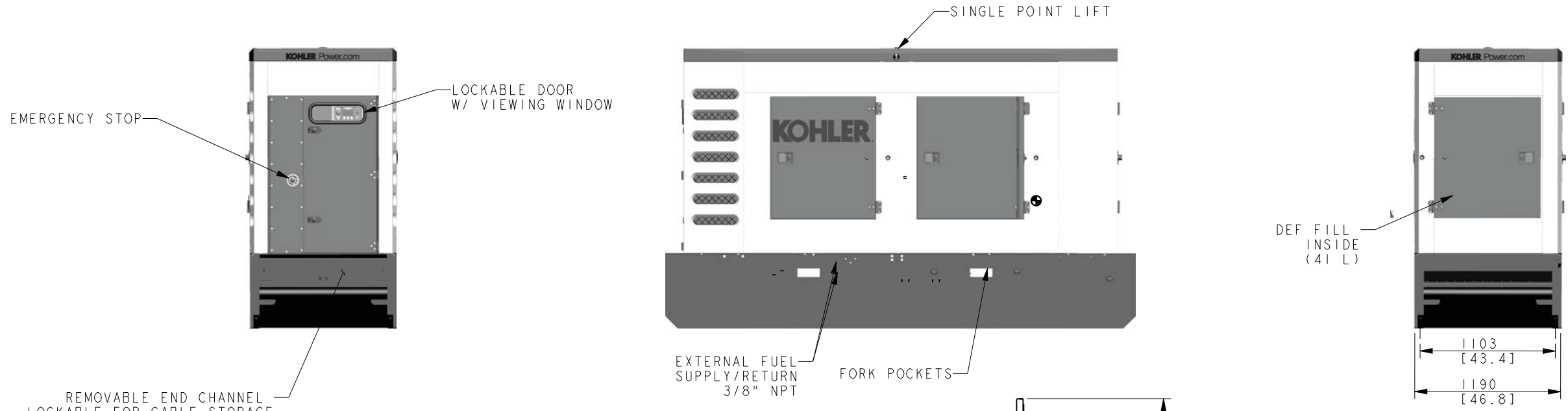


CENTER OF GRAVITY DIMENSIONS			WEIGHT DRY KG [LBS]	WEIGHT WET KG [LBS]
MODEL	CG X (IN)	CG Y (IN)		
125 REOZJ4	1813 [71.4]	894 [35.2]	3500 [7715]	3567 [7865]
150 REOZJ4	1816 [71.5]	894 [35.2]	3538 [7800]	3606 [7950]



CONDUIT ENTRY AREA FOR GENERATOR LOAD LEADS (BOTTOM ENTRY)

WET WEIGHT INCLUDES ENGINE FLUIDS, EXCLUDING FUEL AND DEF WEIGHT. DIMENSIONS IN [] ARE ENGLISH EQUIVALENTS

FIELD DRAGGABLE
125/150 REOZJ4

REV	DATE	ON COMPOSITE DWGS. SEE PART NO. FOR REVISION LEVEL	BY	UNLESS OTHERWISE SPECIFIED - 1) DIMENSIONS ARE IN MILLIMETERS 2) TOLERANCES ARE:
-	06-06-14	NEW DRAWING [CT78083]	KNN	X.XX ± X.X ± X ANGLES ±
A	1-6-15	(A-1) DIMENSION PRINT, 125-150 REOZJ4 WAS DIMENSION PRINT, 130-155 REOZK4; (D-8,A-4) 125 REOZJ4 WAS 130 REOZK4, 150 REOZJ4 WAS 155 REOZK4 [CT102383]	PRM	THIRD ANGLE PROJECTION
B	5-14-15	(D-4, D-7) VIEW UPDATED [CT113441]	KNN	APPROVALS DATE
				DRAWN KNN 06-06-14
				CHECKED DJV 06-06-14
				APPROVED WDG 06-06-14

KOHLER CO. METRIC PRO-E
POWER SYSTEMS, KOHLER, WI 53044 U.S.A.
THIS DRAWING IN DESIGN AND DETAIL IS KOHLER CO. PROPERTY AND MUST NOT BE USED EXCEPT IN CONNECTION WITH KOHLER CO. WORK. ALL RIGHTS OF DESIGN OR INVENTION ARE RESERVED.

TITLE: **DIMENSION PRINT, 125-150 REOZJ4**

SCALE 0.05 CAD NO. SHEET 1 of 2
DWG NO. **ADV-8722** **D**

