

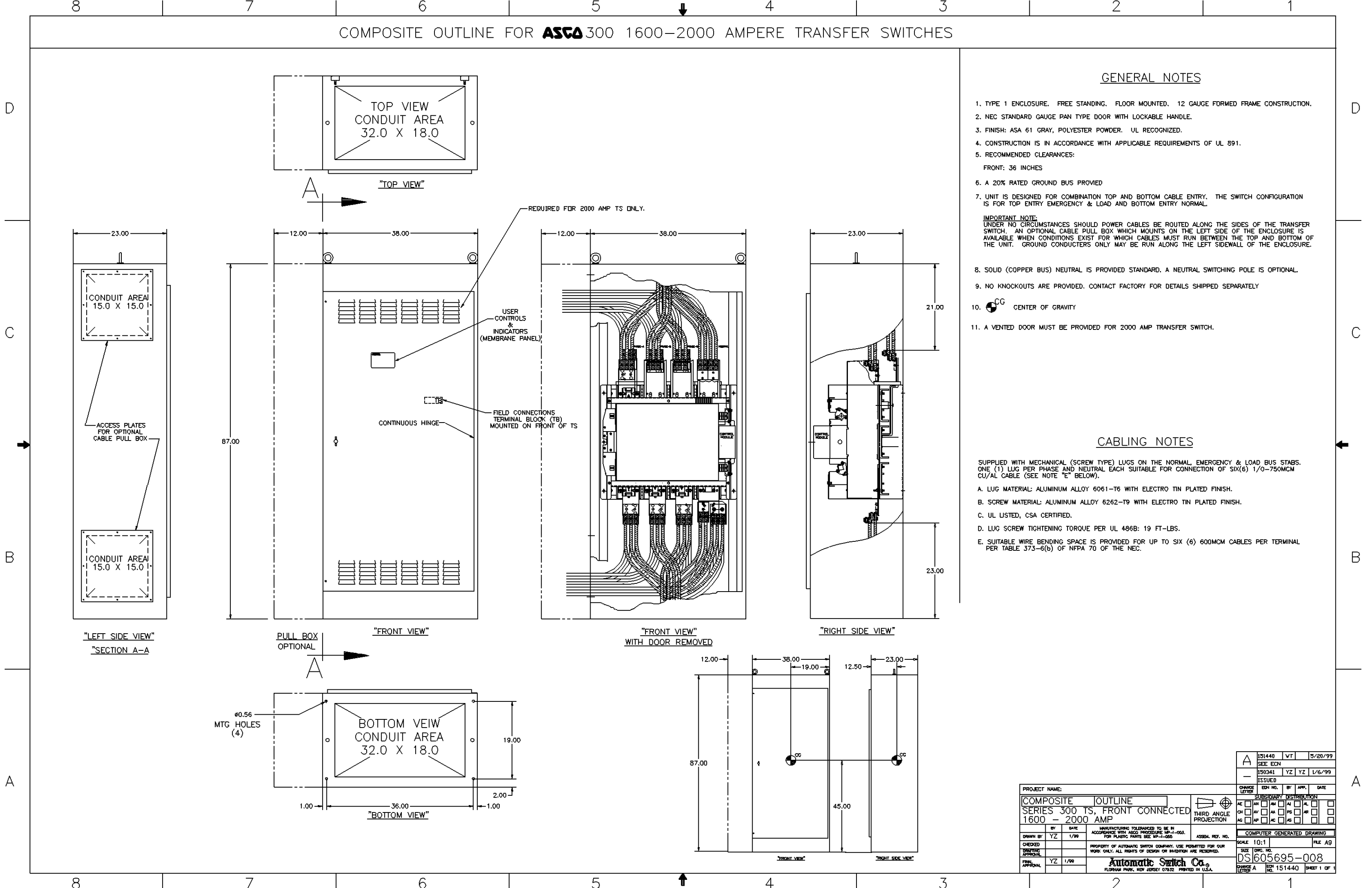
COMPOSITE OUTLINE FOR **ASCO** 300 1600-2000 AMPERE TRANSFER SWITCHES

GENERAL NOTES

- TYPE 1 ENCLOSURE. FREE STANDING. FLOOR MOUNTED. 12 GAUGE FORMED FRAME CONSTRUCTION.
- NEC STANDARD GAUGE PAN TYPE DOOR WITH LOCKABLE HANDLE.
- FINISH: ASA 61 GRAY, POLYESTER POWDER. UL RECOGNIZED.
- CONSTRUCTION IS IN ACCORDANCE WITH APPLICABLE REQUIREMENTS OF UL 891.
- RECOMMENDED CLEARANCES:
FRONT: 36 INCHES
- A 20% RATED GROUND BUS PROVIDED
- UNIT IS DESIGNED FOR COMBINATION TOP AND BOTTOM CABLE ENTRY. THE SWITCH CONFIGURATION IS FOR TOP ENTRY EMERGENCY & LOAD AND BOTTOM ENTRY NORMAL.
IMPORTANT NOTE:
UNDER NO CIRCUMSTANCES SHOULD POWER CABLES BE ROUTED ALONG THE SIDES OF THE TRANSFER SWITCH. AN OPTIONAL CABLE PULL BOX WHICH MOUNTS ON THE LEFT SIDE OF THE ENCLOSURE IS AVAILABLE WHEN CONDITIONS EXIST FOR WHICH CABLES MUST RUN BETWEEN THE TOP AND BOTTOM OF THE UNIT. GROUND CONDUCTORS ONLY MAY BE RUN ALONG THE LEFT SIDEWALL OF THE ENCLOSURE.
- SOLID (COPPER BUS) NEUTRAL IS PROVIDED STANDARD. A NEUTRAL SWITCHING POLE IS OPTIONAL.
- NO KNOCKOUTS ARE PROVIDED. CONTACT FACTORY FOR DETAILS SHIPPED SEPARATELY
- CENTER OF GRAVITY
- A VENTED DOOR MUST BE PROVIDED FOR 2000 AMP TRANSFER SWITCH.

CABLING NOTES

- SUPPLIED WITH MECHANICAL (SCREW TYPE) LUGS ON THE NORMAL, EMERGENCY & LOAD BUS STABS. ONE (1) LUG PER PHASE AND NEUTRAL EACH SUITABLE FOR CONNECTION OF SIX(6) 1/0-750MCM CU/AL CABLE (SEE NOTE "E" BELOW).
- LUG MATERIAL: ALUMINUM ALLOY 6061-T6 WITH ELECTRO TIN PLATED FINISH.
 - SCREW MATERIAL: ALUMINUM ALLOY 6262-T9 WITH ELECTRO TIN PLATED FINISH.
 - UL LISTED, CSA CERTIFIED.
 - LUG SCREW TIGHTENING TORQUE PER UL 486B: 19 FT-LBS.
 - SUITABLE WIRE BENDING SPACE IS PROVIDED FOR UP TO SIX (6) 600MCM CABLES PER TERMINAL PER TABLE 373-6(b) OF NFPA 70 OF THE NEC.



PROJECT NAME:		151440		WT	5/20/99
COMPOSITE OUTLINE		150341		YZ	YZ
SERIES 300 TS, FRONT CONNECTED		150341		YZ	YZ
1600 - 2000 AMP		150341		YZ	YZ
DRAWN BY: YZ		DATE: 1/99		ISSUED	
CHECKED:		DATE:		ISSUED	
DRAWING APPROVAL:		DATE:		ISSUED	
FINAL APPROVAL:		DATE:		ISSUED	
PROPERTY OF AUTOMATIC SWITCH COMPANY. USE PERMITTED FOR OUR WORK ONLY. ALL RIGHTS OF DESIGN OR INVENTION ARE RESERVED.		SCALE: 10:1		FILE A9	
Automatic Switch Co.		SIZE: 11x17		DWG. NO. DS605695-008	
FLORHAM PARK, NEW JERSEY 07832 PRINTED IN U.S.A.		CHANGE LETTER A		EQU. NO. 151440 SHEET 1 OF 1	