

POWER TRANSFER

**MODEL # ES3030G OR
ES 3030I**
120VAC 50 AMPS/POLE



AUTOMATIC TRANSFER

- AUTOMATICALLY SWITCHES FROM POWER CORD TO GENERATOR (ES3030G) OR INVERTER (ES3030I)
- HEAVY DUTY RELAYS WILL HANDLE LOADS OF UP TO 6KW
- ES3030I HAS SPECIAL CONTROL CIRCUIT TO SHED LOADS WHEN ON INVERTER POWER
- ES3030I WORKS WITH INVERTERS AS WELL AS ES3030G, ES30, AND ES50M-65N TRANSFER SWITCHES. THIS ALLOWS FOR A VARIETY OF APPLICATIONS
- BUILT-IN TIME DELAY ALLOWS GENERATOR TO GET UP TO SPEED ON THE ES3030G
- QUICK AND EASY INSTALLATION



GeneratorJoe

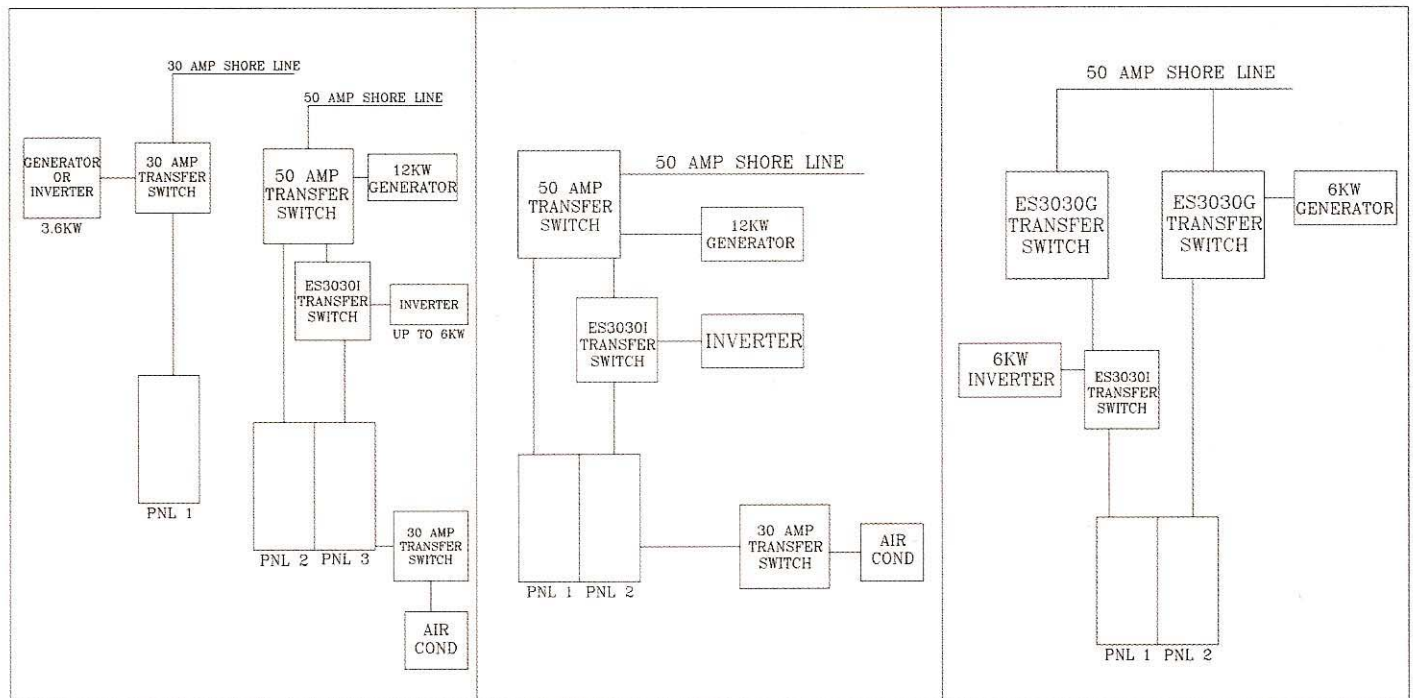
4016 Quartz Drive
Santa Rosa, CA 95405
Phone: 707 539-9003
Fax: 707 539-5212
Email: sales@generatorjoe.NET
Web www.generatorjoe.NET

The ES3030I is intended for usage as an electrical transfer switch to automatically switch from the main power source (i.e. shoreline) to inverter.

The ES3030G is intended for usage as an electrical transfer switch to automatically switch from the main power source (i.e. shoreline) to generator power.

MUST BE USED WITH A CIRCUIT DISTRIBUTION PANEL HAVING A MAIN BREAKER RATED 1 POLE, 50 AMPS, OR LESS

APPLICATIONS



RELAYS: General purpose DPDT 120 VAC, 50 AMPS

COIL: 110VAC 60HZ

TIME DELAY: ON ES3030G ONLY, thermal time delay 120VAC, 20-40 seconds

CONTROL CIRCUIT: USD 3AMP fused 120VAC Circuit

KNOCKOUTS: Assorted

PHYSICAL SIZE: 8" x 8" x 4" Type NEMA 1

WEIGHT: 6.25 lbs

CAUTIONS :

- ** INSTALL VERTICALLY OR HORIZONTALLY IN A DRY, ACCESSIBLE AREA
- ** DO NOT DRILL METAL CASE, IT VOIDS ETL LISTING.
- ** KEEP COVERED EXCEPT DURING WIRING AS CONTACTORS ARE SENSITIVE TO DUST AND DEBRIS.
- ** WHEN HI-POTTING COACH, DISCONNECT ES3030G OR HI-POT ON LOAD SIDE OF SWITCH. THIS UNIT HAS BEEN HI-POTTED TO UL STANDARDS AT THE FACTORY.

WARRANTY: Elkhart Supply Corporation warrants that this product shall be free from defects in material and workmanship for one year (twelve months) from date of purchase or eighteen months after date of manufacture, whichever is less. If, after our inspection, a defect is revealed, the unit will be repaired and returned, at our discretion. We will accept up to 1/2 hour (30 minutes) labor for the unit to be changed out or \$18.00, whichever is less. This warranty shall not apply to any product that shows evidence of neglect, misuse, or misinstallation, or that has been repaired or altered by any other party other than this company. Proof of purchase may be required.