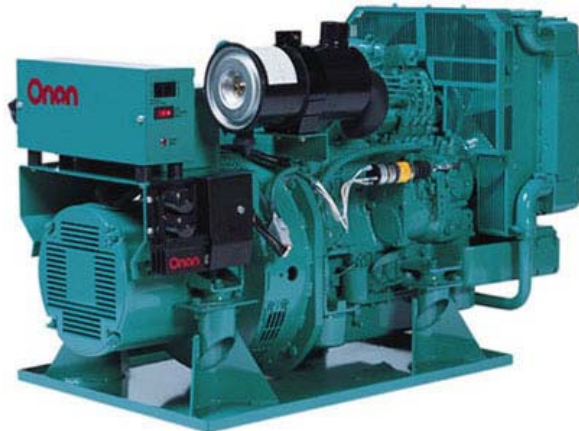


CMSD 8.0/10.0 GenSet



Diesel
10.0 kW 60 Hz
8.0 kW 50 Hz

Commercial GenSet

- Low Vibration for Smooth Operation
- Powerful 18.6 hp Engine
- User-Friendly Remote Control Option
- Cross-Flow Radiator for Increased Cooling Efficiency
- Installation Flexibility with Remountable 90° Exhaust Elbow and Two Oil Fill Locations

Models and Ratings

Model	Fan	Hz	Watts	Voltage	Amps	PF	Phase	Circuit Breaker
10HDKAG/61731	Pusher	60	10,000	120/240	83.3/41.7	1.0	1	2-pole, 45 A
10HDKAG/61730	Suction	60	10,000	120/240	83.3/41.7	1.0	1	2-pole, 45 A
10HDKAG/11322	Pusher	60	10,000	120/240	30.1	0.8	3	3-pole, 35 A
10HDKAG/11323	Suction	60	10,000	120/240	30.1	0.8	3	3-pole, 35 A
10HDKAG/61732	Suction	60	10,000	120/208	34.7	0.8	3	3-pole, 35 A
10HDKAG/61733	Pusher	60	10,000	120/208	34.7	0.8	3	3-pole, 35 A
10HDKAG/11509	Pusher	60	10,000	100/200	100/50	1.0	1	2-pole, 50 A
8HDKAG/11378	Pusher	50	8,000	Recon.*	Recon.*	0.8	3	3-pole, Recon.*
8HDKAG/11379	Suction	50	8,000	Recon.*	Recon.*	0.8	3	3-pole, Recon.*
8HDKAG/11473	Pusher	50	8,000	110/220	72.7/36.4	1.0	1	2-pole, 40 A

*Three-phase models are 12-lead reconnectable for a broad range of voltage applications.

All 60 Hz models operate at 1800 r/min. All 50 Hz models operate at 1500 r/min.

Ratings apply to altitudes up to 500 ft (152.4 m), 85° F (29° C) ambient with No. 2 diesel fuel.

Derating: Power output will decrease 3.5% for each 1000 ft (305 m) above 500 ft (153 m) and 1% for each 10° F (5.5° C) increase in ambient temperature above 85° F (29° C).

Weight, Size and Sound Level

- 520 lb (236 kg)
- **60 Hz (single phase):** Length 39.5 in (1003 mm), Width 21.0 in (533mm), Height 26.0 in (662 mm); 78 dB(A) at 10 ft (3 m) before installation, full load
- **50 Hz (3 phase):** Length 40.5 in (1028 mm), Width 21.0 in (533 mm), Height 26.0 in (662 mm); 76 dB(A) at 10 ft (3 m) before installation, full load



GeneratorJoe

4016 Quartz Drive
Santa Rosa, CA 95405
Phone: 707 539-9003
Fax: 707 539-5212

Email: sales@generatorjoe.NET
Web www.generatorjoe.NET

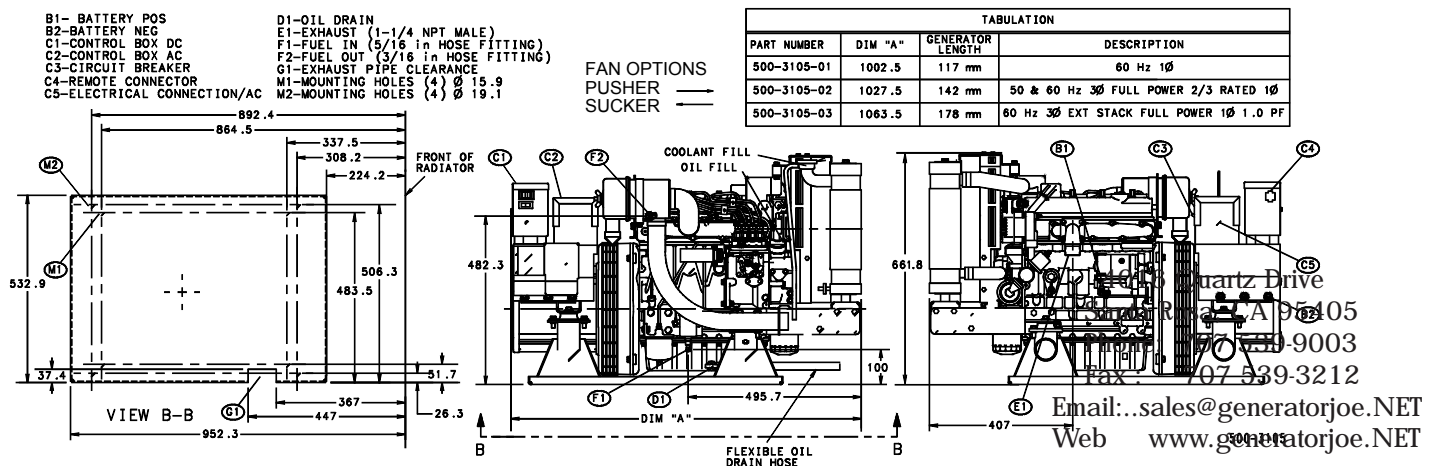
Standard Features

- 4-cylinder diesel engine
- Brush type AC alternator
- Bi-directionally optimized mounting system with 4-point vibration isolation
- Cross-flow radiator
- Full flow lube oil filter
- Fuel filter/water separator
- Vertically mounted fuel and oil filters
- Replaceable element air cleaner
- Remote mountable DC control box
- 4-position exhaust elbow
- 30 A battery charging DC alternator
- Lifting bracket
- Glow plugs for easy starting
- Base pan for drip control
- Electric fuel pump

Accessories

- USDA Forest Service approved spark arrestor muffler (part #155-2262)
- Exhaust resonator (part #155-2653)
- Remote gauge package with start/stop/preheat switch, DC voltage meter, water temperature gauge, oil pressure gauge, running time meter (part #300-5026)
- Remote control panel, switch only (part #300-4939)
- Remote control panel, switch and hourmeter (part #300-4940)
- Remote control panel, switch and DC voltmeter (part #300-4941)
- Remote harness (for use with above panels), 15 ft (part #338-2237), 25 ft (part #338-2238)
- Remote harness pigtail at set (part #338-2102)
- Remote harness pigtail at panel (part #338-3573)
- Battery, 12 V, 660 cold cranking amps at 0°F (-17.8°C) (wet) (part #416-0796)
- Battery, 12 V, 620 cold cranking amps at 0°F (-17.8°C) (dry) (part #416-0823)
- Engine block heater (part #333-0593)
- Coolant overflow recovery kit (part #130-2781)
- Fan conversion kit (pusher to suction) (part #130-4121)
- Fan conversion kit (suction to pusher) (part #130-4556)
- 45 A circuit breaker kit (part #320-1840)
- Auxiliary alternator air cooling kit on suction fan units for compartment-mounted gensets (part #140-3214)

Basic Dimensions



This outline drawing is provided for general reference only and is not intended for design or installation. For more information see installation manual or obtain outline drawing 500-3105 and wiring diagram from your Distributor/Dealer.



GeneratorJoe

4016 Quartz Drive
Santa Rosa, CA 95405
Phone: 707 539-9003
Fax: 707 539-5212
Email: sales@generatorjoe.NET
Web: www.generatorjoe.NET

Engine Detail

Model: Kubota D1305
Design: 4-cycle, liquid-cooled diesel engine
Cylinders: 4, inline vertical
Bore: 2.99 in (76.0 mm)
Stroke: 2.90 in (73.6 mm)
Displacement: 81.4 in³ (1336 cm³)
Compression ratio: 22:1
Lube oil capacity: 5 qt (4.7 L), including filter

Power (max): at 1800 r/min: 18.6 hp
Cooling system capacity: 1.25 Gal (4.73 L)
Starting system: Remote, 12 V
Fuel injection pump: Bosch K mini
Fuel pump: Electric
Combustion chamber: Spherical

Typical fuel consumption

No. 2 diesel fuel, Gal/hr (L/hr)

	No load	Half load	Full load
10HDKAG	0.29 (1.10)	0.55 (2.08)	1.04 (3.90)
8HDKAG	0.26 (0.98)	0.45 (1.71)	0.94 (3.52)

Alternator Detail

Design: Onan, brush type, drip proof construction
Insulation system: Class F, per NEMA MG1-1.65 and BS 2757; insulating varnish conforms to MIL-I-24092, grade CB, Class 155 C
Three-phase models: Broad range reconnectable design for installed voltage flexibility
Exciter system: Electronic voltage regulation

Bearing: Double sealed, pre-lubricated ball bearing
Cooling: Direct drive centrifugal blower
Damper bar system: Generator design (100 V spec unit only) incorporates a damper bar system which results in low harmonic waveform distortion. This design feature becomes significant when powering SCR type loads (converters, etc.)

GenSet Detail

	No load - full load	Constant load
Voltage regulation:	± 2.5%	± 1%
Frequency regulation:	± 2.5%	± 1%

Control

- Unit mounted, drip-proof, vibration isolated console
- DC Controls, 12 V system**
- Start/stop/preheat switch
 - Remote connector for start/stop/preheat switch and gauge package
 - Manual reset fault relay indicating engine shutdown for high coolant temperature, low oil pressure
 - Hourmeter

AC Controls

- Electronic voltage regulator
- Three-phase models, factory shipped reconnectable (no breaker on 50 Hz models)
- Three-phase breaker kits available for field fitted installation



GeneratorJoe

4016 Quartz Drive
Santa Rosa, CA 95405
Phone: 707 539-9003
Fax: 707 539-5212
Email: sales@generatorjoe.NET
Web www.generatorjoe.NET

Warranty Policy

The ONAN limited warranty covers virtually everything except routine maintenance for the first two years you own your generator set, or the first 2,000 hours of operation, whichever comes first. In addition, it includes a free 90-day adjustment policy, which provides that Onan will make minor adjustments to your new genset during the first three months you own it - free of charge!

For complete Onan limited warranty details see your certified Onan Distributor/Dealer.

After Sale Support

EASY TO LOCATE CERTIFIED ONAN SERVICE AND PARTS DEALERS - Onan has the largest and best-trained worldwide certified Distributor/Dealer network in the industry, offering on-time parts and service, and installation assistance. Cummins Onan Distributor/Dealers stock and sell commonly used Onan GenSet maintenance parts, accessories and products, plus operator manuals and literature on current Onan GenSets. They can help you select and install the right genset or accessories on older models, or provide answers to questions on proper operation and maintenance procedures.

MANUALS - Installation and operators manuals are shipped with the genset. To obtain additional copies or other manuals for this model, see your Cummins Onan Distributor/Dealer and request the following part numbers: Operators Manual (981-0149), Parts Manual (981-0252B), Service Manual (981-0516), and Installation Manual (981-0605).

Standards and Testing

Tested at extremes of temperature -20° F to 120° F for starting and operation.

Tested with commercial loads.

Tested in high humidity conditions.

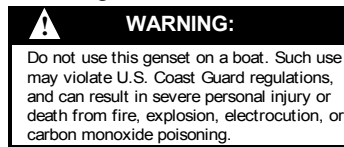
Tested in salt spray conditions.

Tested in heavy air borne dust conditions.

Field Test Program.

This product meets U.S. EPA Tier II.

This generator set was designed and manufactured in facilities certified to ISO 9001.



Contact your Distributor/Dealer for more information:



GeneratorJoe

4016 Quartz Drive

Santa Rosa, CA 95405

Phone: 707 539-9003

Fax: 707 539-5212

Email: sales@generatorjoe.NET

Web www.generatorjoe.NET



Cummins Power Generation is a subsidiary of Cummins Inc. Onan is a registered trademark of Cummins Inc.

WARNING: Backfeed to utility systems can cause electrocution or property damage. Do not connect to building electrical except through approved device and after building main breaker is opened.